

ALLEGAN COUNTY ROAD COMMISSION

124TH AVENUE RECONSTRUCTION PROJECT

15TH STREET EAST 1.24 MILES

HOPKINS & WATSON TOWNSHIPS

UTILITY CONTACTS

ELECTRIC
 CONSUMERS ENERGY
 4000 CLAY AVE, SW
 GRAND RAPIDS, MI 49548
 317-445-8814
 COLE ROCHOVIK
 HAMHSTCIVIMP@cmsenergy.com

TELEPHONE
 AT&T
 269-384-4472
 BRAD DYKENS
 bd1636@att.com

MISS DIG 811

**Board of County Road Commissioners
 Of Allegan County**

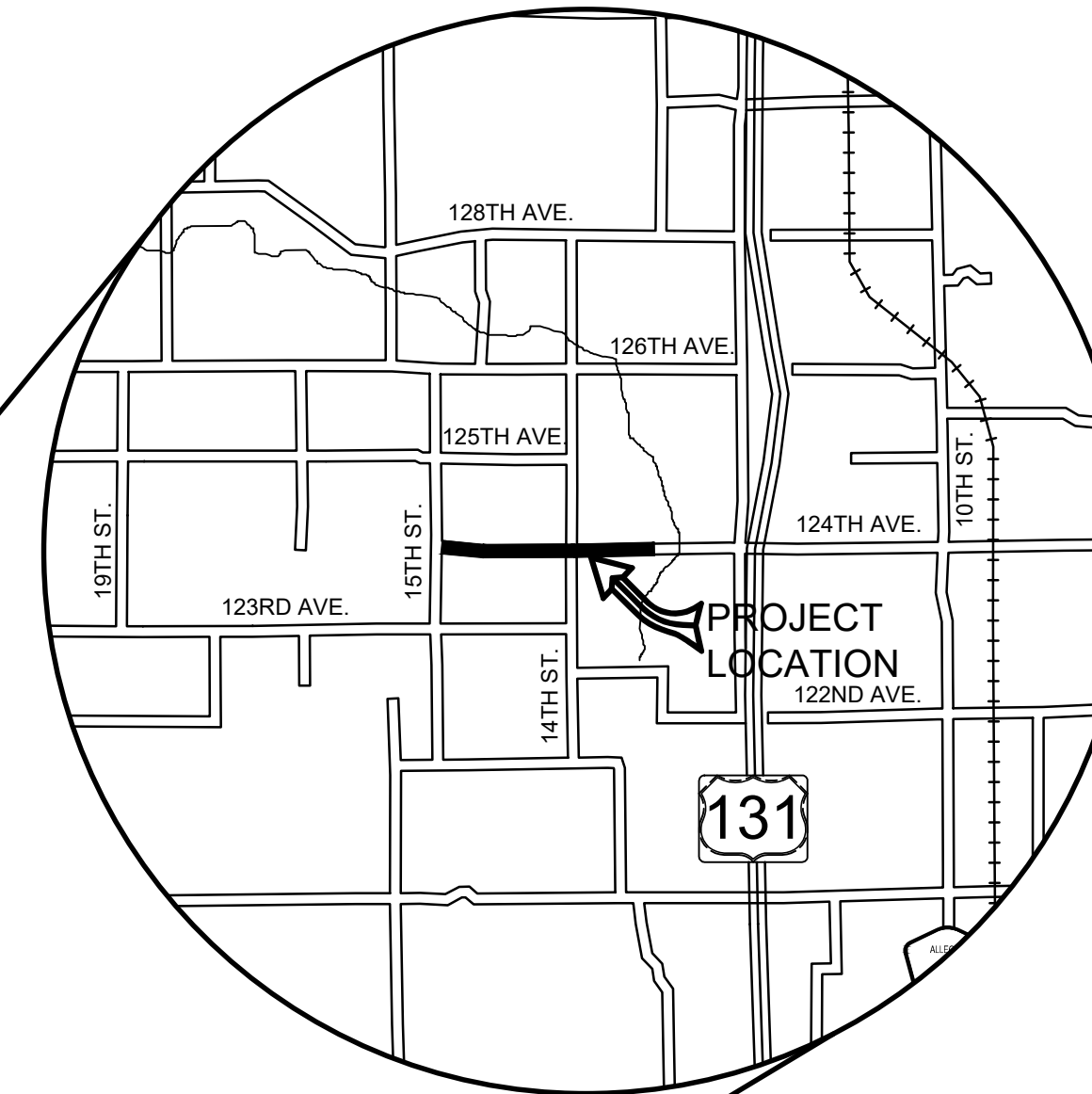
1308 LINCOLN ROAD
 ALLEGAN, MICHIGAN 49010-9762
 TELEPHONE (269) 673-2184 www.alleganroads.org FAX (269) 673-5922

EXCEPT WHERE OTHERWISE INDICATED ON THESE PLANS OR IN THE PROPOSAL AND SUPPLEMENTAL SPECIFICATIONS CONTAINED THEREIN, ALL MATERIALS AND WORKMANSHIP SHALL BE IN ACCORDANCE WITH THE 2020 MICHIGAN DEPARTMENT OF TRANSPORTATION STANDARD SPECIFICATIONS FOR CONSTRUCTION.

THE PLACING OF PAVEMENT MARKINGS AND TRAFFIC CONTROL SIGNS SHALL BE DONE IN ACCORDANCE WITH THE 2011 MICHIGAN MANUAL OF UNIFORM TRAFFIC CONTROL DEVICES AS AMENDED.

THE IMPROVEMENTS COVERED BY THESE PLANS ARE IN ACCORDANCE WITH THE AMERICAN ASSOCIATION OF STATE HIGHWAY AND TRANSPORTATION OFFICIALS, 2011 EDITION, A POLICY ON GEOMETRIC DESIGN OF HIGHWAYS AND STREETS.

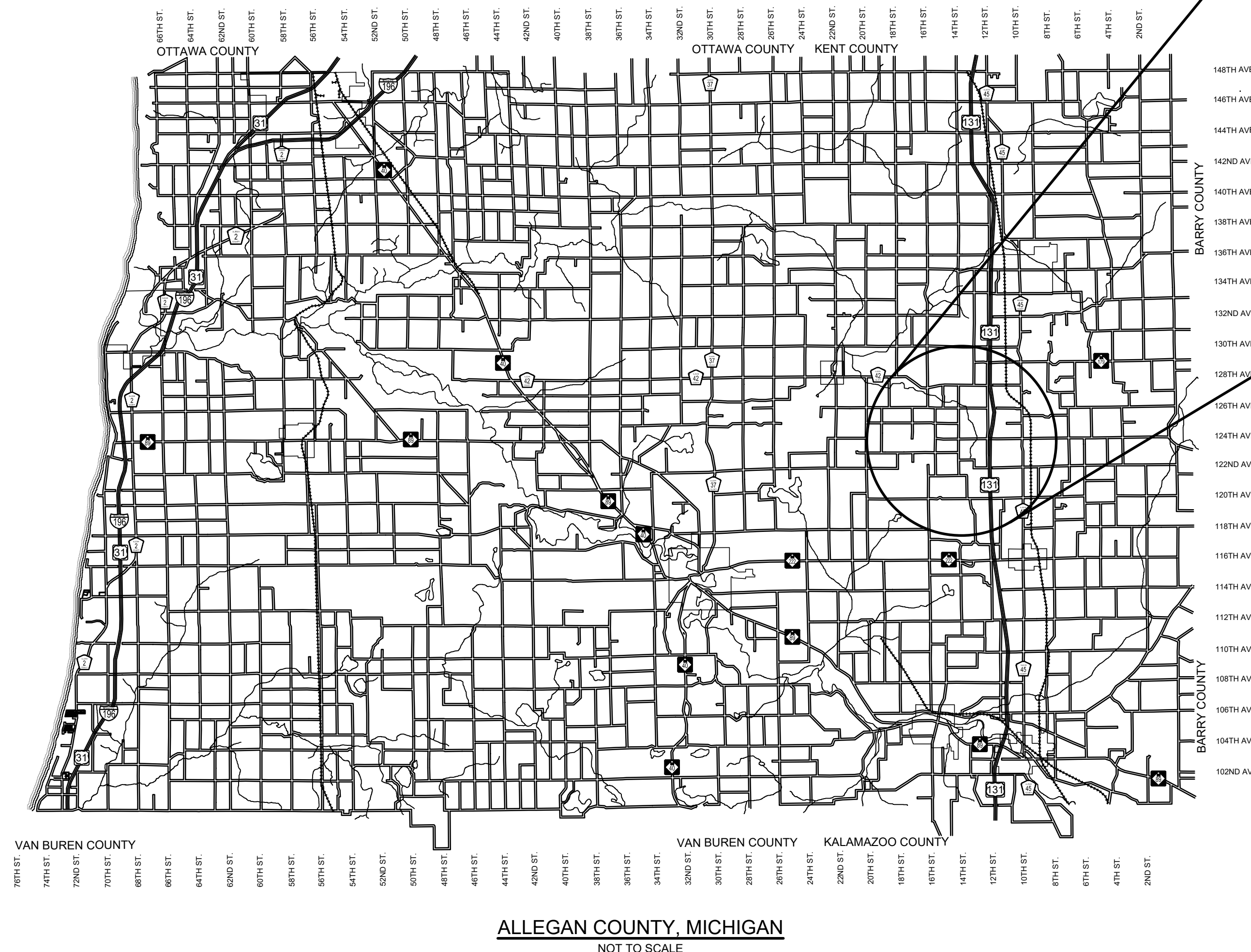
THE CONTRACTOR SHALL DIAL MISS DIG @ 811 FOR PROTECTION OF UNDER GROUND UTILITIES AND IN CONFORMANCE WITH PUBLIC ACT 174 OF 2013 A MINIMUM OF THREE FULL WORKING DAYS, EXCLUDING SATURDAYS, SUNDAYS AND HOLIDAYS PRIOR TO BEGINNING EACH EXCAVATION IN AREAS WHERE PUBLIC UTILITIES HAVE NOT BEEN PREVIOUSLY LOCATED. MEMBERS WILL THUS BE ROUTINELY NOTIFIED. THIS DOES NOT RELIEVE THE CONTRACTOR OF THE RESPONSIBILITY OF NOTIFYING UTILITY OWNERS WHO MAY NOT BE A PART OF THE "MISS DIG" ALERT SYSTEM.



REVISIONS	
1	
2	
3	
4	
5	
6	
7	

INDEX OF PLANS

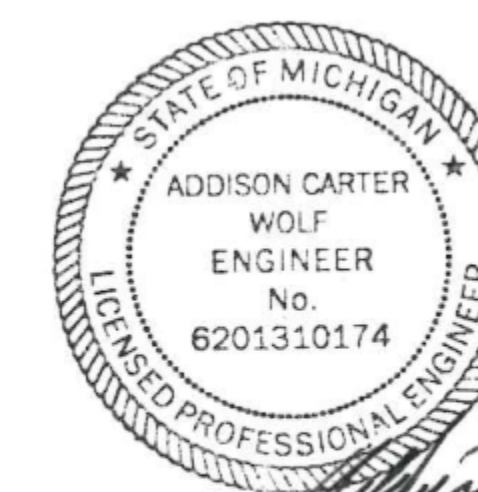
- 1 - COVER SHEET
- 2 - TYPICAL SECTIONS, DETAILS, & NOTES
- 3 - PLAN AND PROFILE - STA. P.O.B. TO STA. 20+00
- 4 - PLAN AND PROFILE - STA. 20+00 TO STA. 30+00
- 5 - PLAN AND PROFILE - STA. 30+00 TO STA. 40+00
- 6 - PLAN AND PROFILE - STA. 40+00 TO STA. 50+00
- 7 - PLAN AND PROFILE - STA. 50+00 TO STA. 60+00
- 8 - PLAN AND PROFILE - STA. 60+00 TO STA. 70+00
- 9 - PLAN AND PROFILE - STA. 70+00 TO STA. P.O.E.
- 10-16 - CROSS SECTIONS
- 17-18 - SOIL EROSION AND SEDIMENTATION CONTROL PLAN



CONTRACT FOR ROAD IMPROVEMENTS

1.24 MILES OF ROADWAY RECONSTRUCTION INCLUDING CLEARING, GRADE ESTABLISHMENT, SAND SUBBASE, AGGREGATE BASE, CULVERT REPLACEMENTS, AND RESTORATION ON 124TH AVENUE FROM 15TH STREET EAST TO THE EXISTING HMA IN HOPKINS & WATSON TOWNSHIPS, ALLEGAN COUNTY.

PREPARED UNDER THE SUPERVISION OF:



Addison Carter Wolf
 03.08.2024

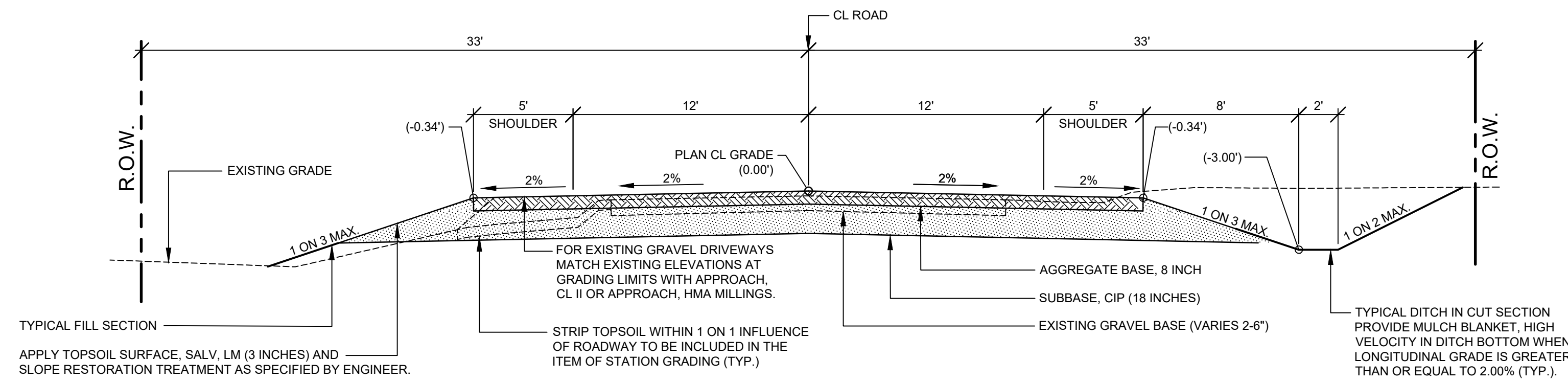
ADDISON C. WOLF
 REGISTERED PROFESSIONAL ENGINEER No. 6201310174

124TH AVENUE RECONSTRUCTION PROJECT
 HOPKINS & WATSON TOWNSHIPS - 15TH STREET EAST 1.24 MILES

COVER SHEET

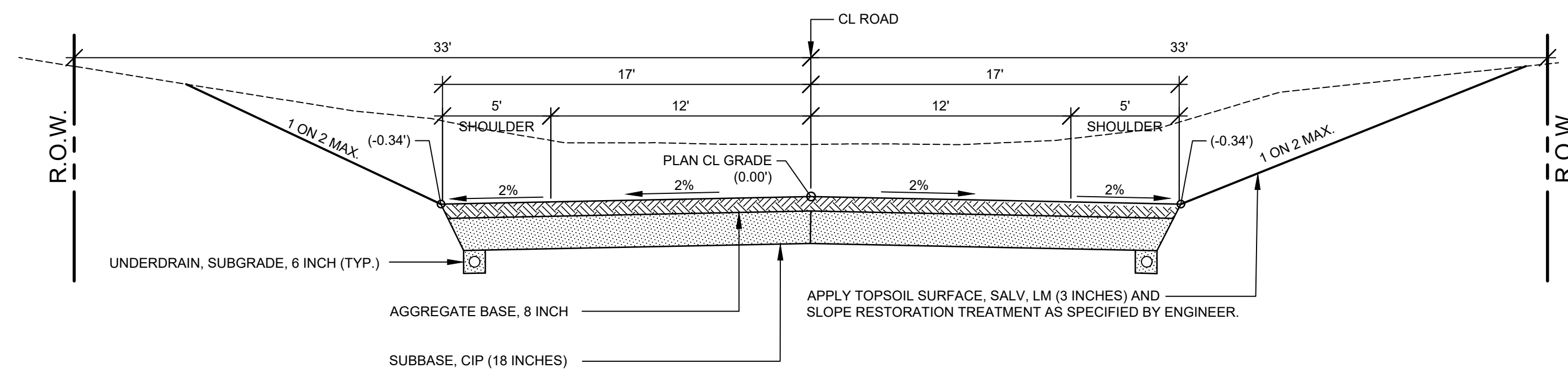
DRAWN BY: ACW
 REVIEWED BY:
 DATE: DECEMBER 2023
 SCALE: NONE

PH 300050 1



TYPICAL SECTION - 124TH AVENUE

SCALE: 1" = 5'
THIS SECTION APPLIES TO:
P.O.B TO P.O.E.



TYPICAL SECTION - VALLEY GUTTER

SCALE: 1" = 5'
THIS SECTION APPLIES TO:
STA. 10+50 TO 12+50 RT
STA. 29+00 TO 31+00 LT & RT
STA. 53+25 TO 58+50 RT
STA. 53+50 TO 58+50 LT

PROJECT NOTES

THE "2020 STANDARD SPECIFICATIONS FOR CONSTRUCTION" AND "STANDARD PLANS" BY THE MICHIGAN DEPARTMENT OF TRANSPORTATION (MDOT) ARE HEREBY INCORPORATED INTO THESE CONTRACT DOCUMENTS. COPIES OF THESE STANDARDS ARE AVAILABLE FOR INSPECTION AT THE OFFICE OF THE ENGINEER.

THE CONTRACTOR WILL BE RESPONSIBLE FOR CONTACTING THE ALLEGAN COUNTY ROAD COMMISSION TO NOTIFY THEM THAT WORK IS COMMENCING.

THE CONTRACTOR SHOULD NOTE THAT STATION GRADING WILL INCLUDE ALL CULVERT REMOVAL, FENCE REMOVAL, FENCE RELOCATION REGARDLESS OF FENCE TYPE, OBLITERATING/PULVERIZING ROADWAY, ROCK EXCAVATION, CONCRETE REMOVAL, HMA REMOVAL, EARTH EXCAVATION, EMBANKMENT, SAW CUTS REQUIRED, AND ALL OTHER OPERATIONS NECESSARY TO DEVELOP THE DESIRED CROSS SECTION. ALL TOPSOIL AND OTHER UNSUITABLE MATERIAL LOCATED BENEATH THE PROPOSED PAVEMENT SECTION WILL BE REMOVED TO THE SUBGRADE ELEVATION AS PART OF STATION GRADING. ALL TOPSOIL REMOVED MAY BE STOCKPILED AND REUSED AS TOPSOIL SURFACE, SALV. LM.

ALL FILL FOR THIS PROJECT MUST BE OBTAINED AND FURNISHED BY THE CONTRACTOR. ALL REQUIRED FILL SHALL BE SELECTED EXCAVATED MATERIAL FROM THE SITE APPROVED BY THE ENGINEER. OR MDOT CLASS II GRANULAR MATERIAL FROM BORROW. EXCESS FILL WILL BE REMOVED FROM SITE BY THE CONTRACTOR. NO BORROW OR SOIL REMOVAL ARRANGEMENTS HAVE BEEN PREARRANGED FOR THIS PROJECT AND WILL BE THE TOTAL RESPONSIBILITY OF THE CONTRACTOR.

THE SOIL BORINGS WERE TAKEN BY GREAT LAKES DRILLING COMPANY, P.O. BOX 51, ALLEGAN, MI 49010 ON DECEMBER 20, 2023. THE TEST BORINGS REPRESENT POINT INFORMATION AND MAY NOT HAVE ENCOUNTERED ALL THE TYPES AND MATERIALS WHICH ARE PRESENT AT THE SITE. THESE BORING LOGS DO NOT CONSTITUTE A GUARANTEE OF THE SOIL OR GROUNDWATER CONDITIONS, OR THAT THE TEST BORINGS ARE AN EXACT REPRESENTATION OF THE SOIL OR GROUNDWATER CONDITIONS AT ALL POINTS ON THE SITE.

SEE PLAN AND PROFILE SHEETS FOR SOIL BORING DATA.

DRIVE REPLACEMENT WILL BE AS SHOWN ON THE PLANS OR AS DIRECTED BY THE ENGINEER IN THE FIELD.

THE ITEM OF SUBBASE, CIP WILL BE PAID FOR AT PLAN QUANTITY EXCEPT IN THE CASE OF A DESIGN CHANGE OR DEMONSTRATED ERROR.

AS PART OF THIS PROJECT THE CONTRACTOR WILL COORDINATE WITH THE ALLEGAN COUNTY ROAD COMMISSION TO PRESERVE AND RESET ALL GOVERNMENT CORNERS WITHIN THE PROJECT LIMITS.

CONTRACTOR WILL RELOCATE ALL MAILBOXES TO A TEMPORARY CENTRAL LOCATION APPROVED BY THE POSTAL SERVICE PRIOR TO CONSTRUCTION. CONTRACTOR SHALL INSTALL A 1" x 3" STAKE WITH THE RESPECTIVE PROPERTY ADDRESS WRITTEN ON IT IN THE FRONT YARD OF EACH RESIDENCE TO ASSIST WITH IDENTIFICATION FOR EMERGENCY VEHICLES. PAYMENT FOR RELOCATION WILL BE INCLUDED IN THE ITEM OF PROJECT CLEANUP. AT THE COMPLETION OF THE PROJECT SAID MAILBOXES SHALL BE RESET AT THEIR APPROPRIATE LOCATIONS.

ALL DISTURBED AREAS NOT TO BE PAVED WILL BE RESTORED WITH TOPSOIL SURFACE, SALV. LM (3 INCHES), MDT SEED MIXTURE TUF (220#/ACRE); SEEDING MIXTURE CR (70 #/ACRE) IN NON LAWN AREAS; FERTILIZER, CHEMICAL NUTRIENT, CL A (176#/ACRE); AND MULCH AND MULCH ANCHORING (2 TON/ACRE) TO BE PAID AS SLOPE RESTORATION, TYPE A. SEE SESC PLAN FOR AREAS TO USE HIGH VELOCITY MULCH BLANKET, TO BE PAID AS SLOPE RESTORATION TYPE C.

ADEQUATE DUST CONTROL MEASURES WILL BE MAINTAINED BY THE CONTRACTOR AS DIRECTED BY THE ENGINEER IN THE FIELD, TO BE INCLUDED IN THE VARIOUS ITEMS OF WORK.

MULCH BLANKET, HIGH VELOCITY WILL BE PLACED ON THE BOTTOM OF ALL DITCHES WHEN THE LONGITUDINAL GRADE IS GREATER THAN OR EQUAL TO 2.00% UNLESS OTHERWISE NOTED, OR AS DIRECTED BY THE ENGINEER IN THE FIELD TO BE PAID AS SLOPE RESTORATION TYPE C.

WHEN FIELD DRAIN TILES ARE ENCOUNTERED IN THE EXISTING DITCHES, THE CONTRACTOR WILL EXTEND THEM AS REQUIRED WITH UNDERDRAIN, SUBGRADE 4" OR 6" AND ADJUST THE DITCH GRADES AS NECESSARY TO PROVIDE POSITIVE DRAINAGE AS DIRECTED BY THE ENGINEER IN THE FIELD. THE COST OF THE CONNECTION WILL BE INCLUDED IN THE NEW PIPE ITEM. IF THE ENGINEER DETERMINES THAT AN EXISTING TILE IS TOO LONG THE CONTRACTOR WILL REMOVE THE TILE AS NECESSARY, TO BE INCLUDED IN THE ITEM OF STATION GRADING.

THE CONTRACTOR IS RESPONSIBLE FOR MAINTAINING EXISTING DRAINAGE PATTERNS, AND WILL RESOLVE ANY DRAINAGE PROBLEMS ON ADJACENT PROPERTIES WHICH MAY RESULT FROM THE CONTRACTOR'S ACTIVITIES.

DATUM REFERS TO NAVD88 DATUM.

DIMENSIONS TAKE PRECEDENCE OVER SCALE. CONTRACTOR TO VERIFY ALL DIMENSIONS IN FIELD.

UTILITY NOTES

FOR PROTECTION OF UNDERGROUND UTILITIES AND IN CONFORMANCE WITH PUBLIC ACT 174 OF 2013, THE CONTRACTOR WILL CONTACT "MISS DIG" AT 811, A MINIMUM OF 72 HOURS, EXCLUDING SATURDAYS, SUNDAYS, AND HOLIDAYS, PRIOR TO BEGINNING EACH EXCAVATION IN AREAS WHERE PUBLIC UTILITIES HAVE NOT BEEN PREVIOUSLY LOCATED. MEMBERS WILL BE ROUTINELY NOTIFIED. THIS DOES NOT RELIEVE THE CONTRACTOR OF THE RESPONSIBILITY OF NOTIFYING UTILITY OWNERS WHO MAY NOT BE A PART OF THE "MISS DIG" ALERT SYSTEM.

THE CONTRACTOR WILL LOCATE ALL ACTIVE UNDERGROUND UTILITIES PRIOR TO STARTING WORK AND WILL CONDUCT HIS OPERATIONS IN A MANNER AS TO ENSURE THAT THOSE UTILITIES NOT REQUIRING RELOCATION WILL NOT BE DISTURBED.

PRELIMINARY UTILITY COORDINATION WAS PERFORMED AND ALL UTILITIES HAVE VERIFIED LOCATIONS.

MISCELLANEOUS QUANTITIES

DESCRIPTION	QUANTITY	UNIT
SUBGRADE UNDERCUTTING, TYPE II	1500	CYD
AGGREGATE, 6A	50	TON
GEOTEXTILE, STABILIZATION	3000	SYD
CULV END SECT, CONC, 18 INCH	2	EA
CULV, CL E, CONC, 18 INCH	48	FT
RIPRAP, PLAIN	50	SYD
EROSION CONTROL, SILT FENCE	1500	FT
EROSION CONTROL, CHECK DAM	150	FT
APPROACH, CL II	100	TON
APPROACH, HMA MILLINGS	50	TON
CULV, CL F, 12 INCH	80	FT
CULV, CL F, 18 INCH	40	FT

**Board of County Road Commissioners
Of Allegan County**

1308 LINCOLN ROAD
ALLEGAN, MICHIGAN 49010-9762
www.alleganroads.org
TELEPHONE (269) 673-2184 FAX (269) 673-5922

REVISIONS	
1	
2	
3	
4	
5	
6	
7	

124TH AVENUE RECONSTRUCTION PROJECT
HOPKINS & WATSON TOWNSHIPS - 15TH STREET EAST 1.24 MILES

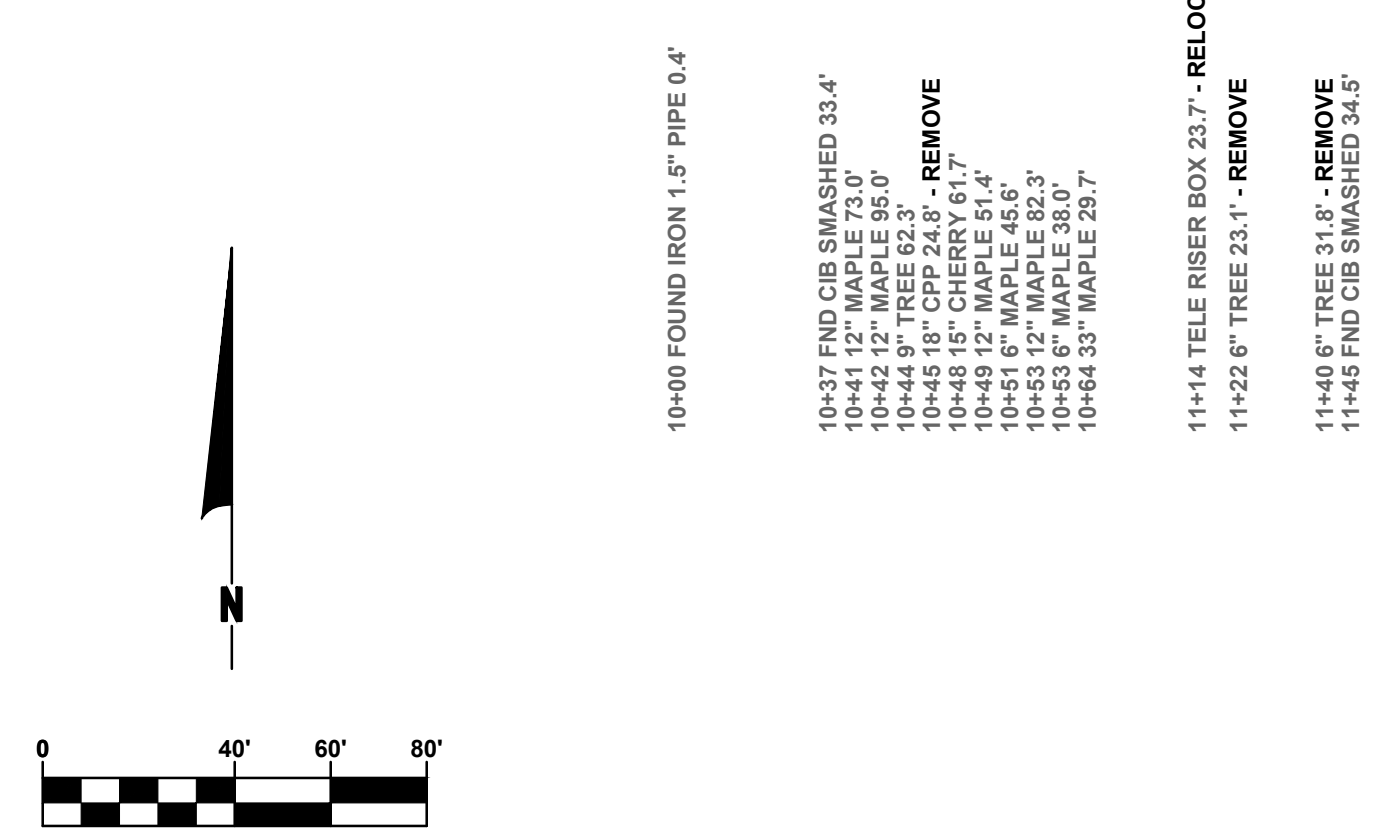
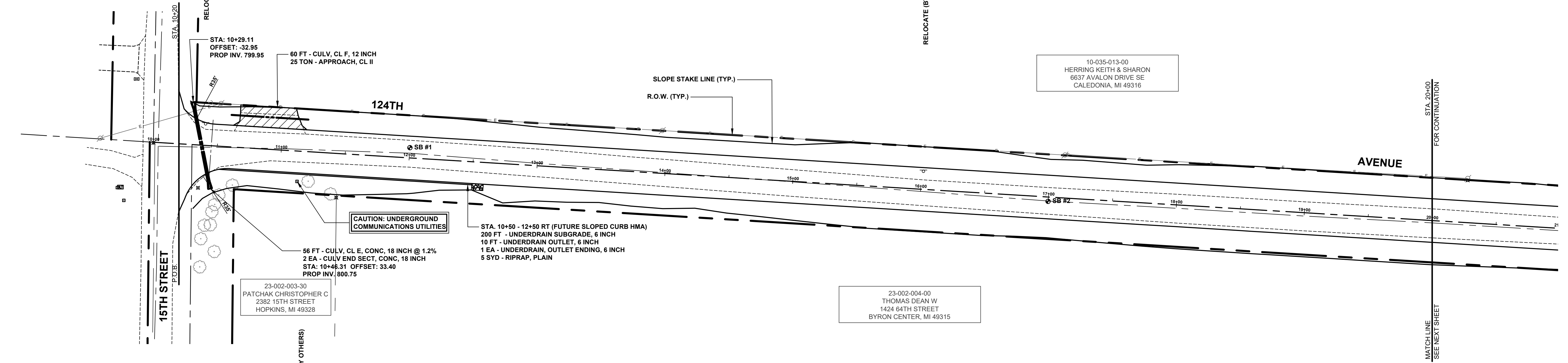
TYPICAL SECTIONS, DETAILS, & NOTES

DRAWN BY: ACW
REVIEWED BY:
DATE: FEBRUARY 2024
SCALE: AS NOTED

PH 300050 2

SOIL BORINGS

SB #1	0 - 5"	BROWN MEDIUM SAND, SOME FINE TO COARSE GRAVEL
	5" - 60"	BROWN SANDY CLAY, TRACE FINE GRAVEL
	60"	END OF BORING
SB #2	0 - 10"	BROWN MEDIUM SAND & FINE TO COARSE GRAVEL
	10" - 22"	DARK BROWN CLAYEY MEDIUM SAND, SOME FINE TO COARSE GRAVEL
	22" - 60"	DARK BROWN SANDY CLAY
	60"	END OF BORING

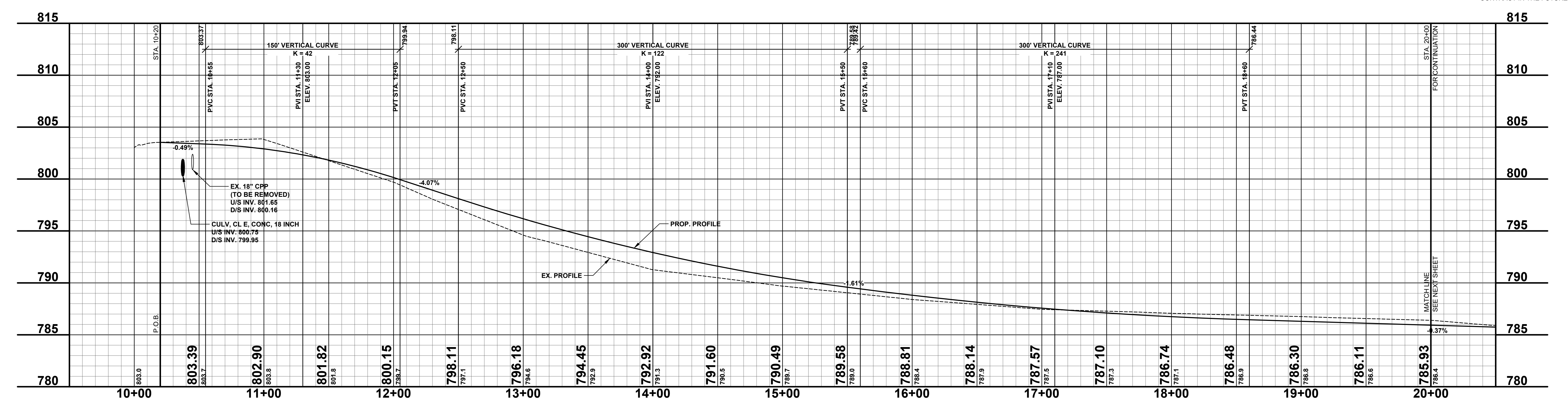


LEGEND

- REGRADE EXISTING DRIVE AS REQUIRED AND SURFACE WITH APPROACH, CLASS II TO A DEPTH OF 6". AS DIRECTED BY THE ENGINEER IN THE FIELD, PAID FOR AS APPROACH, CL II BY THE TON.
- SAWCUT AND REMOVE EXISTING HMA PAVEMENT, REGRADE EXISTING DRIVE OR APPROACH AS REQUIRED AND SURFACE WITH APPROACH, CL II; 165#/SYD HMA, 4EL (LEVELING); AND 165#/SYD HMA, 4EL (TOP). (PAVING UNDER SEPARATE CONTRACT IN THE FUTURE)
- SAWCUT AND REMOVE EXISTING CONCRETE PAVEMENT, REGRADE EXISTING DRIVE AS REQUIRED AND SURFACE WITH APPROACH, CL II; 165#/SYD HMA, 4EL (LEVELING); AND 165#/SYD HMA, 4EL (TOP). (PAVING UNDER SEPARATE CONTRACT IN THE FUTURE)

REVISIONS

1	
2	
3	
4	
5	
6	
7	



124TH AVENUE RECONSTRUCTION PROJECT
 HOPKINS & WATSON TOWNSHIPS - 15TH STREET EAST 1.24 MILES

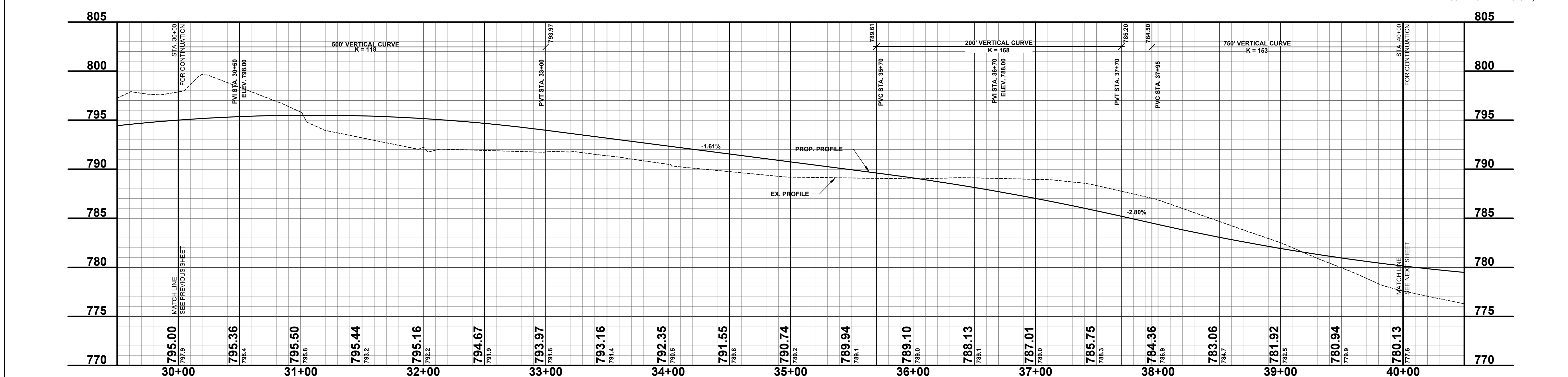
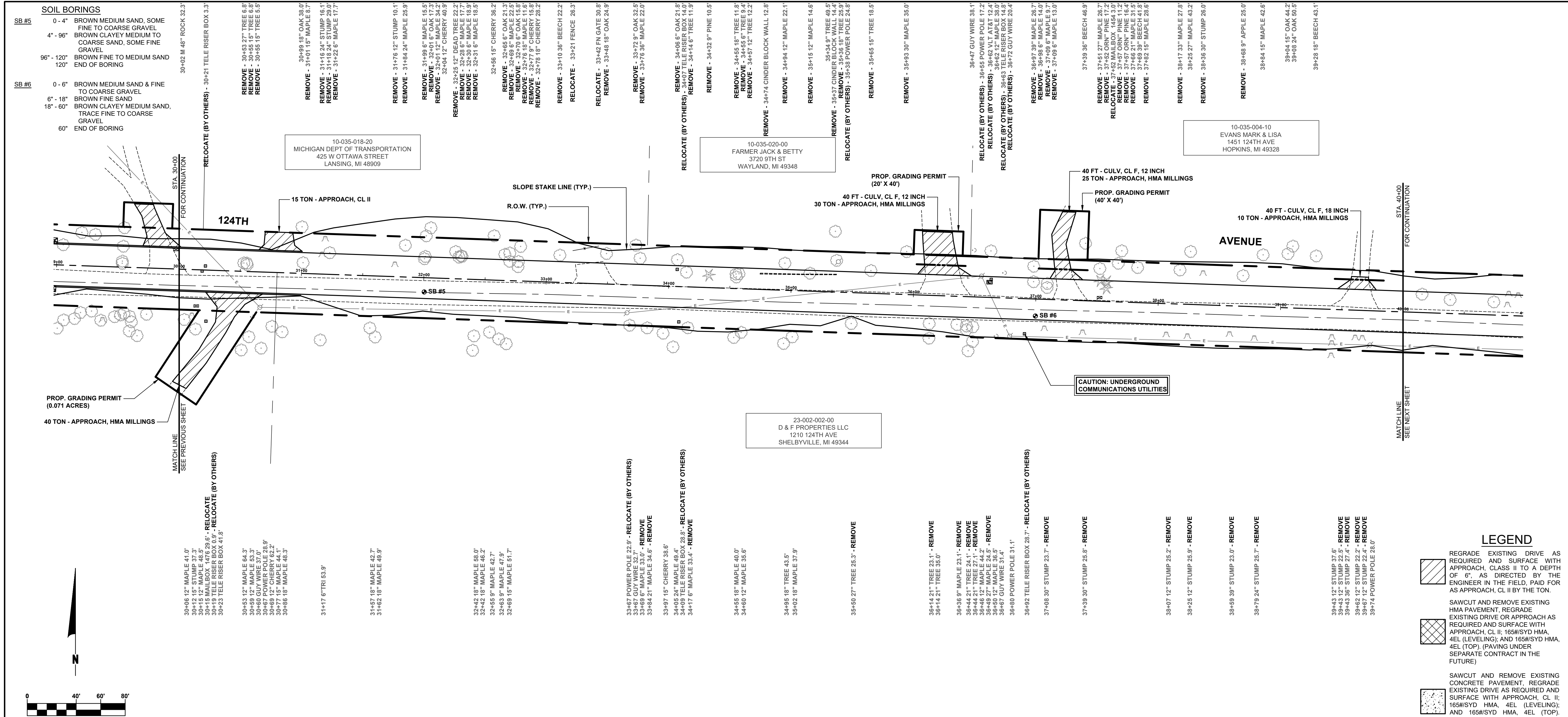
PLAN & PROFILE - STA. P.O.B. TO STA. 20+00

DRAWN BY: ACW
 REVIEWED BY:
 DATE: JANUARY 2024
 SCALE: 1" = 40'H, 5V

PH 300050 3

**Board of County Road Commissioners
 Of Allegan County**

1308 LINCOLN ROAD
 ALLEGAN, MICHIGAN 49010-9762
 TELEPHONE (269) 673-2184 www.alleganroads.org FAX (269) 673-5922



**Board of County Road Commissioners
Of Allegan County**

1308 LINCOLN ROAD
ALLEGAN, MICHIGAN 49010-9762
www.alleganroads.org
TELEPHONE (269) 673-2184 FAX (269) 673-5922

REVISIONS

NO.	DESCRIPTION
1	
2	
3	
4	
5	
6	
7	

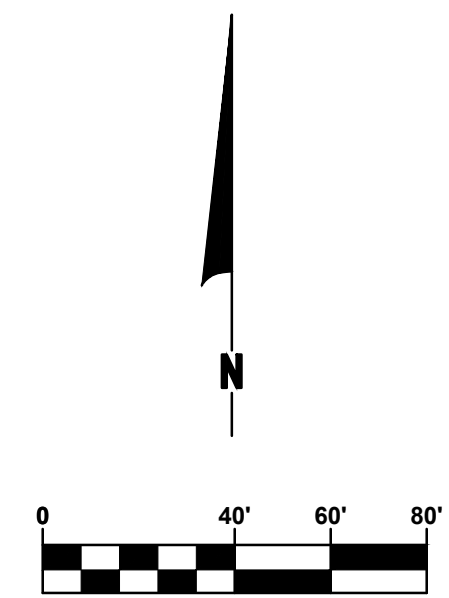
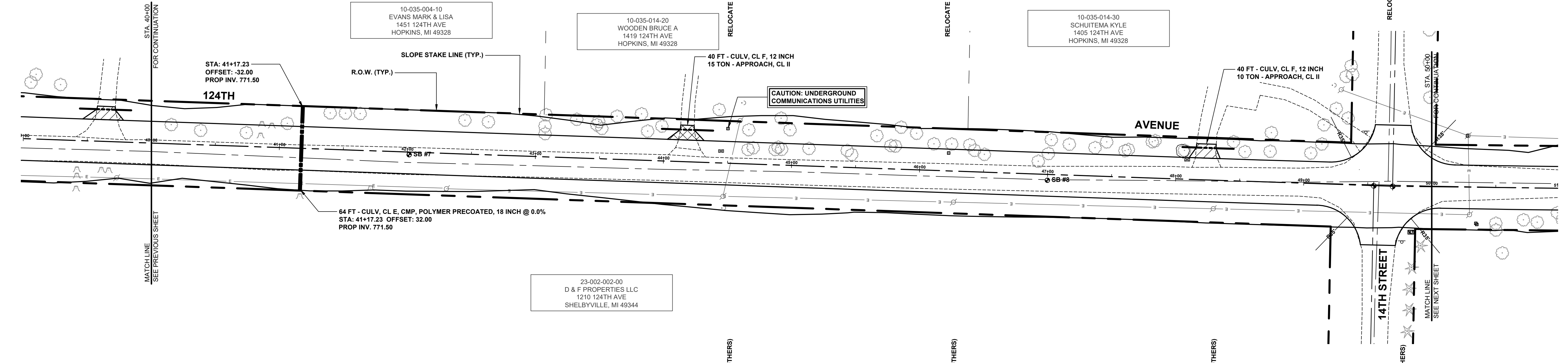
124TH AVENUE RECONSTRUCTION PROJECT
HOPKINS & WATSON TOWNSHIPS - 15TH STREET EAST 1.24 MILES

PLAN & PROFILE - STA. 30+00 TO STA. 40+00

DRAWN BY: ACW
REVIEWED BY:
DATE: JANUARY 2024
SCALE: 1"=40', 5V

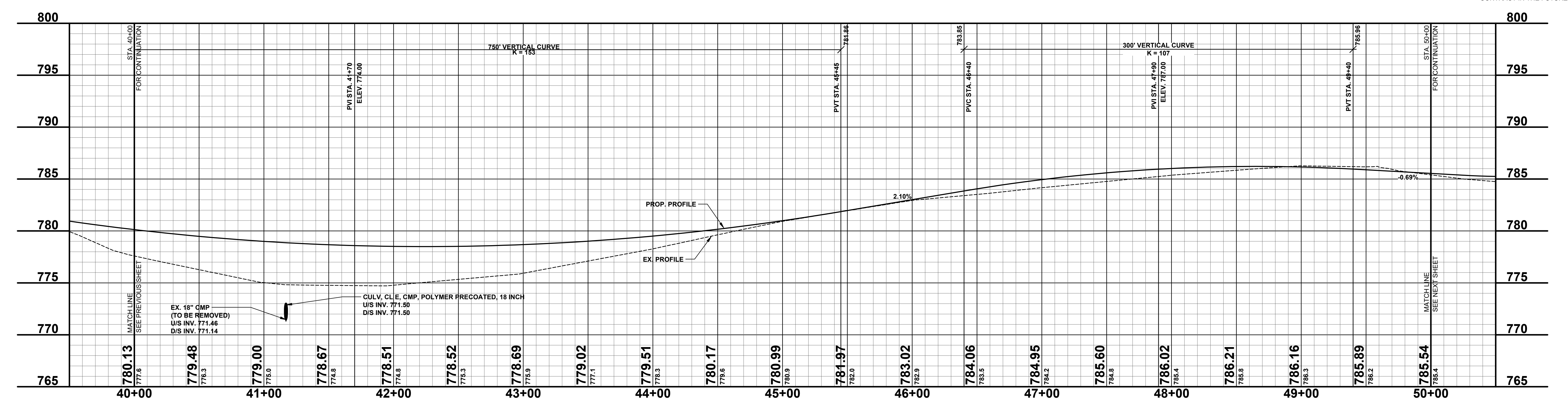
SOIL BORINGS

SB #7	0 - 7"	BROWN MEDIUM SAND & FINE TO COARSE GRAVEL
	7" - 66"	BROWN SANDY CLAY, TRACE FINE GRAVEL, VERY STIFF
	66" - 120"	GRAY SANDY CLAY, MOIST TO WET
	120"	END OF BORING
SB #8	0 - 4"	BROWN MEDIUM SAND, SOME FINE TO COARSE GRAVEL
	4" - 20"	DARK BROWN CLAYEY FINE TO MEDIUM SAND
	20" - 36"	BROWN SANDY CLAY
	36" - 60"	BROWN SILTY FINE SAND
	60"	END OF BORING



LEGEND

	REGRADE EXISTING DRIVE AS REQUIRED AND SURFACE WITH APPROACH, CLASS II TO A DEPTH OF 6". AS DIRECTED BY THE ENGINEER IN THE FIELD, PAID FOR AS APPROACH, CL II BY THE TON.
	SAW/CUT AND REMOVE EXISTING HMA PAVEMENT, REGRADE EXISTING DRIVE OR APPROACH AS REQUIRED AND SURFACE WITH APPROACH, CL II; 165#/SYD HMA, 4EL (LEVELING); AND 165#/SYD HMA, 4EL (TOP). (PAVING UNDER SEPARATE CONTRACT IN THE FUTURE)
	SAW/CUT AND REMOVE EXISTING CONCRETE PAVEMENT, REGRADE EXISTING DRIVE AS REQUIRED AND SURFACE WITH APPROACH, CL II; 165#/SYD HMA, 4EL (LEVELING); AND 165#/SYD HMA, 4EL (TOP). (PAVING UNDER SEPARATE CONTRACT IN THE FUTURE)



**Board of County Road Commissioners
Of Allegan County**
1308 LINCOLN ROAD
ALLEGAN, MICHIGAN 49010-9762
TELEPHONE (269) 673-2184 www.alleganroads.org FAX (269) 673-5922

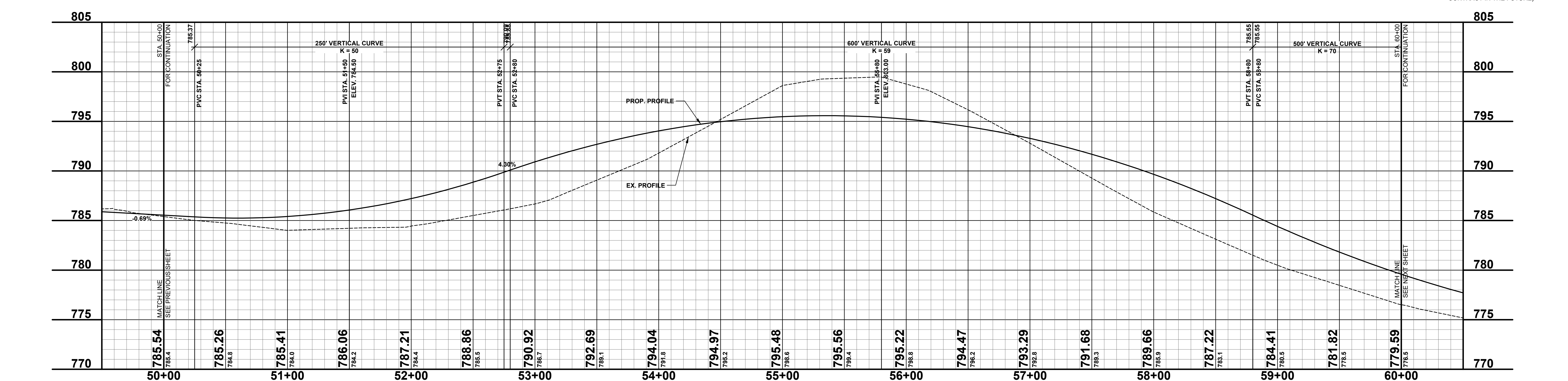
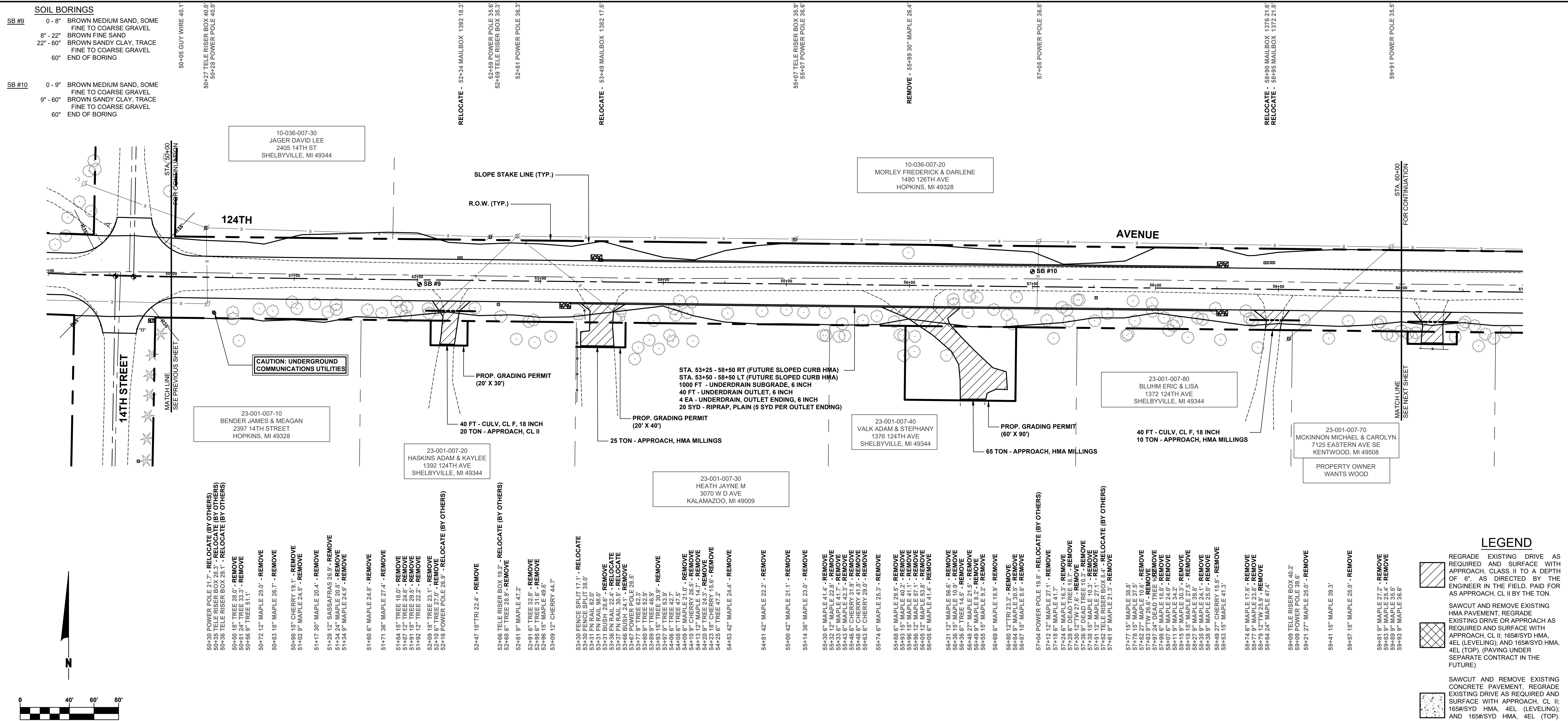
REVISIONS

1	
2	
3	
4	
5	
6	
7	

124TH AVENUE RECONSTRUCTION PROJECT
HOPKINS & WATSON TOWNSHIPS - 15TH STREET EAST 1.24 MILES
PLAN & PROFILE - STA. 40+00 TO STA. 50+00

DRAWN BY: ACW
REVIEWED BY:
DATE: JANUARY 2024
SCALE: 1"= 40'H, 5V

PH 300050 6



**Board of County Road Commissioners
Of Allegan County**

1308 LINCOLN ROAD
ALLEGAN, MICHIGAN 49010-9762
TELEPHONE (269) 673-2184 www.alleganroads.org FAX (269) 673-5922

REVISIONS	
1	
2	
3	
4	
5	
6	
7	

124TH AVENUE RECONSTRUCTION PROJECT
HOPKINS & WATSON TOWNSHIPS - 15TH STREET EAST 1.24 MILES

PLAN & PROFILE - STA. 50+00 TO STA. 60+00

DRAWN BY: ACW
REVIEWED BY:
DATE: JANUARY 2024
SCALE: 1" = 40'H, 5'V

PH 300050 7

SOIL BORINGS

SB #13	0 - 1"	BROWN MEDIUM SAND, A LITTLE FINE GRAVEL
	1" - 21"	DARK BROWN SILTY FINE SAND, TRACE TOPSOIL
	21" - 30"	BROWN FINE SAND
	30" - 60"	BROWN SILTY, SANDY CLAY
	60"	END OF BORING

RELOCATE - 70+37 MAILBOX 1309 16.0'

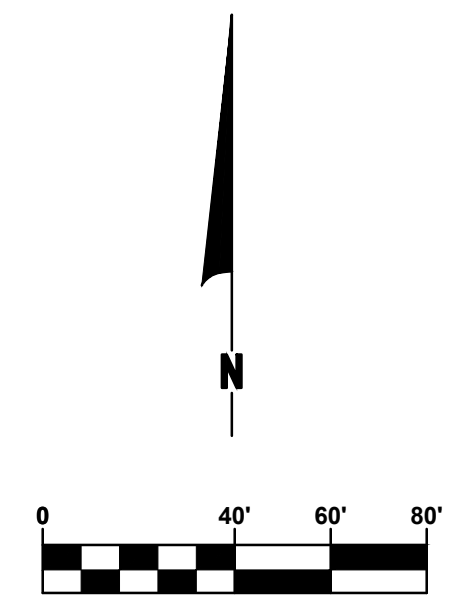
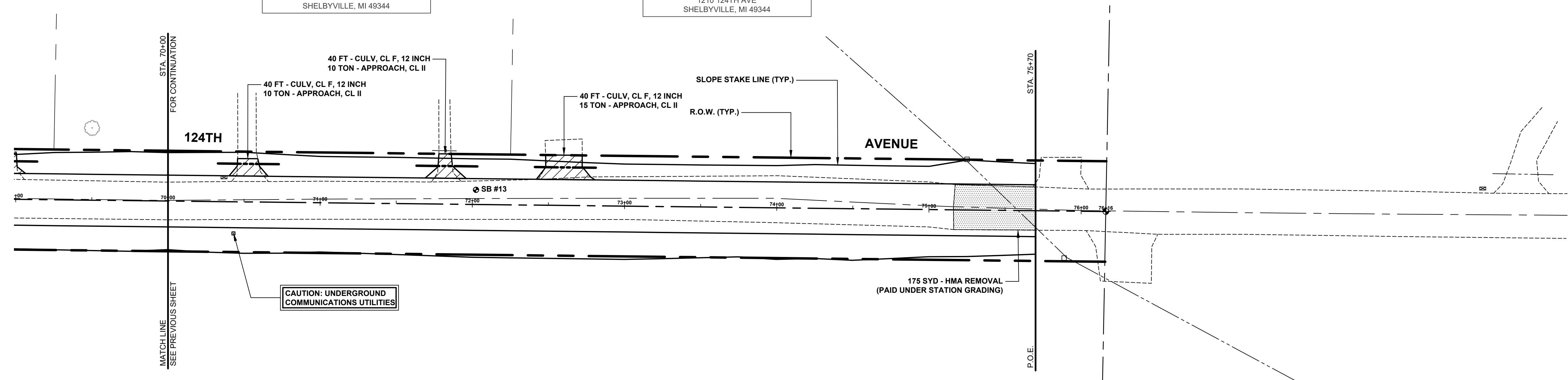
10-036-006-00
WOOTEN JEFFREY & LAURA
1309 124TH AVE
SHELBYVILLE, MI 49344

10-036-005-00
D & F PROPERTIES LLC
1210 124TH AVE
SHELBYVILLE, MI 49344

23-001-005-00
D & F PROPERTIES LLC
1210 124TH AVE
SHELBYVILLE, MI 49344

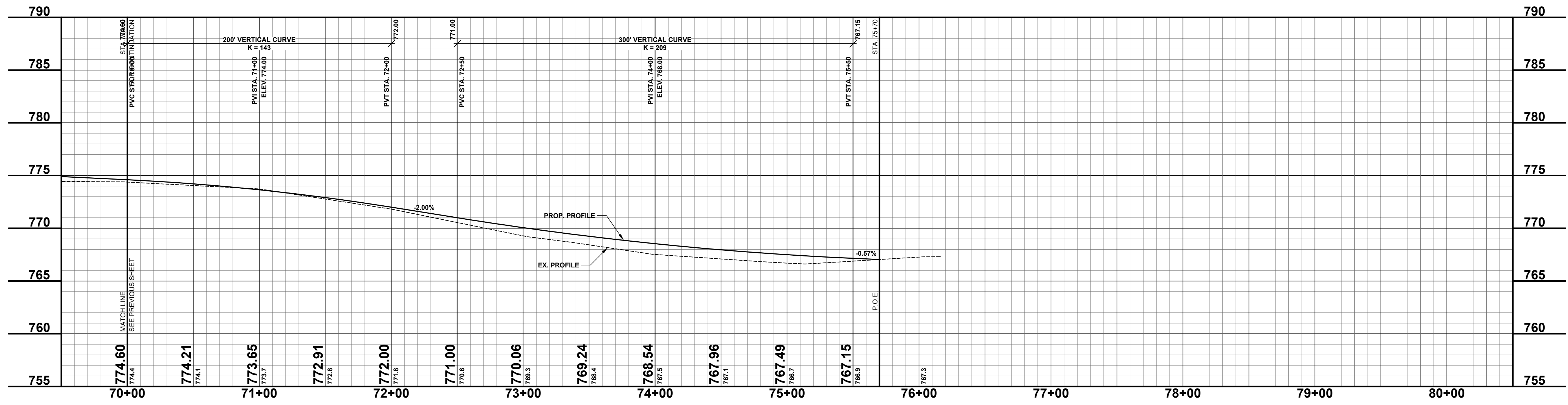
75+23 42" CULVERT 30.8'
75+24 CB BEEHIVE 30.2'
75+25 12" CULVERT 32.0'

75+89 CB BEEHIVE 30.5'
75+90 12" CULVERT 30.2'



LEGEND

	REGRADE EXISTING DRIVE AS REQUIRED AND SURFACE WITH APPROACH, CLASS II TO A DEPTH OF 6". AS DIRECTED BY THE ENGINEER IN THE FIELD, PAID FOR AS APPROACH, CL II BY THE TON.
	SAWCUT AND REMOVE EXISTING HMA PAVEMENT, REGRADE EXISTING DRIVE OR APPROACH AS REQUIRED AND SURFACE WITH APPROACH, CL II; 165#/SYD HMA, 4EL (LEVELING); AND 165#/SYD HMA, 4EL (TOP). (PAVING UNDER SEPARATE CONTRACT IN THE FUTURE)
	SAWCUT AND REMOVE EXISTING CONCRETE PAVEMENT, REGRADE EXISTING DRIVE AS REQUIRED AND SURFACE WITH APPROACH, CL II; 165#/SYD HMA, 4EL (LEVELING); AND 165#/SYD HMA, 4EL (TOP). (PAVING UNDER SEPARATE CONTRACT IN THE FUTURE)



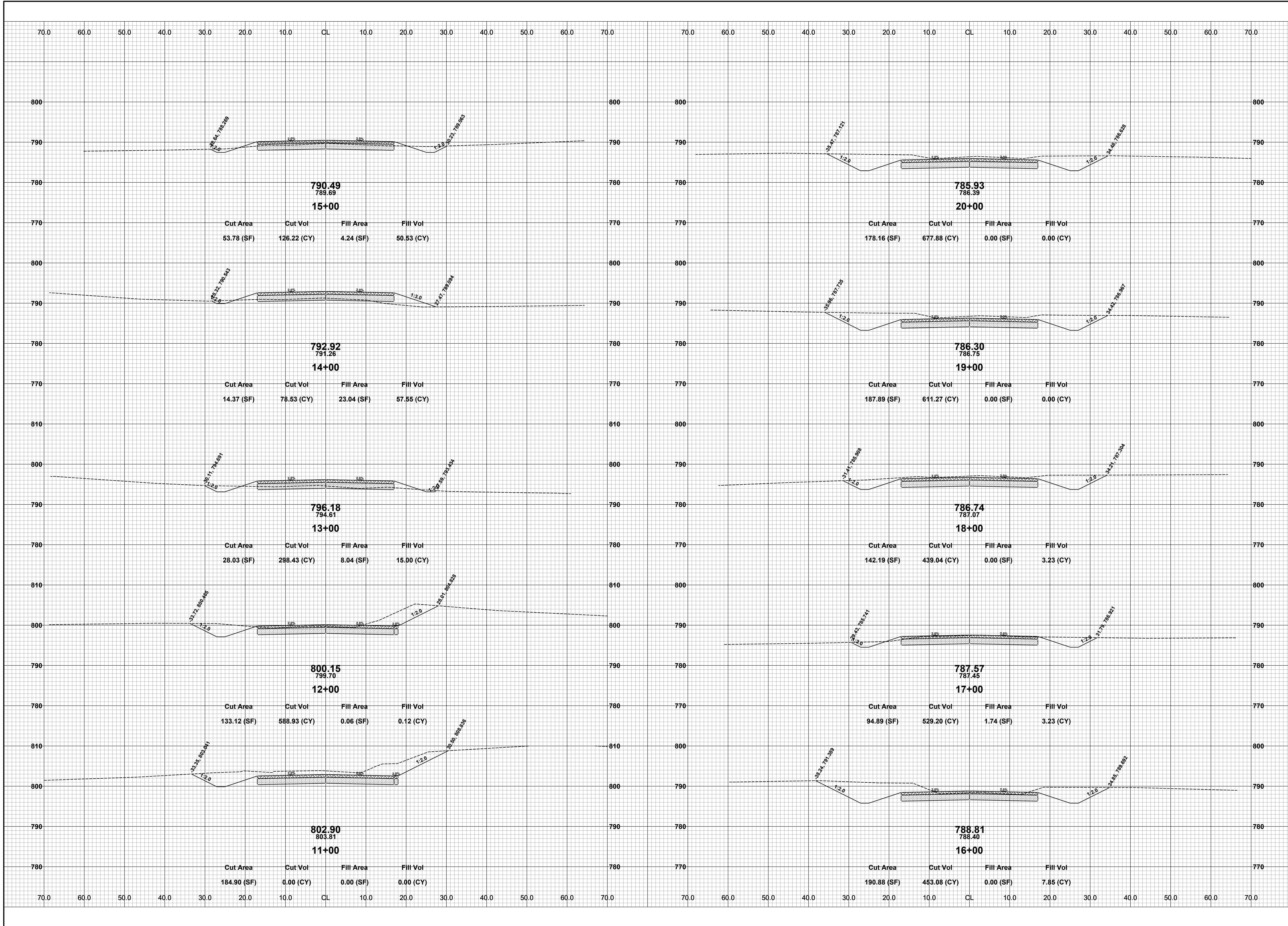
**Board of County Road Commissioners
Of Allegan County**
1308 LINCOLN ROAD
ALLEGAN, MICHIGAN 49010-9762
www.alleganroads.org
TELEPHONE (269) 673-2184 FAX (269) 673-5922

REVISIONS

1	
2	
3	
4	
5	
6	
7	

124TH AVENUE RECONSTRUCTION PROJECT
HOPKINS & WATSON TOWNSHIPS - 15TH STREET EAST 1.24 MILES
PLAN & PROFILE - STA. 70+00 TO STA. P.O.E.

DRAWN BY: ACW
REVIEWED BY:
DATE: JANUARY 2024
SCALE: 1"= 40'H, 5V

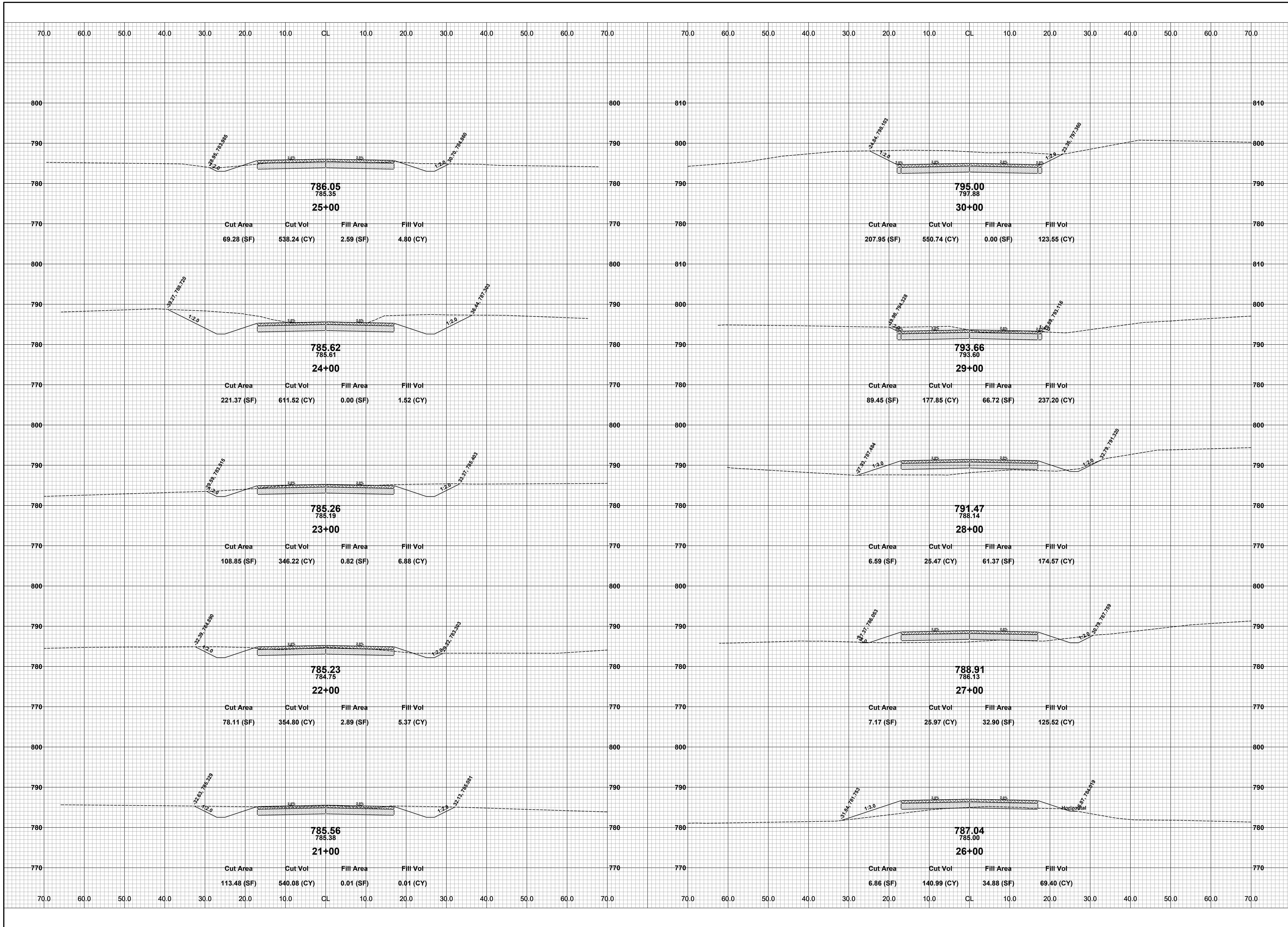


**Board of County Road Commissioners
Of Allegheny County**
1308 LINCOLN ROAD
ALLEGANY, MICHIGAN 49010-9762
www.alleghenroads.org FAX (269) 673-5922
TELEPHONE (269) 673-2184

REVISIONS	
1	
2	
3	
4	
5	
6	
7	

124TH AVENUE RECONSTRUCTION PROJECT
HOPKINS & WATSON TOWNSHIPS - 15TH STREET EAST 1.24 MILES
CROSS SECTIONS - STA. 11+00 TO STA. 20+00

DRAWN BY: ACW
REVIEWED BY:
DATE: DECEMBER 2023
SCALE: 1"= 10'

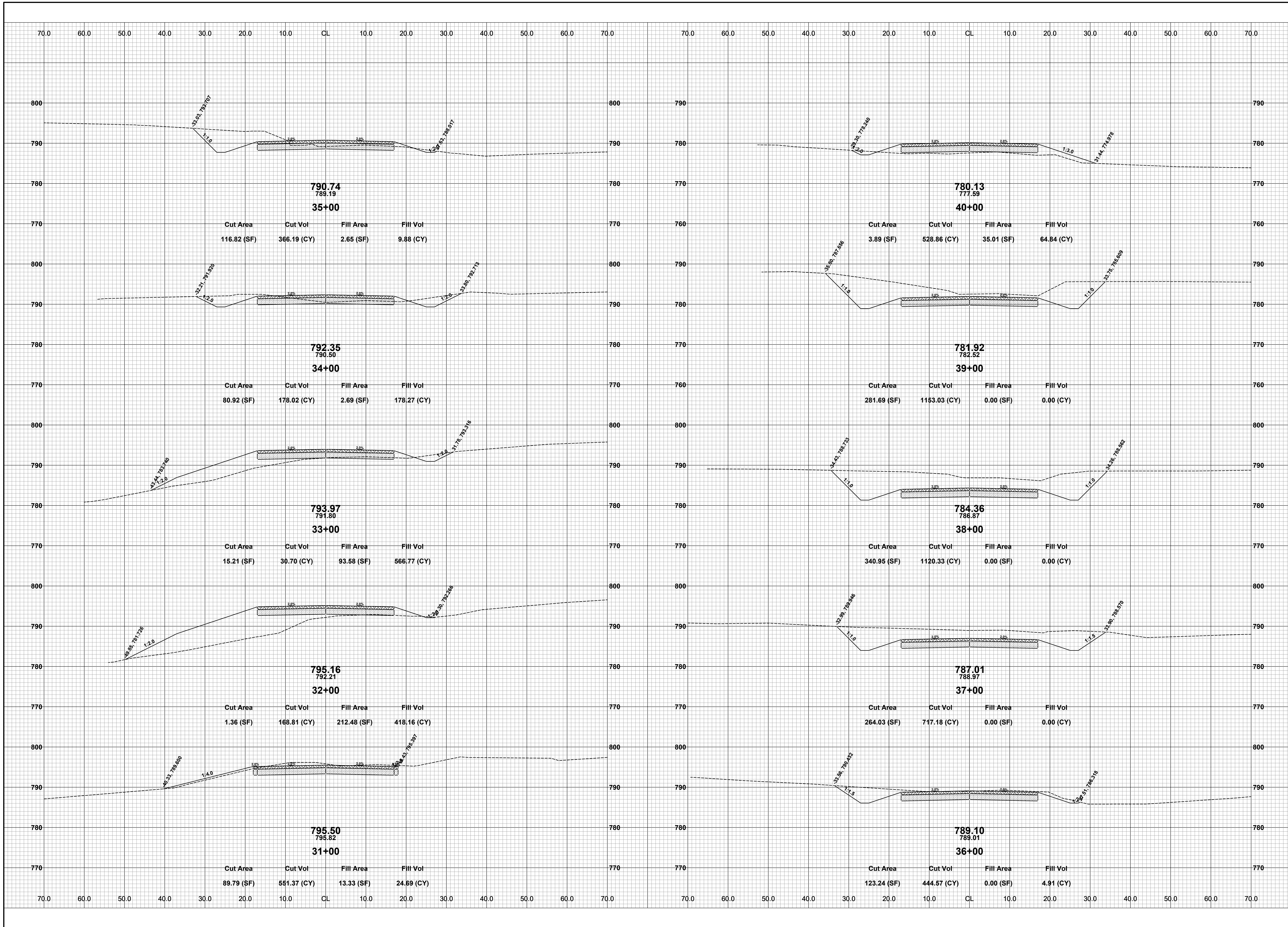


**Board of County Road Commissioners
 Of Allegan County**
 1308 LINCOLN ROAD
 ALLEGAN, MICHIGAN 49010-9762
 www.alleganroads.org FAX (269) 673-5922
 TELEPHONE (269) 673-2184

REVISIONS	
1	
2	
3	
4	
5	
6	
7	

124TH AVENUE RECONSTRUCTION PROJECT
 HOPKINS & WATSON TOWNSHIPS - 15TH STREET EAST 1.24 MILES
 CROSS SECTIONS - STA. 21+00 TO STA. 30+00

DRAWN BY: ACW
 REVIEWED BY:
 DATE: DECEMBER 2023
 SCALE: 1"= 10'



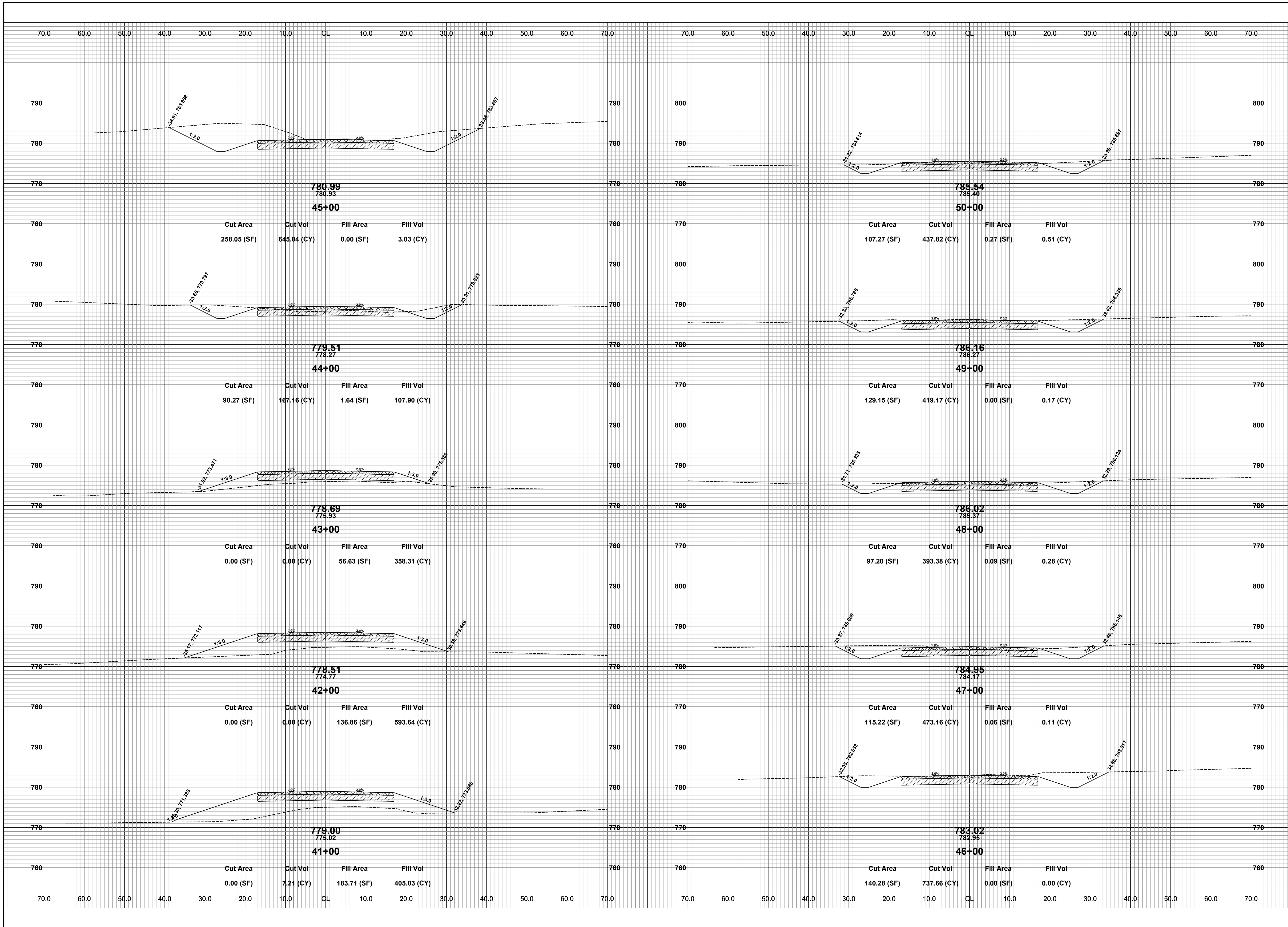
**Board of County Road Commissioners
Of Allegan County**
1308 LINCOLN ROAD
ALLEGAN, MICHIGAN 49010-9762
www.alleganroads.org
TELEPHONE (269) 673-2184 FAX (269) 673-5922

REVISIONS

1	
2	
3	
4	
5	
6	
7	

124TH AVENUE RECONSTRUCTION PROJECT
HOPKINS & WATSON TOWNSHIPS - 15TH STREET EAST 1.24 MILES
CROSS SECTIONS - STA. 31+00 TO STA. 40+00

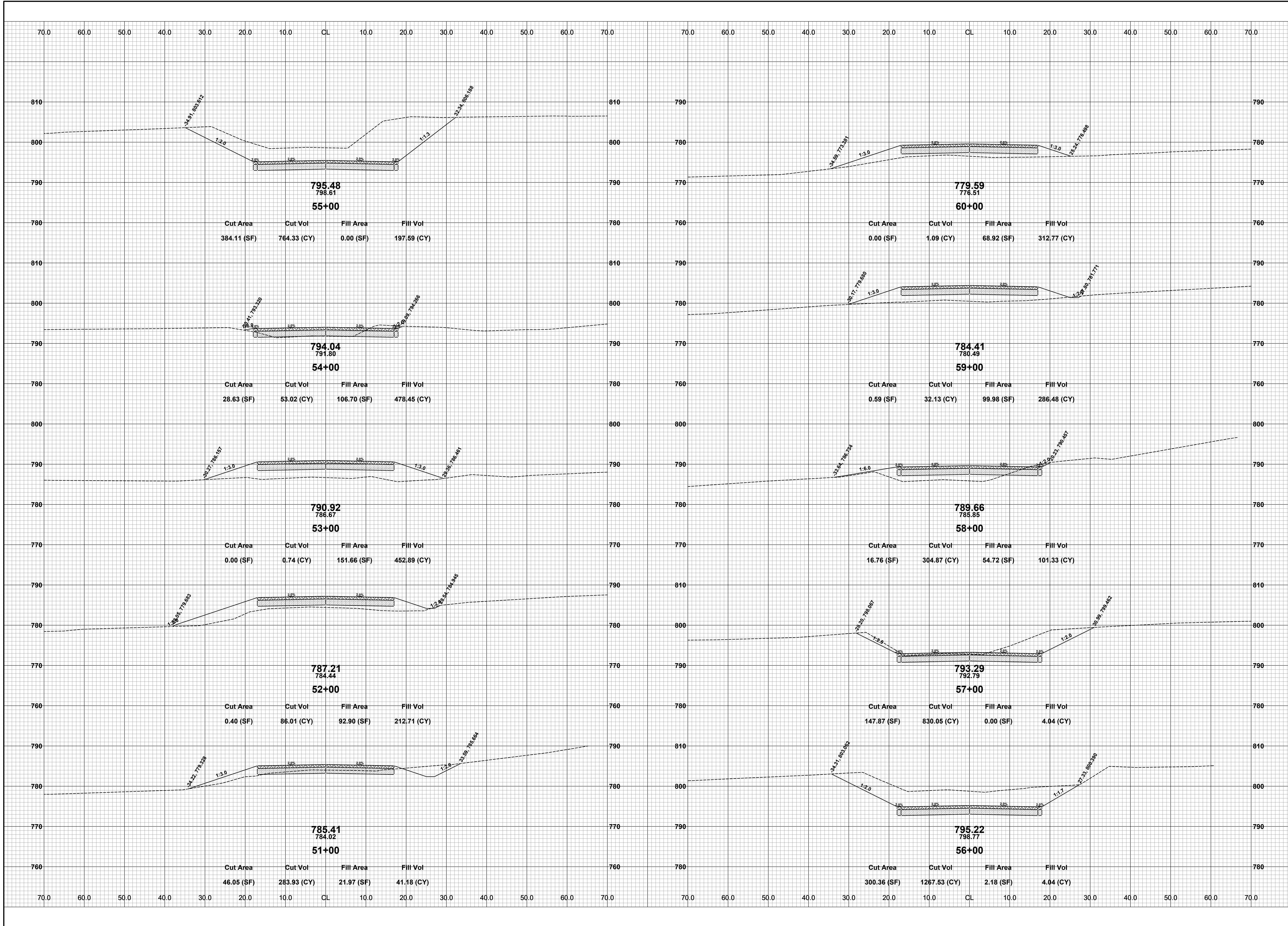
DRAWN BY: ACW
REVIEWED BY:
DATE: DECEMBER 2023
SCALE: 1" = 10'



REVISIONS	
1	
2	
3	
4	
5	
6	
7	

124TH AVENUE RECONSTRUCTION PROJECT
 HOPKINS & WATSON TOWNSHIPS - 15TH STREET EAST 1.24 MILES
 CROSS SECTIONS - STA. 41+00 TO STA. 50+00

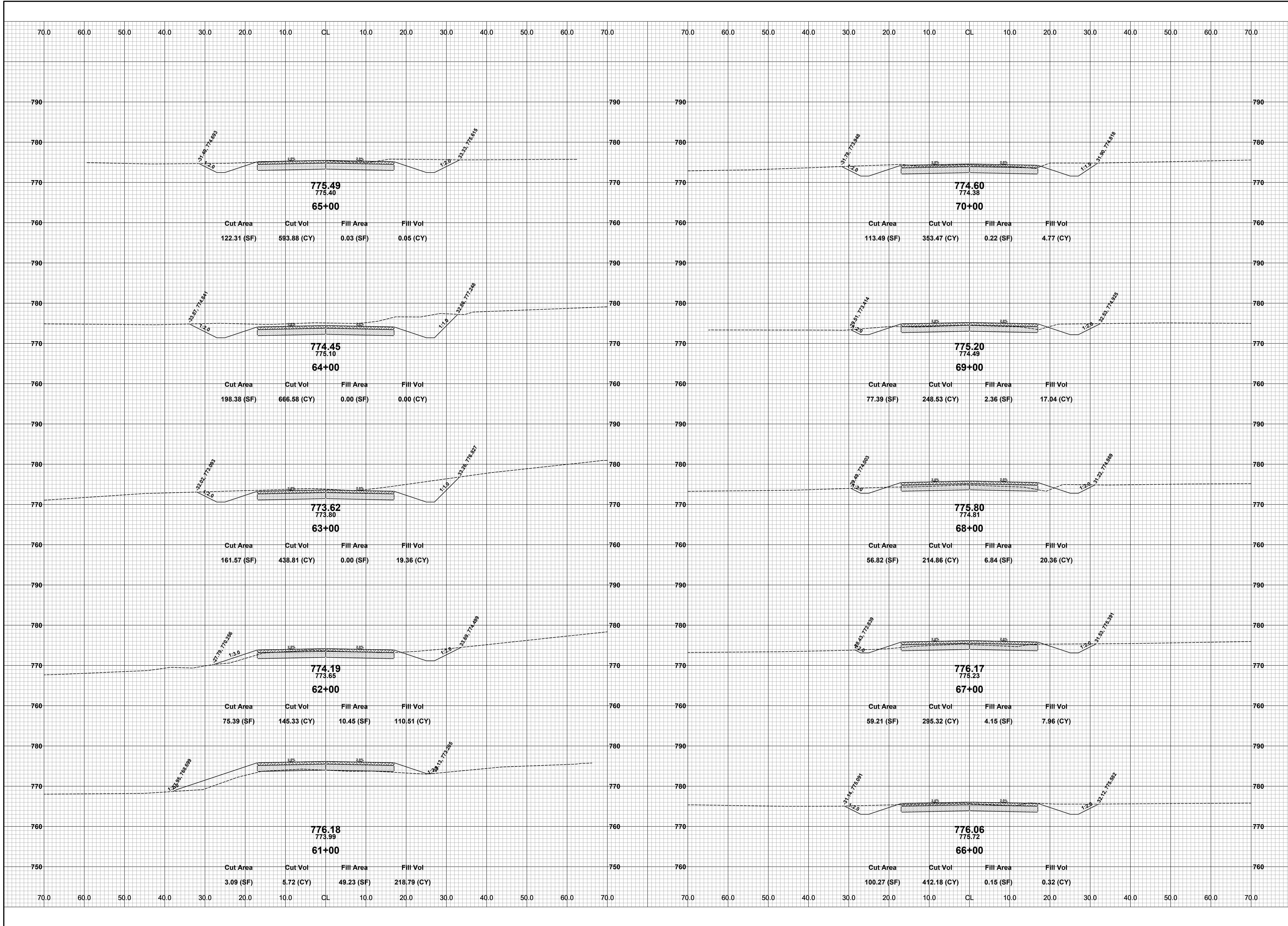
DRAWN BY: ACW
 REVIEWED BY:
 DATE: DECEMBER 2023
 SCALE: 1" = 10'



REVISIONS	
1	
2	
3	
4	
5	
6	
7	

124TH AVENUE RECONSTRUCTION PROJECT
HOPKINS & WATSON TOWNSHIPS - 15TH STREET EAST 1.24 MILES
CROSS SECTIONS - STA. 51+00 TO STA. 60+00

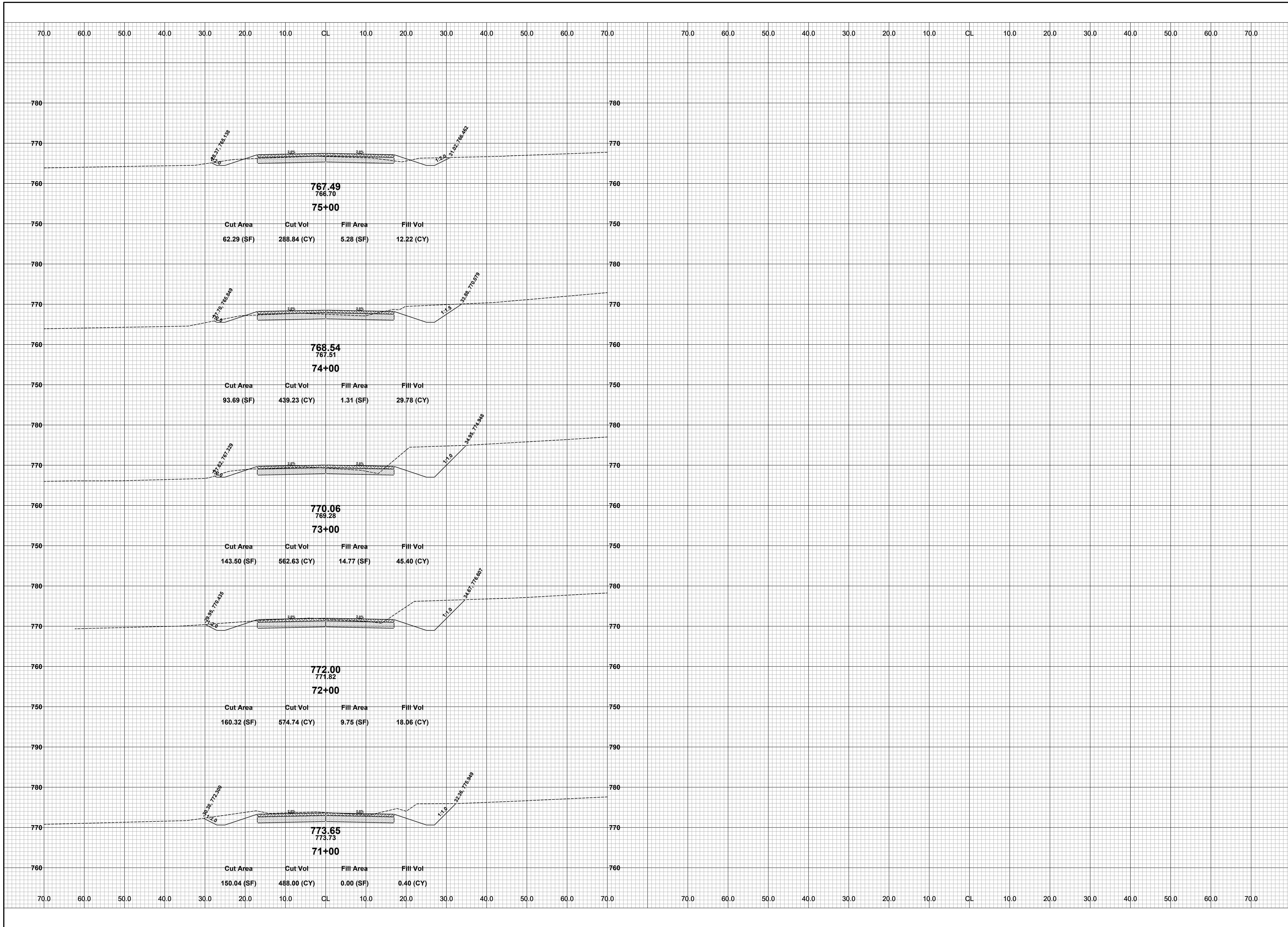
DRAWN BY: ACW
REVIEWED BY:
DATE: DECEMBER 2023
SCALE: 1"= 10'



REVISIONS	
1	
2	
3	
4	
5	
6	
7	

124TH AVENUE RECONSTRUCTION PROJECT
 HOPKINS & WATSON TOWNSHIPS - 15TH STREET EAST 1.24 MILES
 CROSS SECTIONS - STA. 61+00 TO STA. 70+00

DRAWN BY: ACW
 REVIEWED BY:
 DATE: DECEMBER 2023
 SCALE: 1" = 10'

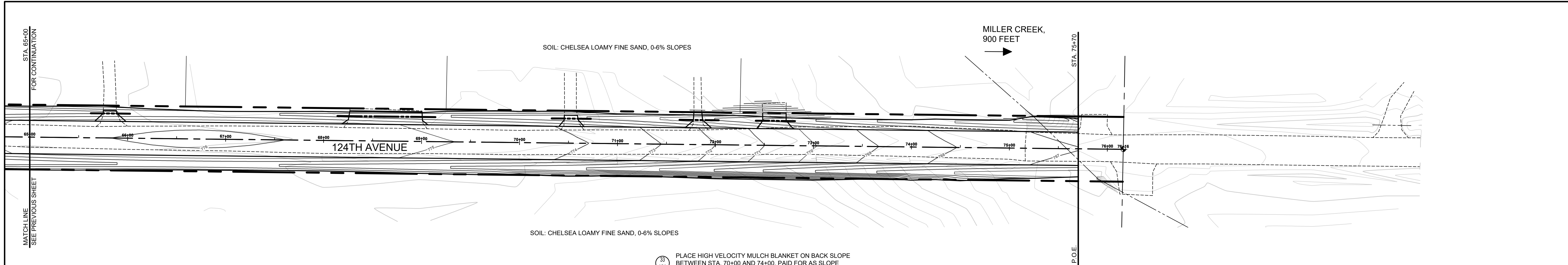


**Board of County Road Commissioners
Of Allegan County**
1308 LINCOLN ROAD
ALLEGAN, MICHIGAN 49010-9762
www.alleganroads.org
TELEPHONE (269) 673-2184 FAX (269) 673-5922

REVISIONS	
1	
2	
3	
4	
5	
6	
7	

124TH AVENUE RECONSTRUCTION PROJECT
HOPKINS & WATSON TOWNSHIPS - 15TH STREET EAST 1.24 MILES
CROSS SECTIONS - STA. 71+00 TO STA. 75+00

DRAWN BY: ACW
REVIEWED BY:
DATE: DECEMBER 2023
SCALE: 1"= 10'



**Board of County Road Commissioners
Of Allegan County**

1308 LINCOLN ROAD
ALLEGAN, MICHIGAN 49010-9762
www.alleganroads.org FAX (269) 673-5922
TELEPHONE (269) 673-2184

REVISIONS	
1	
2	
3	
4	
5	
6	
7	

124TH AVENUE RECONSTRUCTION PROJECT
HOPKINS & WATSON TOWNSHIPS - 15TH STREET EAST 1.24 MILES

SESC PLAN - STA. 65+00 TO P.O.E.

DRAWN BY: ACW
REVIEWED BY:
DATE: FEBRUARY 2024
SCALE: 1"= 40'H, 5V

PH 300050 18

SOIL EROSION & SEDIMENTATION CONTROL NOTES

- ALL CONSTRUCTION METHODS WILL BE DONE IN COMPLIANCE WITH THE MICHIGAN SOIL EROSION AND SEDIMENTATION CONTROL ACT. THE COUNTY ROAD COMMISSION WILL OBTAIN A NOTICE OF COVERAGE FROM EGLE PRIOR TO START OF CONSTRUCTION IF THE DISTURBANCE AREA OF THE PROJECT IS GREATER THAN FIVE ACRES. THE CONTRACTOR WILL BE RESPONSIBLE FOR COMPLYING WITH ALL REQUIREMENTS OF THE MICHIGAN DEPARTMENT OF TRANSPORTATION'S SESC MANUAL. EROSION CONTROL MEASURES SHOWN ON THE PLANS ARE THE MINIMUM REQUIREMENTS AND WILL NOT RELIEVE THE CONTRACTOR'S RESPONSIBILITY FOR PROVIDING ALL REQUIRED EROSION CONTROL MEASURES.
 - AVOID UNNECESSARY DISTURBING OR REMOVING OF EXISTING VEGETATED TOPSOIL OR EARTH COVER. THESE COVER AREAS ACT AS SEDIMENT FILTERS.
 - ALL TEMPORARY SOIL EROSION PROTECTION WILL REMAIN IN PLACE UNTIL REMOVAL IS REQUIRED FOR FINAL CLEAN UP AND APPROVAL.
 - GEOTEXTILE SILT FENCE WILL BE INSTALLED AS REQUIRED WHEN CROSSING CREEKS OR WHEN ADJACENT TO WETLANDS OR SURFACE WATER BODIES TO PREVENT SILTATION AND ELSEWHERE AS DIRECTED BY THE ENGINEER. SEEDING AND/OR SODDING WILL BE INSTALLED ON CREEK BANKS IMMEDIATELY AFTER CONSTRUCTION TO PREVENT EROSION.
 - MAINTENANCE, CLEANING, AND REMOVAL OF THE VARIOUS SEDIMENT CONTROL MEASURES WILL BE INCLUDED IN THE VARIOUS EROSION CONTROL ITEMS.
 - SOIL TYPE LOCATIONS ARE APPROXIMATED FROM THE UNITED STATES DEPARTMENT OF AGRICULTURE'S WEB SOIL SURVEY MAPS. DETAILED PROPERTIES FOR EACH SOIL TYPE CAN BE FOUND ON THEIR WEBSITE: WEBSOILSURVEY.NRCS.USDA.GOV
 - TEMPORARY EROSION CONTROL MEASURES WILL NOT BE MANDATORY IF STORMWATER IS DETERMINED TO BE TOPOGRAPHICALLY INCAPABLE OF LEAVING SITE.
 - SLOPE STAKE LINES AS CALLED OUT IN THE PLAN SHEETS DEFINE THE EARTH CHANGE LIMITS FOR THIS PROJECT.
 - ALLEGAN COUNTY ROAD COMMISSION ASSUMES RESPONSIBILITY FOR MAINTENANCE OF PERMANENT SOIL EROSION & SEDIMENTATION CONTROL MEASURES ONE YEAR AFTER FINAL PROJECT ACCEPTANCE AS DEFINED UNDER THE SOIL EROSION AND SEDIMENTATION CONTROL OPERATING PROCEDURES FOR THE ALLEGAN COUNTY ROAD COMMISSION.
 - TIMING & SEQUENCE: ALL SOIL EROSION & SEDIMENTATION CONTROL MEASURES MUST BE INSTALLED IN PROXIMITY TO WORK AREAS PRIOR TO WORK COMMENCING. UPON FINAL GRADING, PERMANENT EROSION AND SEDIMENTATION CONTROL MUST BE COMPLETED WITHIN TWENTY-FOUR HOURS WITHIN 150 FEET OF BODIES OF WATER, AND WITHIN FIVE DAYS ELSEWHERE.
- NUMBER IN CIRCLE REFERS TO NUMBERED DETAILS ON MDOT STANDARD PLAN R-96 SERIES, SOIL EROSION & SEDIMENTATION CONTROL MEASURES. "P" DENOTES PERMANENT MEASURE AND "T" DENOTES TEMPORARY MEASURE. SOIL EROSION CONTROL PLANS DENOTE MINIMUM EROSION MEASURES REQUIRED AS DESCRIBED BELOW.
- ALL DISTURBED AREAS NOT PAVED OR GRAVELED SHALL BE RESTORED UNDER THE PAY ITEM SLOPE RESTORATION TYPE A. THIS PAY ITEM INCLUDES PLACING MDOT SEEDING MIXTURE TUF APPLIED AT A RATE OF 220 LB/ACRE, FERTILIZER, CHEMICAL NUTRIENT, CL A APPLIED AT A RATE OF 176 LB/ACRE; MULCH AT A RATE OF 2 TON/ACRE AND MULCH ANCHORING.
- TEMPORARY SEEDING WILL BE PLACED AT LOCATIONS DETERMINED BY THE ENGINEER IN THE FIELD AND WILL INCLUDE SEEDING MIXTURE, CR APPLIED AT A RATE OF 70 LB/ACRE AND MULCH INCLUDED IN SLOPE RESTORATION TYPE A.
- DUST CONTROL MAY BE REQUIRED ON THE SUBGRADE CONSTRUCTION AND WILL INCLUDE APPLYING FRESH WATER TO BE INCLUDED IN THE ITEM OF STATION GRADING. DUST CONTROL ON THE AGGREGATE BASE COURSE WILL BE ACCOMPLISHED BY APPLYING FRESH WATER (INCLUDED IN THE ITEM OF AGGREGATE BASE, _ INCH) AS DIRECTED BY THE PROJECT ENGINEER.
- INSTALL RIPRAP, PLAIN OR RIPRAP, HEAVY AS DIRECTED BY THE ENGINEER IN THE FIELD. THE RIPRAP, PLAIN AND RIPRAP, HEAVY PAY ITEMS WILL INCLUDE A GEOTEXTILE UNDERLAYMENT.
- SILT FENCE WILL BE INSTALLED AT CREEK CROSSINGS, ADJACENT TO ALL WETLANDS AND SURFACE WATERS, AND OTHER LOCATIONS AS DIRECTED BY THE ENGINEER. EACH SILT FENCE WILL BE INSTALLED GENERALLY ALONG THE SAME CONTOUR ELEVATION.
- CONTRACTOR WILL PROVIDE DOZER TRACKING PERPENDICULAR TO THE SLOPE TO REDUCE WATER AND WIND EROSION. THIS WILL BE PERFORMED AT LOCATIONS SHOWN OR AS DIRECTED BY THE ENGINEER IN THE FIELD, TO BE INCLUDED IN THE ITEM OF EMBANKMENT.
- HIGH VELOCITY MULCH BLANKETS WILL BE USED ON STEEP BANKS. PROVIDE MULCH BLANKET, HIGH VELOCITY CENTERED ON ALL DITCH BOTTOMS WITH A LONGITUDINAL GRADE OF 2.00% OR GREATER AND AT OTHER LOCATIONS AS DIRECTED BY THE ENGINEER IN THE FIELD. PAID AS SLOPE RESTORATION TYPE C.
- CHECK DAMS WILL BE INSTALLED AT THE LOCATIONS SHOWN ON THE PLAN OR AS DIRECTED BY THE ENGINEER IN THE FIELD.

TIMING & SEQUENCE	MONTH 1			MONTH 2				MONTH 3					
	WEEK 1	WEEK 2	WEEK 3	WEEK 4	WEEK 5	WEEK 6	WEEK 7	WEEK 8	WEEK 9	WEEK 10	WEEK 11	WEEK 12	WEEK 13
ANTICIPATED START DATE: MAY 1, 2024													
INSTALL/MAINTAIN TEMPORARY CONTROL MEASURES	■	■	■	■	■	■	■	■	■	■	■	■	■
SITE CLEARING	■												
CULVERT INSTALLATIONS													
ROADWAY/SLOPE RECONSTRUCTION													
SLOPE RESTORATION/INSTALL PERMANENT CONTROL MEASURES													
REMOVE TEMPORARY MEASURES													

*SCHEDULE MAY BE ADJUSTED DEPENDING ON CONTRACTOR'S MEANS & METHODS

