

ALLEGAN COUNTY ROAD COMMISSION

108TH AVENUE CLEARING PROJECT

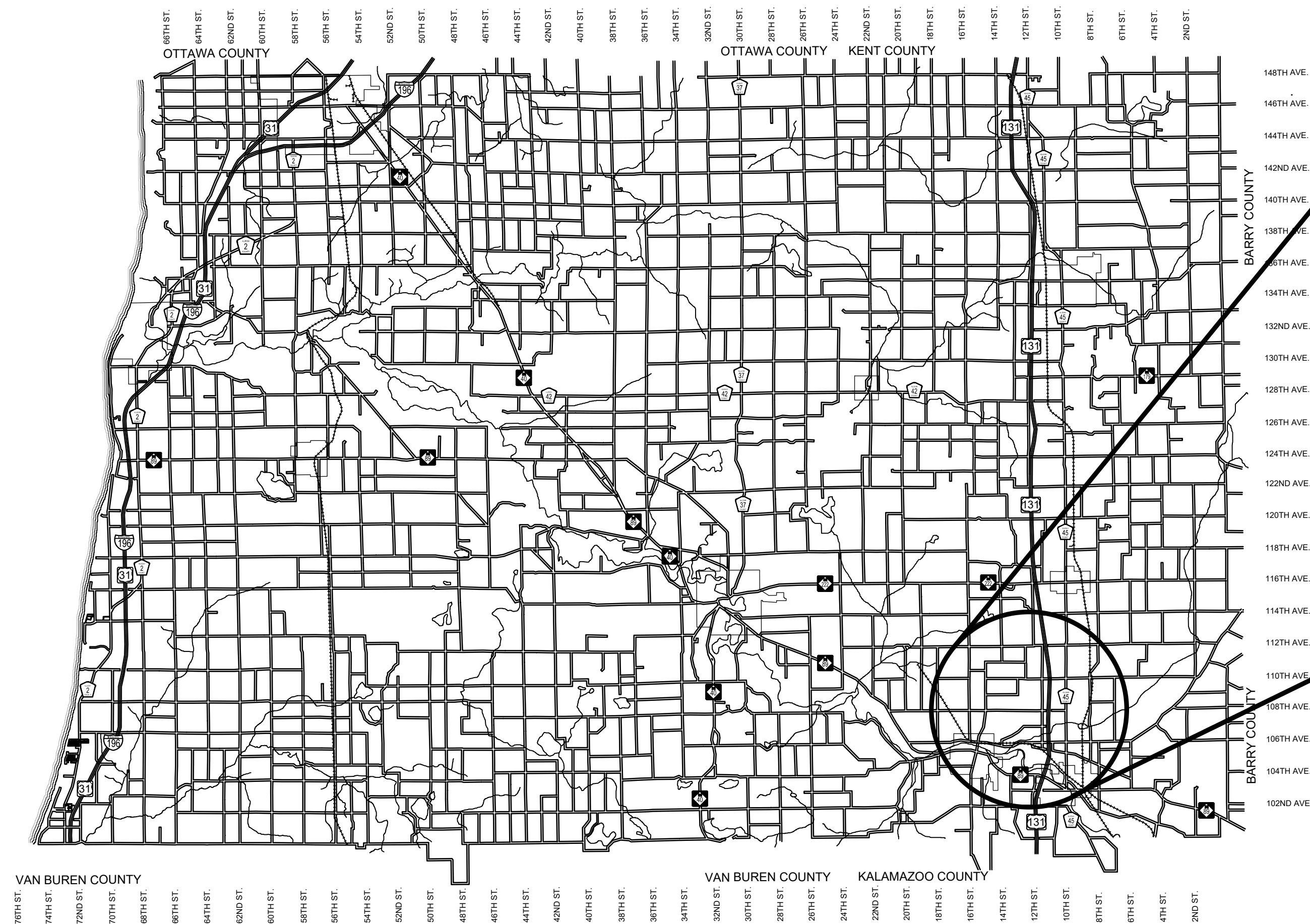
GUN PLAIN TWP - OTSEGO/GUN PLAIN TWP LINE TO 11TH STREET

NOTES

EXCEPT WHERE OTHERWISE INDICATED ON THESE PLANS OR IN THE PROPOSAL AND SUPPLEMENTAL SPECIFICATIONS CONTAINED THEREIN, ALL MATERIALS AND WORKMANSHIP SHALL BE IN ACCORDANCE WITH THE 2012 MICHIGAN DEPARTMENT OF TRANSPORTATION STANDARD SPECIFICATIONS FOR CONSTRUCTION.

THE IMPROVEMENTS COVERED BY THESE PLANS ARE IN ACCORDANCE WITH THE AMERICAN ASSOCIATION OF STATE HIGHWAY AND TRANSPORTATION OFFICIALS, 2011 EDITION; A POLICY ON GEOMETRIC DESIGN OF HIGHWAYS AND STREETS AND WITH THE GUIDELINES FOR GEOMETRIC DESIGN OF VERY LOW-VOLUME LOCAL ROADS (ADT<400), 1ST EDITION.

THE CONTRACTOR SHALL DIAL MISS DIG @ 811 FOR PROTECTION OF UNDER GROUND UTILITIES AND IN CONFORMANCE WITH PUBLIC ACT 174 OF 2013 A MINIMUM OF THREE FULL WORKING DAYS, EXCLUDING SATURDAYS, SUNDAYS AND HOLIDAYS PRIOR TO BEGINNING EACH EXCAVATION IN AREAS WHERE PUBLIC UTILITIES HAVE NOT BEEN PREVIOUSLY LOCATED. MEMBERS WILL THUS BE ROUTINELY NOTIFIED. THIS DOES NOT RELIEVE THE CONTRACTOR OF THE RESPONSIBILITY OF NOTIFYING UTILITY OWNERS WHO MAY NOT BE A PART OF THE "MISS DIG" ALERT SYSTEM.



ALLEGAN COUNTY, MICHIGAN
NOT TO SCALE

INDEX OF PLANS
1 - COVER SHEET
2 - PLAN AND SECCP - STA. P.O.B. TO STA. P.O.E

UTILITY CONTACTS	
<p>ELECTRIC CONSUMERS ENERGY 2500 E. CORK STREET KALAMAZOO, MI 49001 269-337-2338 MR. BILL BRINDLEY wjbrindley@cmsenergy.com</p>	<p>TELEPHONE AT&T 2919 MILCORK STREET ROOM 101 KALAMAZOO, MI 49001 269-384-4436 MR. TODD SHIBAYAMA ts2385@att.com</p>
<p>CABLE CHARTER COMMUNICATION 4176 COMMERCIAL AVE PORTAGE, MI 49002 269-2178152 MARK BURKE mark.burke@charter.com</p>	
<p>*MISS DIG* 811</p>	

REVISIONS
1
2
3
4
5
6
7

CONTRACT FOR ROAD IMPROVEMENTS
0.26 MILES OF ROADWAY CONSTRUCTION INCLUDING CLEARING AND RESTORATION ON 108TH AVENUE FROM OTSEGO/GUN PLAIN TOWNSHIP LINE TO 11TH STREET IN GUN PLAIN TOWNSHIP, ALLEGAN COUNTY.

PREPARED UNDER THE SUPERVISION OF:

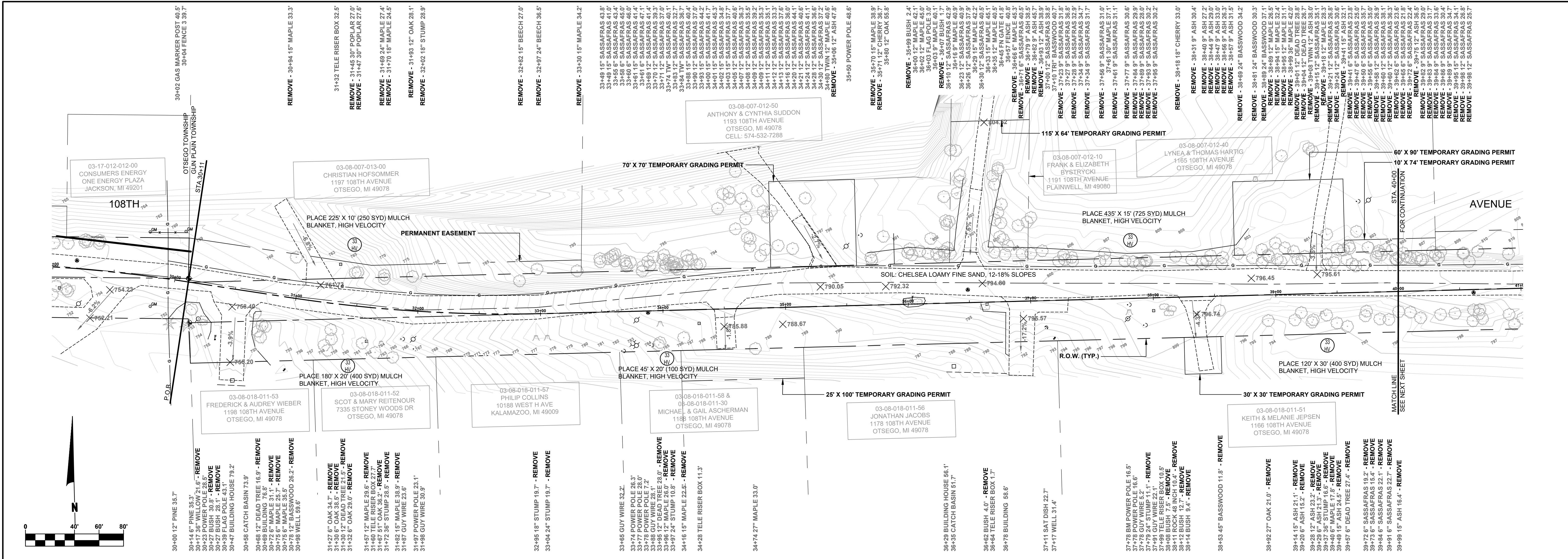
JASON S. EDWARDS
REGISTERED PROFESSIONAL ENGINEER No. 59473

**Board of County Road Commissioners
Of Allegan County**
1308 LINCOLN ROAD
ALLEGAN, MICHIGAN 49010-9762
www.alleganroads.org
TELEPHONE (269) 673-2184 FAX (269) 673-5922

108TH AVENUE CLEARING PROJECT
GUN PLAIN TWP - OTSEGO/GUN PLAIN TWP LINE TO 11TH STREET
COVER SHEET

DRAWN BY: J.S.E.
REVIEWED BY:
DATE: JUNE, 2017
SCALE: NONE

LH 4924 1



PROJECT NOTES

THE "2012 STANDARD SPECIFICATIONS FOR CONSTRUCTION" AND "STANDARD PLANS" BY THE MICHIGAN DEPARTMENT OF TRANSPORTATION (MDOT) ARE HEREBY INCORPORATED INTO THESE CONTRACT DOCUMENTS. COPIES OF THESE STANDARDS ARE AVAILABLE FOR INSPECTION AT THE OFFICE OF THE ENGINEER.

THE CONTRACTOR WILL BE RESPONSIBLE FOR CONTACTING THE ALLEGAN COUNTY ROAD COMMISSION TO NOTIFY THEM THAT WORK IS COMMENCING.

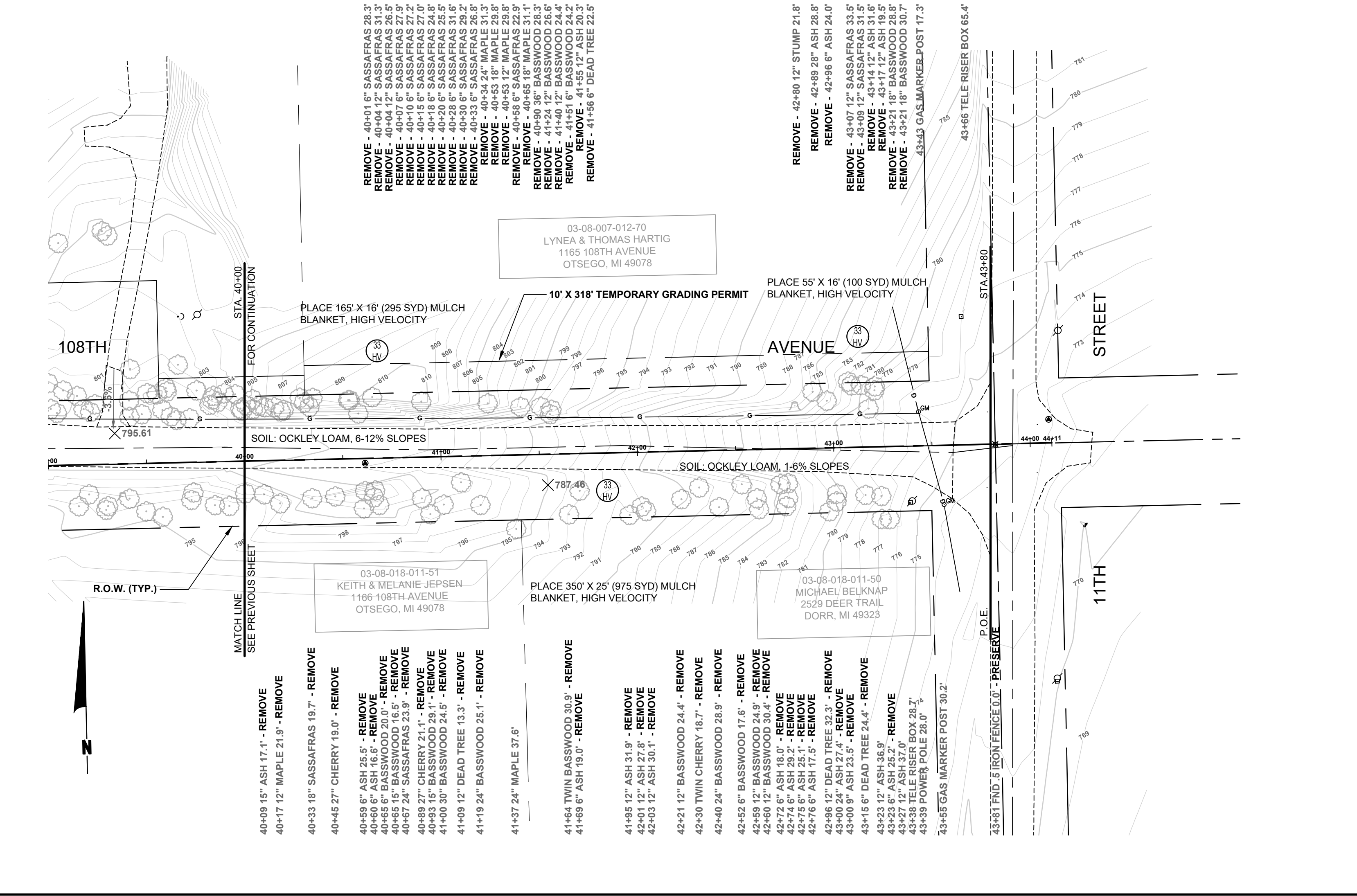
AS PART OF THIS PROJECT THE CONTRACTOR WILL COORDINATE WITH THE ALLEGAN COUNTY ROAD COMMISSION TO PRESERVE AND RESET ALL GOVERNMENT CORNERS WITHIN THE PROJECT LIMITS.

CONTRACTOR WILL RELOCATE ALL MAILBOXES TO A TEMPORARY CENTRAL LOCATION APPROVED BY THE POSTAL SERVICE PRIOR TO CONSTRUCTION. CONTRACTOR SHALL INSTALL A 1" x 3" STAKE WITH THE RESPECTIVE PROPERTY ADDRESS WRITTEN ON IT IN THE FRONT YARD OF EACH RESIDENCE TO ASSIST WITH IDENTIFICATION FOR EMERGENCY VEHICLES. PAYMENT FOR RELOCATION WILL BE INCLUDED IN THE ITEM OF PROJECT CLEANUP. AT THE COMPLETION OF THE PROJECT SAID MAILBOXES SHALL BE RESET AT THEIR APPROPRIATE LOCATIONS.

ALL DISTURBED AREAS WILL BE RESTORED WITH TOPSOIL SURFACE, SALV. LM (3 INCHES), MDOOT SEED MIXTURE TUF (220#/ACRE); FERTILIZER, CHEMICAL NUTRIENT, CL A (176#/ACRE); AND MULCH AND MULCH ANCHORING (2 TON/ACRE). TO BE PAID AS RESTORATION (LUMP SUM).

DIMENSIONS TAKE PRECEDENCE OVER SCALE. CONTRACTOR TO VERIFY ALL DIMENSIONS IN FIELD.

DATUM REFERS TO NAVD83 DATUM.



SOIL EROSION & SEDIMENTATION CONTROL NOTES

- ALL CONSTRUCTION METHODS WILL BE DONE IN COMPLIANCE WITH THE MICHIGAN SOIL EROSION AND SEDIMENTATION CONTROL ACT. THE CONTRACTOR WILL BE RESPONSIBLE FOR OBTAINING A "SOIL EROSION PERMIT" FROM THE COUNTY ANGRICULTURE PERMIT BY RULE NOTICE OF COVERAGE FROM THE MDEQ PRIOR TO START OF CONSTRUCTION. THE CONTRACTOR WILL BE RESPONSIBLE FOR COMPLYING WITH ALL REQUIREMENTS OF THE COUNTY "SOIL EROSION PERMIT" AND FOR ALL CERTIFIED STORM WATER INSPECTION SERVICE REQUIRED BY THE "PERMIT BY RULE." EROSION CONTROL MEASURES SHOWN ON THE PLANS ARE THE MINIMUM REQUIREMENTS AND WILL NOT RELIEVE THE CONTRACTOR'S RESPONSIBILITY FOR PROVIDING ALL REQUIRED EROSION CONTROL MEASURES.
- AVOID UNNECESSARY DISTURBING OR REMOVING OF EXISTING VEGETATED TOPSOIL OR EARTH COVER. THESE COVER AREAS ACT AS SEDIMENT FILTERS.
- ALL TEMPORARY SOIL EROSION PROTECTION WILL REMAIN IN PLACE UNTIL REMOVAL IS REQUIRED FOR FINAL CLEAN UP AND APPROVAL.
- GEOTEXTILE SILT FENCE WILL BE INSTALLED AS REQUIRED WHEN CROSSING CREEKS OR WHEN ADJACENT TO WETLANDS OR SURFACE WATER BODIES TO PREVENT SILTATION AND ELSEWHERE AS DIRECTED BY THE ENGINEER. SEEDING AND/OR SODDING WILL BE INSTALLED ON CREEK BANKS IMMEDIATELY AFTER CONSTRUCTION TO PREVENT EROSION.
- MAINTENANCE, CLEANING, AND REMOVAL OF THE VARIOUS SEDIMENT CONTROL MEASURES WILL BE INCLUDED IN THE VARIOUS EROSION CONTROL ITEMS.
- SOIL TYPE LOCATIONS ARE APPROXIMATED FROM THE UNITED STATES DEPARTMENT OF AGRICULTURE'S WEB SOIL SURVEY MAPS. DETAILED PROPERTIES FOR EACH SOIL TYPE CAN BE FOUND ON THEIR WEBSITE: WEBSOILSURVEY.NRCS.USDA.GOV

NUMBER IN CIRCLE REFERS TO NUMBERED DETAILS ON MDOOT STANDARD PLAN R-96 SERIES. SOIL EROSION & SEDIMENTATION CONTROL MEASURES: "P" DENOTES PERMANENT MEASURE AND "T" DENOTES TEMPORARY MEASURE. SOIL EROSION CONTROL PLANS DENOTE MINIMUM EROSION MEASURES REQUIRED AS DESCRIBED BELOW.

ALL DISTURBED AREAS NOT PAVED OR GRAVELED SHALL BE RESTORED UNDER THE PAY ITEM RESTORATION (LUMP SUM). THIS PAY ITEM INCLUDES PLACING MDOOT SEEDING MIXTURE TUF APPLIED AT A RATE OF 220 LBS/ACRE, FERTILIZER, CHEMICAL NUTRIENT, CL A APPLIED AT A RATE OF 176 LBS/ACRE, MULCH AT A RATE OF 2 TON/ACRE AND MULCH ANCHORING.

HIGH VELOCITY MULCH BLANKETS WILL BE USED ON STEEP BANKS. PROVIDE MULCH BLANKET, HIGH VELOCITY CENTERED ON ALL DITCH BOTTOMS WITH A LONGITUDINAL GRADE OF 2.00% OR GREATER AND AT OTHER LOCATIONS AS DIRECTED BY THE ENGINEER IN THE FIELD.

Board of County Road Commissioners
Of Allegan County

1308 LINCOLN ROAD
ALLEGAN, MICHIGAN 49010-9762
www.alleganroads.org
TELEPHONE (269) 673-2184 FAX (269) 673-5922

108TH AVENUE CLEARING PROJECT

GUN PLAIN TWP - OTSEGO/GUN PLAIN TWP LINE TO 11TH STREET

PLAN AND SECCP - STA. P.O.B. TO STA. P.O.E.

REVISIONS	
1	
2	
3	
4	
5	
6	
7	

DRAWN BY: RPB

REVIEWED BY:

DATE: MAY, 2018

SCALE: 1"= 40'H, 5V

LH 4924

2