

ALLEGAN COUNTY ROAD COMMISSION

24TH STREET CULVERT REPLACEMENT PROJECT

1,370 FEET NORTH OF 142ND AVENUE

SALEM/DORR TOWNSHIPS

UTILITY CONTACTS

ELECTRIC
GREAT LAKES ENERGY
1049 133RD AVENUE
WAYLAND, MI 49348
269-792-0532
MR. JEFF HICKS
jhicks@glenergy.com

TELEPHONE
AT&T
955 36TH STREET
GRAND RAPIDS, MI 49508
616-246-7302
MR. CHAD VANTIL
cv1519@att.com

GAS TRANSMISSION
CONSUMERS ENERGY
2500 E CORK ST
KALAMAZOO, MI 49001
989-574-7538
MR. KEVIN COUTURIER
kevin.couturier@cmsenergy.com

MISS DIG 811

Board of County Road Commissioners
Of Allegan County

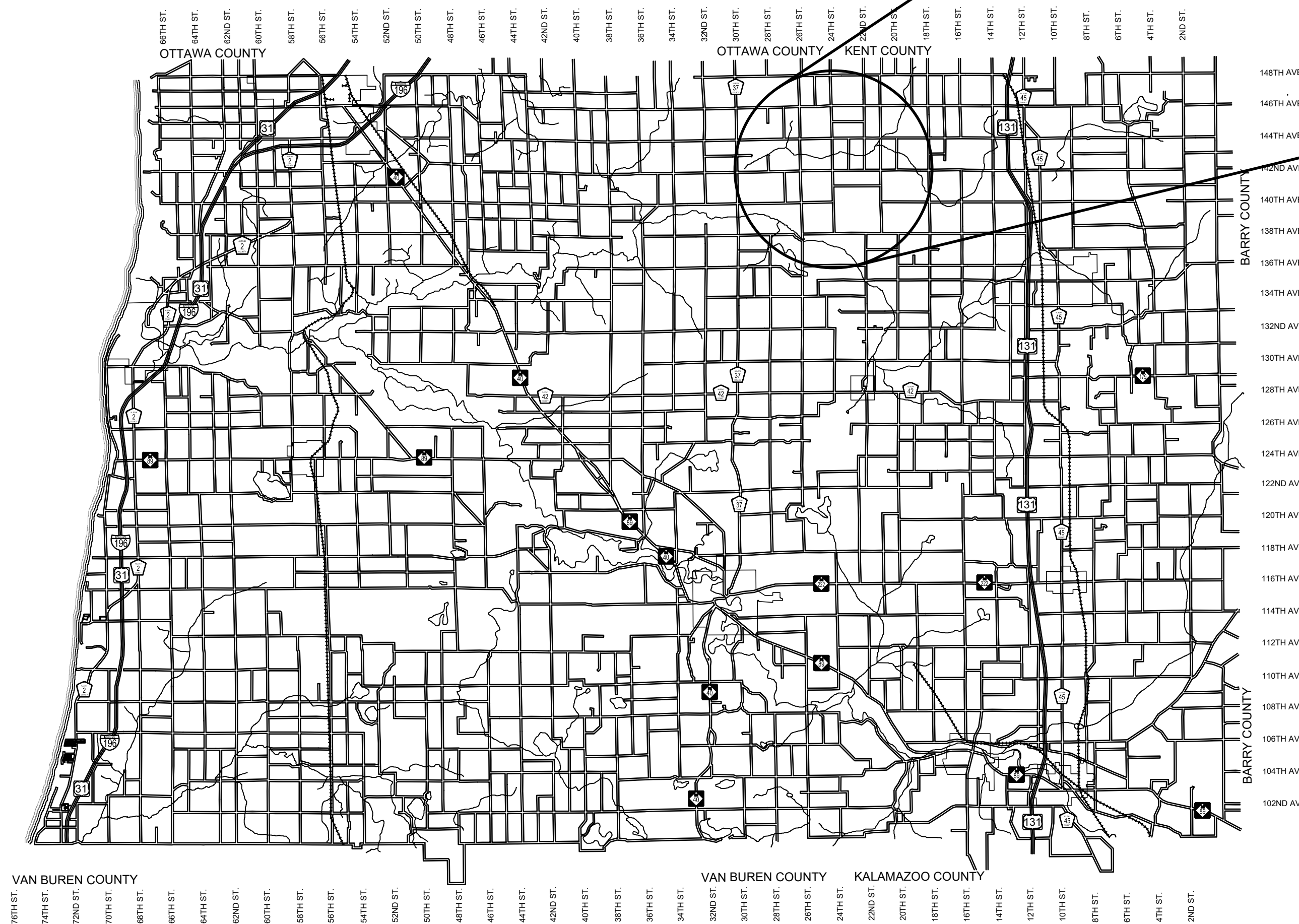
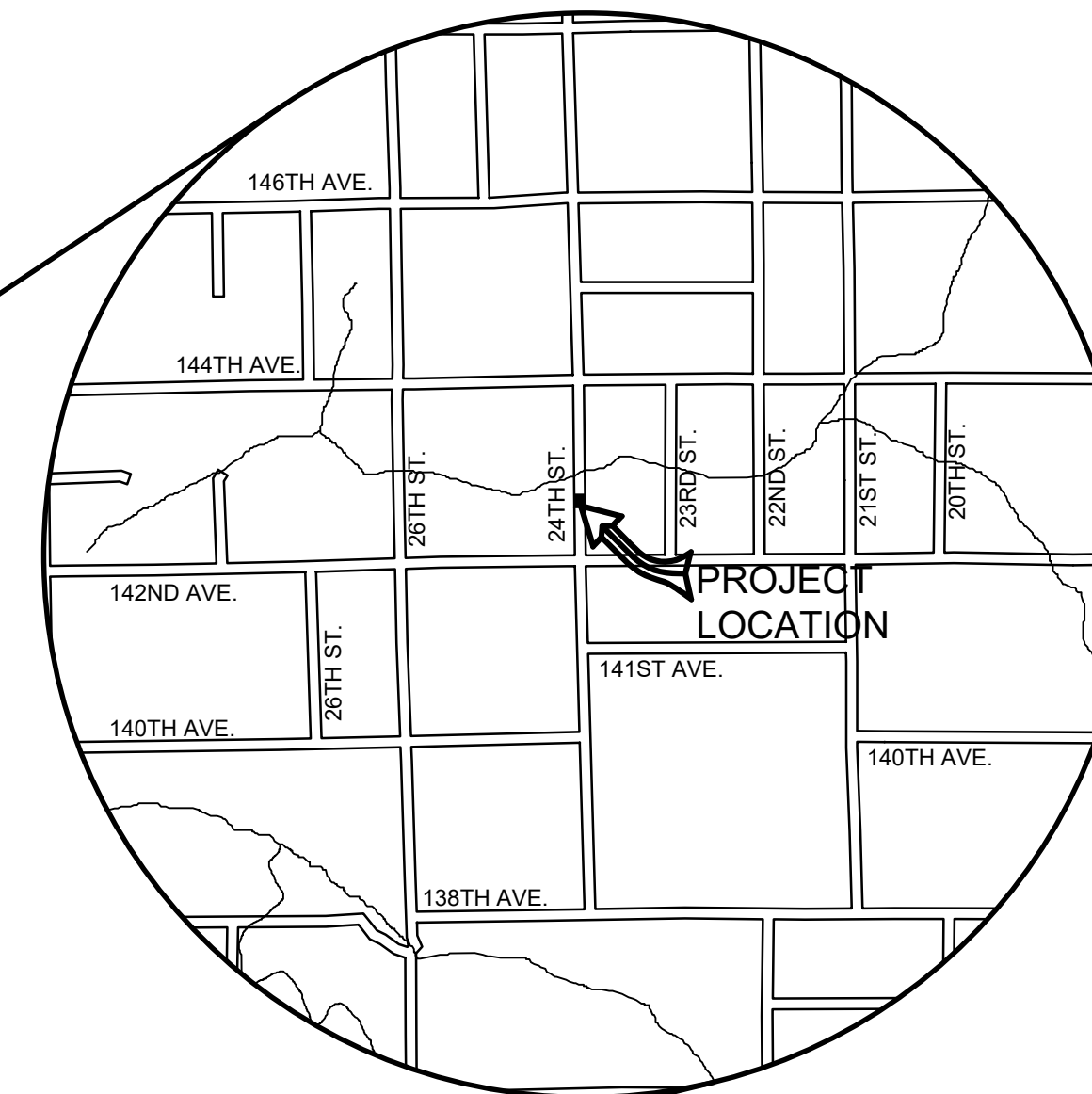
1308 LINCOLN ROAD
ALLEGAN, MICHIGAN 49010-9762
www.alleganroads.org
TELEPHONE (269) 673-2184 FAX (269) 673-5922

EXCEPT WHERE OTHERWISE INDICATED ON THESE PLANS OR IN THE PROPOSAL AND SUPPLEMENTAL SPECIFICATIONS CONTAINED THEREIN, ALL MATERIALS AND WORKMANSHIP SHALL BE IN ACCORDANCE WITH THE 2020 MICHIGAN DEPARTMENT OF TRANSPORTATION STANDARD SPECIFICATIONS FOR CONSTRUCTION.

THE PLACING OF PAVEMENT MARKINGS AND TRAFFIC CONTROL SIGNS SHALL BE DONE IN ACCORDANCE WITH THE 2011 MICHIGAN MANUAL OF UNIFORM TRAFFIC CONTROL DEVICES AS AMENDED.

THE IMPROVEMENTS COVERED BY THESE PLANS ARE IN ACCORDANCE WITH THE AMERICAN ASSOCIATION OF STATE HIGHWAY AND TRANSPORTATION OFFICIALS, 2011 EDITION, A POLICY ON GEOMETRIC DESIGN OF HIGHWAYS AND STREETS.

THE CONTRACTOR SHALL DIAL MISS DIG @ 811 FOR PROTECTION OF UNDER GROUND UTILITIES AND IN CONFORMANCE WITH PUBLIC ACT 174 OF 2013 A MINIMUM OF THREE FULL WORKING DAYS, EXCLUDING SATURDAYS, SUNDAYS AND HOLIDAYS PRIOR TO BEGINNING EACH EXCAVATION IN AREAS WHERE PUBLIC UTILITIES HAVE NOT BEEN PREVIOUSLY LOCATED. MEMBERS WILL THUS BE ROUTINELY NOTIFIED. THIS DOES NOT RELIEVE THE CONTRACTOR OF THE RESPONSIBILITY OF NOTIFYING UTILITY OWNERS WHO MAY NOT BE A PART OF THE "MISS DIG" ALERT SYSTEM.



ALLEGAN COUNTY, MICHIGAN
NOT TO SCALE

INDEX OF PLANS

- 1 - COVER SHEET
- 2 - TYPICAL SECTIONS, DETAILS, & NOTES
- 3 - PLAN AND PROFILE AND SOIL EROSION AND SEDIMENTATION CONTROL PLAN

REVISIONS

1	2	3	4	5	6	7
---	---	---	---	---	---	---

24TH STREET CULVERT REPLACEMENT
SALEM/DORR TOWNSHIPS - 1,370 FEET NORTH OF 142ND AVENUE

COVER SHEET

CONTRACT FOR ROAD IMPROVEMENTS

CULVERT REPLACEMENT INCLUDING CLEARING, GRADE ESTABLISHMENT, SAND SUBBASE, AGGREGATE BASE, AND RESTORATION ON 24TH STREET APPROXIMATELY 1,370 FEET NORTH OF 142ND AVENUE ON THE SALEM TOWNSHIP AND DORR TOWNSHIP LINE, ALLEGAN COUNTY.

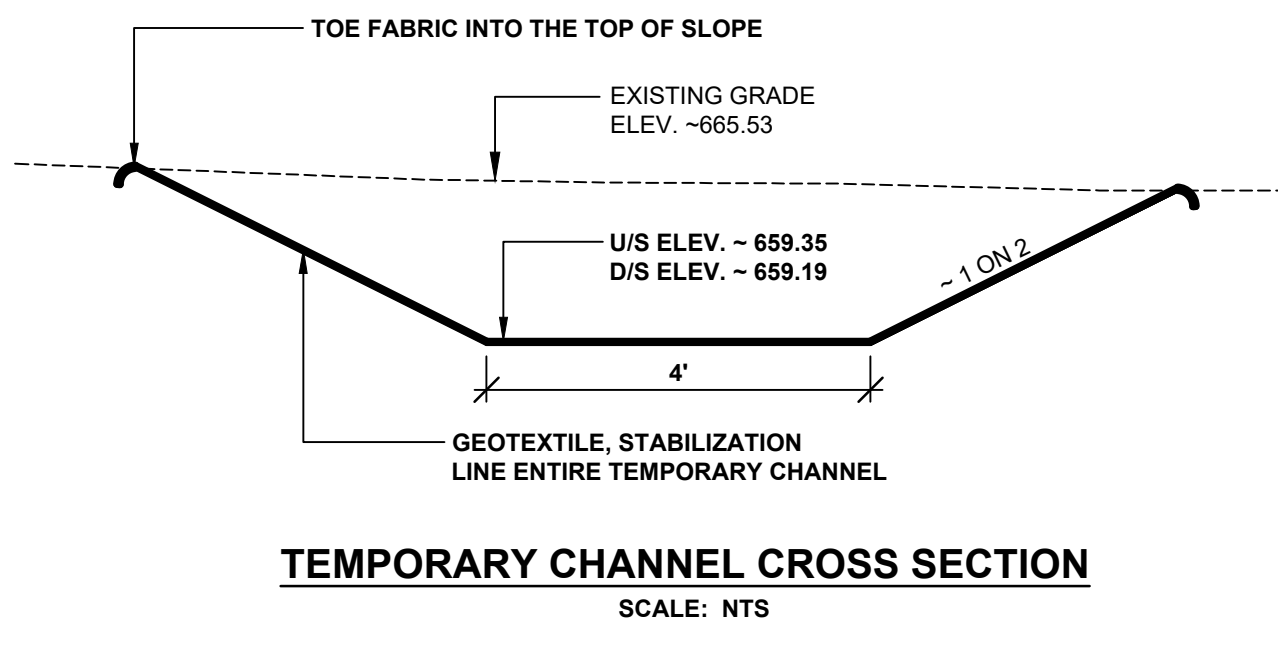
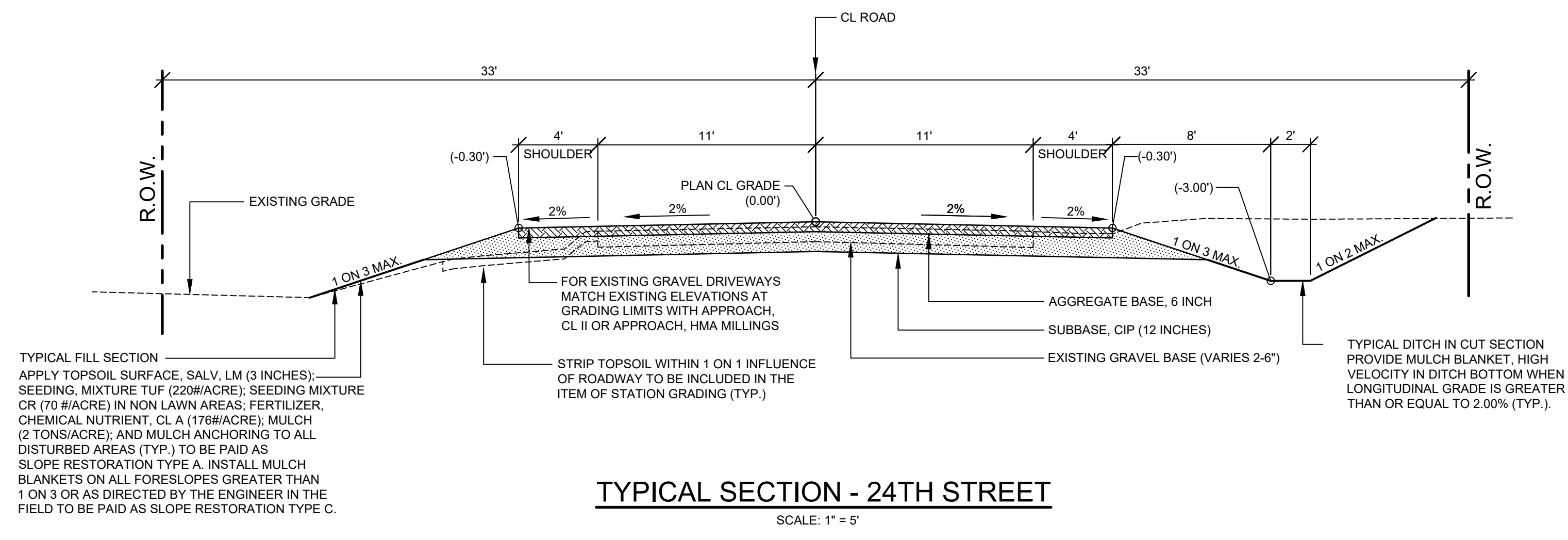
PREPARED UNDER THE SUPERVISION OF:



RYAN P. BROWN
REGISTERED PROFESSIONAL ENGINEER No. 65933

DRAWN BY:
REVIEWED BY: RPB
DATE: SEPTEMBER 2022
SCALE: NONE

LH 400077 1



PROJECT NOTES

THE "2020 STANDARD SPECIFICATIONS FOR CONSTRUCTION" AND "STANDARD PLANS" BY THE MICHIGAN DEPARTMENT OF TRANSPORTATION (MDOT) ARE HEREBY INCORPORATED INTO THESE CONTRACT DOCUMENTS. COPIES OF THESE STANDARDS ARE AVAILABLE FOR INSPECTION AT THE OFFICE OF THE ENGINEER.

THE CONTRACTOR WILL BE RESPONSIBLE FOR CONTACTING THE ALLEGAN COUNTY ROAD COMMISSION TO NOTIFY THEM THAT WORK IS COMMENCING AT LEAST ONE WEEK PRIOR TO CONSTRUCTION. THE ALLEGAN COUNTY ROAD COMMISSION WILL SET UP THE NECESSARY DETOUR ROUTE. THE CONTRACTOR WILL BE RESPONSIBLE FOR PROVIDING THE BARRICADES.

THE CONTRACTOR SHOULD NOTE THAT STATION GRADING WILL INCLUDE THE REMOVAL OF FENCES, CULVERTS, BRUSH, TREES SMALLER THAN 6", CONCRETE FOUNDATIONS, GUARDRAIL, AND MISCELLANEOUS ITEMS AS REQUIRED AND WILL ALSO INCLUDE ALL EARTH EXCAVATION, EMBANKMENT, AND ALL OTHER OPERATIONS NECESSARY TO DEVELOP THE DESIRED CROSS SECTION. ALL TOPSOIL AND OTHER UNSUITABLE MATERIAL LOCATED BENEATH THE PROPOSED PAVEMENT SECTION WILL BE REMOVED TO THE SUBGRADE ELEVATION AS PART OF STATION GRADING. ALL TOPSOIL REMOVED MAY BE STOCKPILED AND REUSED AS TOPSOIL SURFACE, SALV. LM.

ALL FILL FOR THIS PROJECT MUST BE OBTAINED AND FURNISHED BY THE CONTRACTOR. ALL REQUIRED FILL SHALL BE SELECTED EXCAVATED MATERIAL FROM THE SITE APPROVED BY THE ENGINEER, OR MDOT CLASS II GRANULAR MATERIAL FROM BORROW. EXCESS FILL WILL BE REMOVED FROM SITE BY THE CONTRACTOR. NO BORROW OR SOIL REMOVAL ARRANGEMENTS HAVE BEEN PREARRANGED FOR THIS PROJECT AND WILL BE THE TOTAL RESPONSIBILITY OF THE CONTRACTOR.

THE ITEM OF SUBBASE, CIP WILL BE PAID FOR AT PLAN QUANTITY EXCEPT IN THE CASE OF A DESIGN CHANGE OR DEMONSTRATED ERROR.

ALL DISTURBED AREAS NOT TO BE PAVED WILL BE RESTORED WITH TOPSOIL SURFACE, SALV. LM (3 INCHES), MDOT SEED MIXTURE TUF (220#/ACRE); SEEDING MIXTURE CR (70 #/ACRE) IN NON LAWN AREAS; FERTILIZER, CHEMICAL NUTRIENT, CL A (176#/ACRE); MULCH (2 TONS/ACRE); AND MULCH ANCHORING TO ALL DISTURBED AREAS (TYP.) TO BE PAID AS SLOPE RESTORATION TYPE A. INSTALL MULCH BLANKETS ON ALL SLOPES GREATER THAN 1 ON 3 OR AS DIRECTED BY THE ENGINEER IN THE FIELD TO BE PAID AS SLOPE RESTORATION TYPE C.

ADEQUATE DUST CONTROL MEASURES WILL BE MAINTAINED BY THE CONTRACTOR AS DIRECTED BY THE ENGINEER IN THE FIELD, TO BE INCLUDED IN THE VARIOUS ITEMS OF WORK.

THE CONTRACTOR IS RESPONSIBLE FOR MAINTAINING EXISTING DRAINAGE PATTERNS, AND WILL RESOLVE ANY DRAINAGE PROBLEMS ON ADJACENT PROPERTIES WHICH MAY RESULT FROM THE CONTRACTOR'S ACTIVITIES.

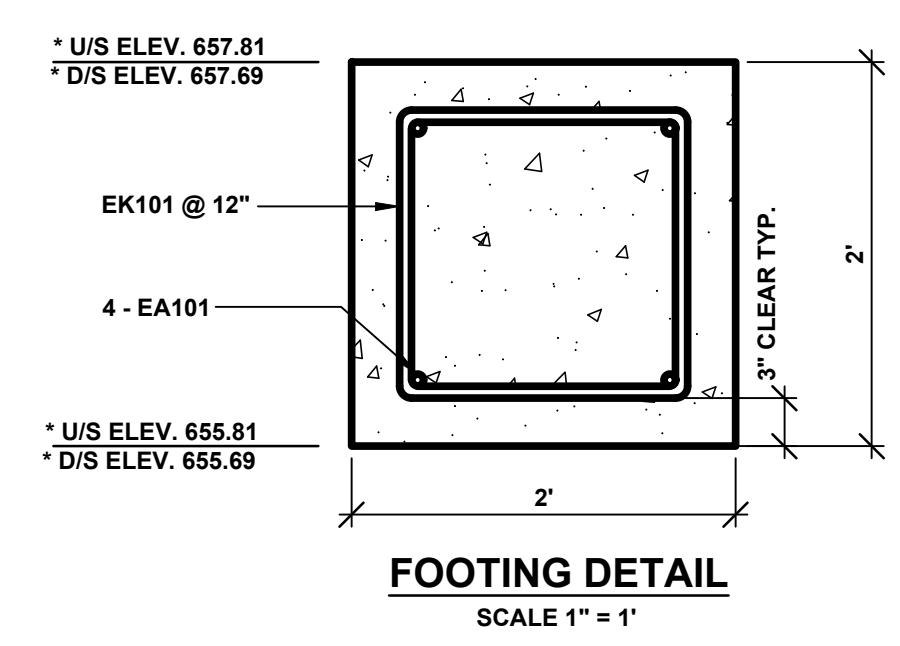
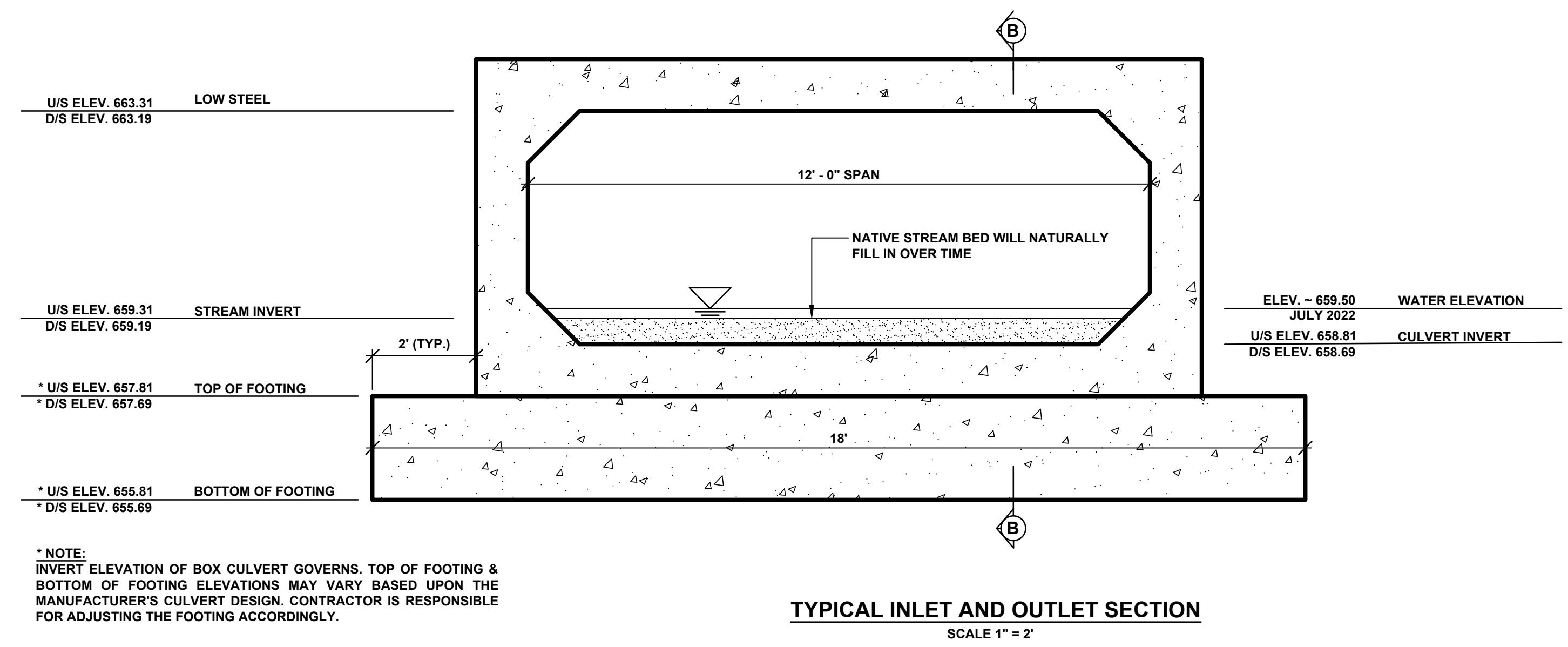
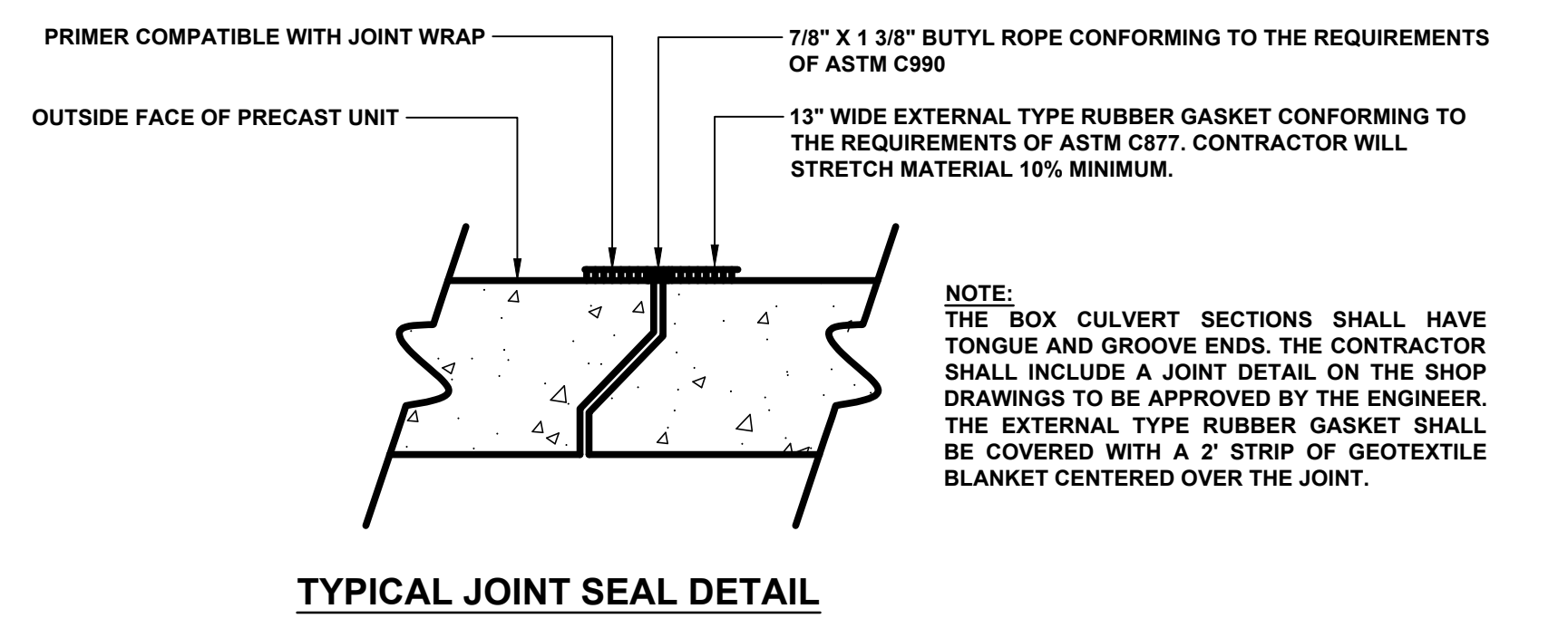
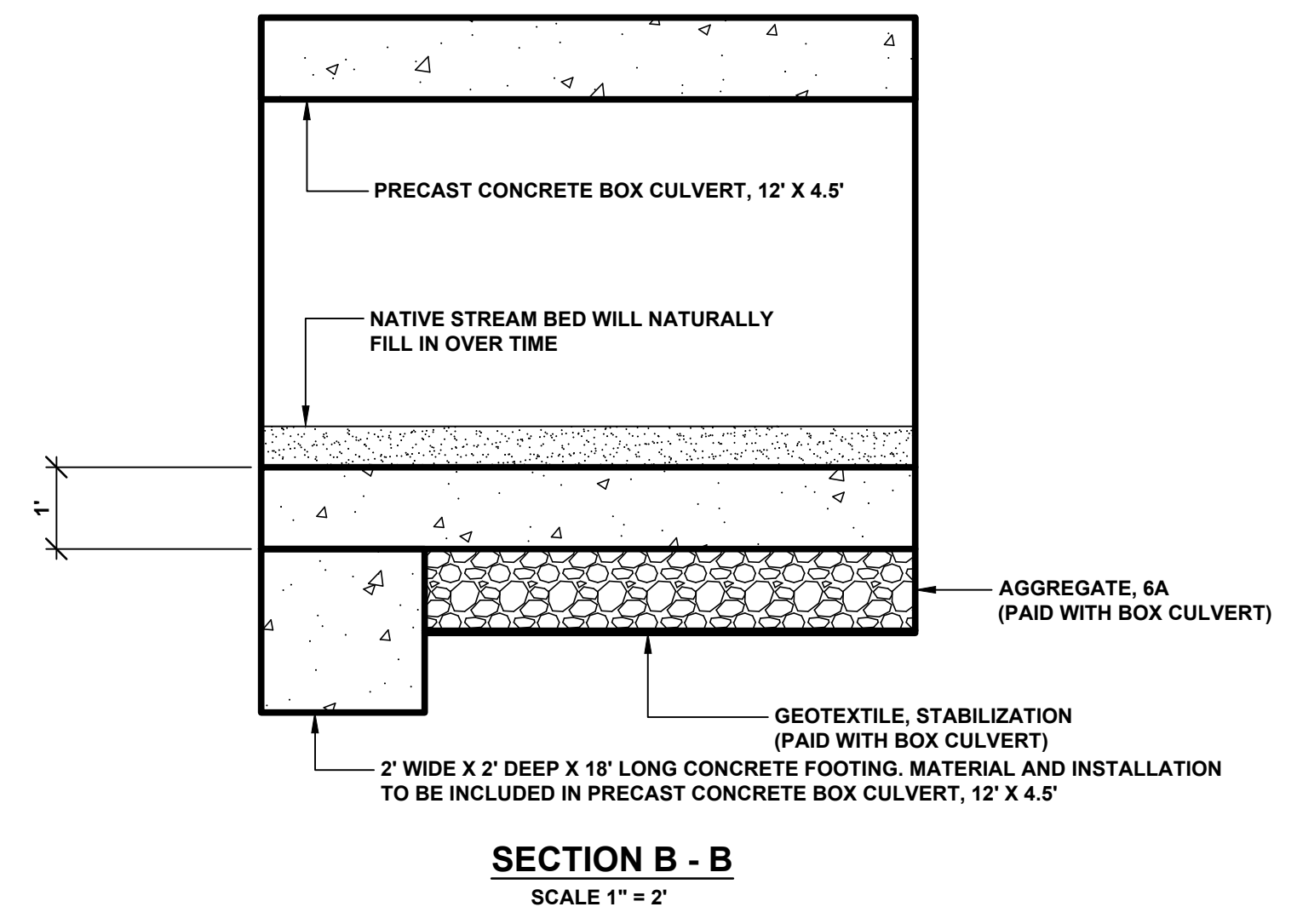
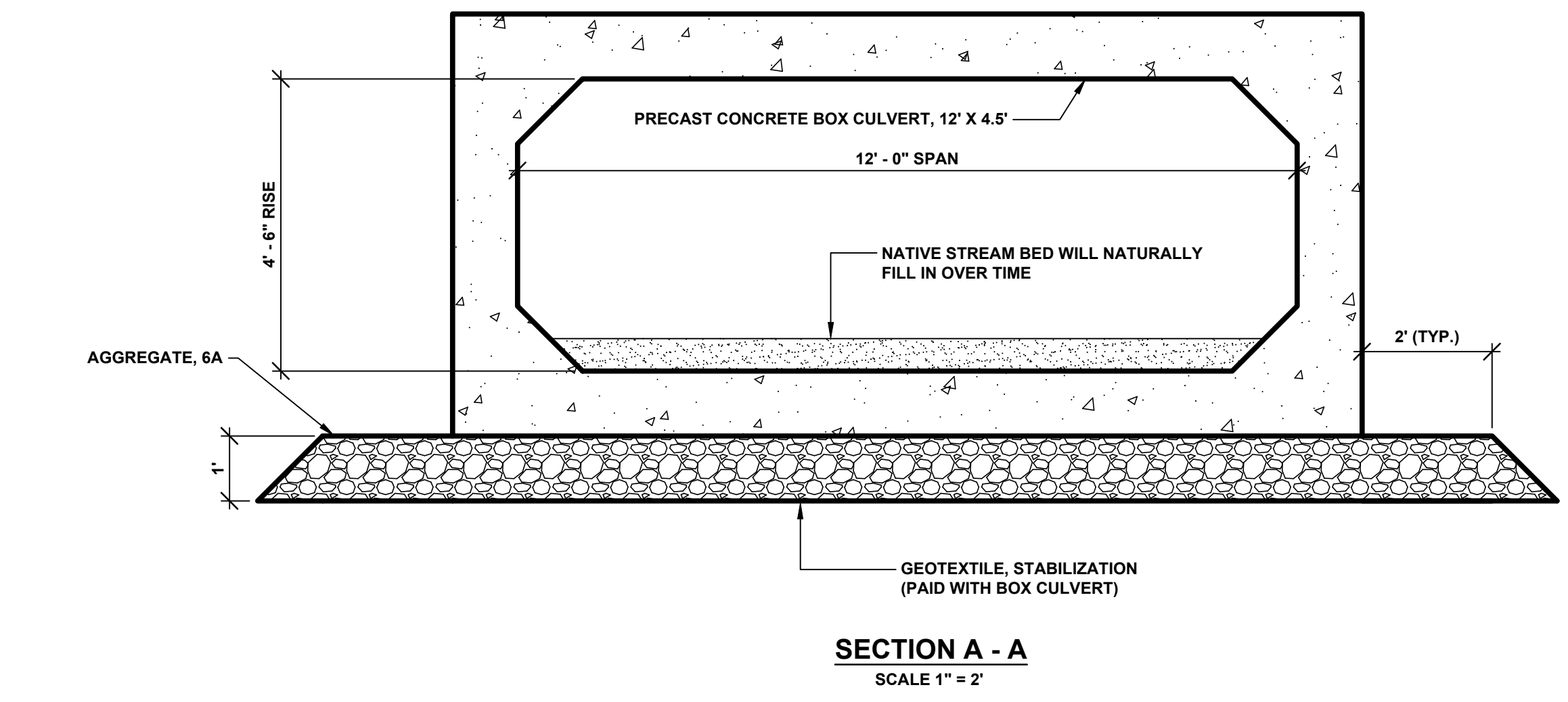
DATUM REFERS TO NAVD88 DATUM.

DIMENSIONS TAKE PRECEDENCE OVER SCALE. CONTRACTOR TO VERIFY ALL DIMENSIONS IN FIELD.

UTILITY NOTES

FOR PROTECTION OF UNDERGROUND UTILITIES AND IN CONFORMANCE WITH PUBLIC ACT 174 OF 2013, THE CONTRACTOR WILL CONTACT "MISS DIG" AT 811, A MINIMUM OF 72 HOURS, EXCLUDING SATURDAYS, SUNDAYS, AND HOLIDAYS, PRIOR TO BEGINNING EACH EXCAVATION IN AREAS WHERE PUBLIC UTILITIES HAVE NOT BEEN PREVIOUSLY LOCATED. MEMBERS WILL BE ROUTINELY NOTIFIED. THIS DOES NOT RELIEVE THE CONTRACTOR OF THE RESPONSIBILITY OF NOTIFYING UTILITY OWNERS WHO MAY NOT BE A PART OF THE "MISS DIG" ALERT SYSTEM.

THE CONTRACTOR WILL LOCATE ALL ACTIVE UNDERGROUND UTILITIES PRIOR TO STARTING WORK AND WILL CONDUCT HIS OPERATIONS IN A MANNER AS TO ENSURE THAT THOSE UTILITIES NOT REQUIRING RELOCATION WILL NOT BE DISTURBED.



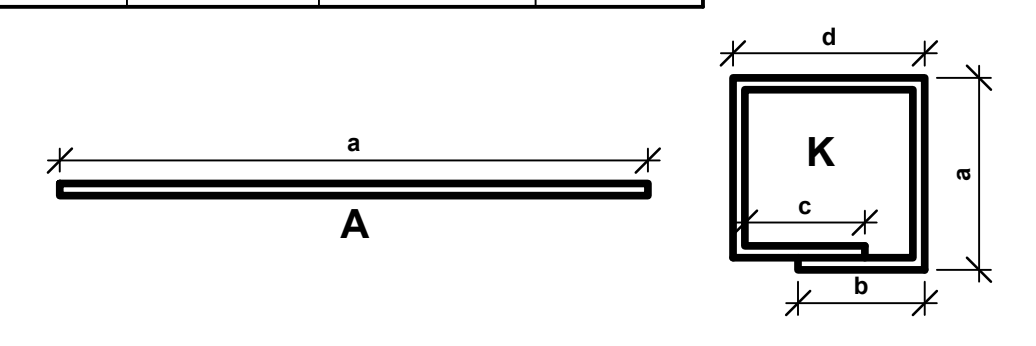
STEEL REINFORCEMENT SCHEDULE

BAR	a	b	c	d	SIZE	LENGTH	NO. REQUIRED	TOTAL WEIGHT
EA101	17' - 6"				#6	17' - 6"	8	210
EK101	1' - 6"	1' - 0"	1' - 0"	1' - 6"	#6	6' - 6"	38	371

NOTES:
ALL RIGHT ANGLE BENDS IN REINFORCING STEEL TO BE MADE ABOUT A PIN OF THE MINIMAL DIAMETER ALLOWED BY THE STANDARD SPECIFICATIONS.

THE CONTRACTOR IS RESPONSIBLE FOR CHECKING THE ABOVE REINFORCING STEEL QUANTITIES AND LENGTHS PRIOR TO ORDERING DELIVERY OF STEEL.

STEEL REINFORCEMENT WITH BAR DESIGNATIONS BEGINNING WITH THE LETTER "E" WILL BE EPOXY COATED.



**Board of County Road Commissioners
Of Allegan County**

1308 LINCOLN ROAD
ALLEGAN, MICHIGAN 49010-9762
www.alleganroads.org FAX (269) 673-5922
TELEPHONE (269) 673-2184

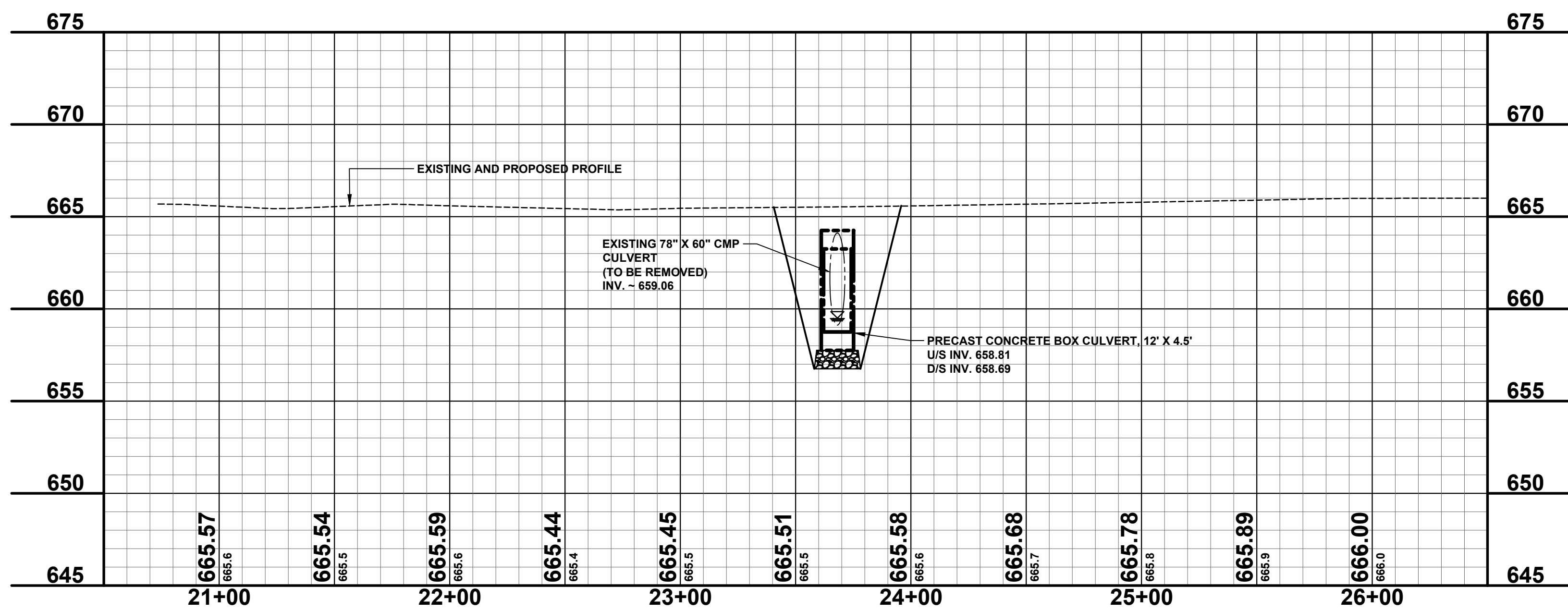
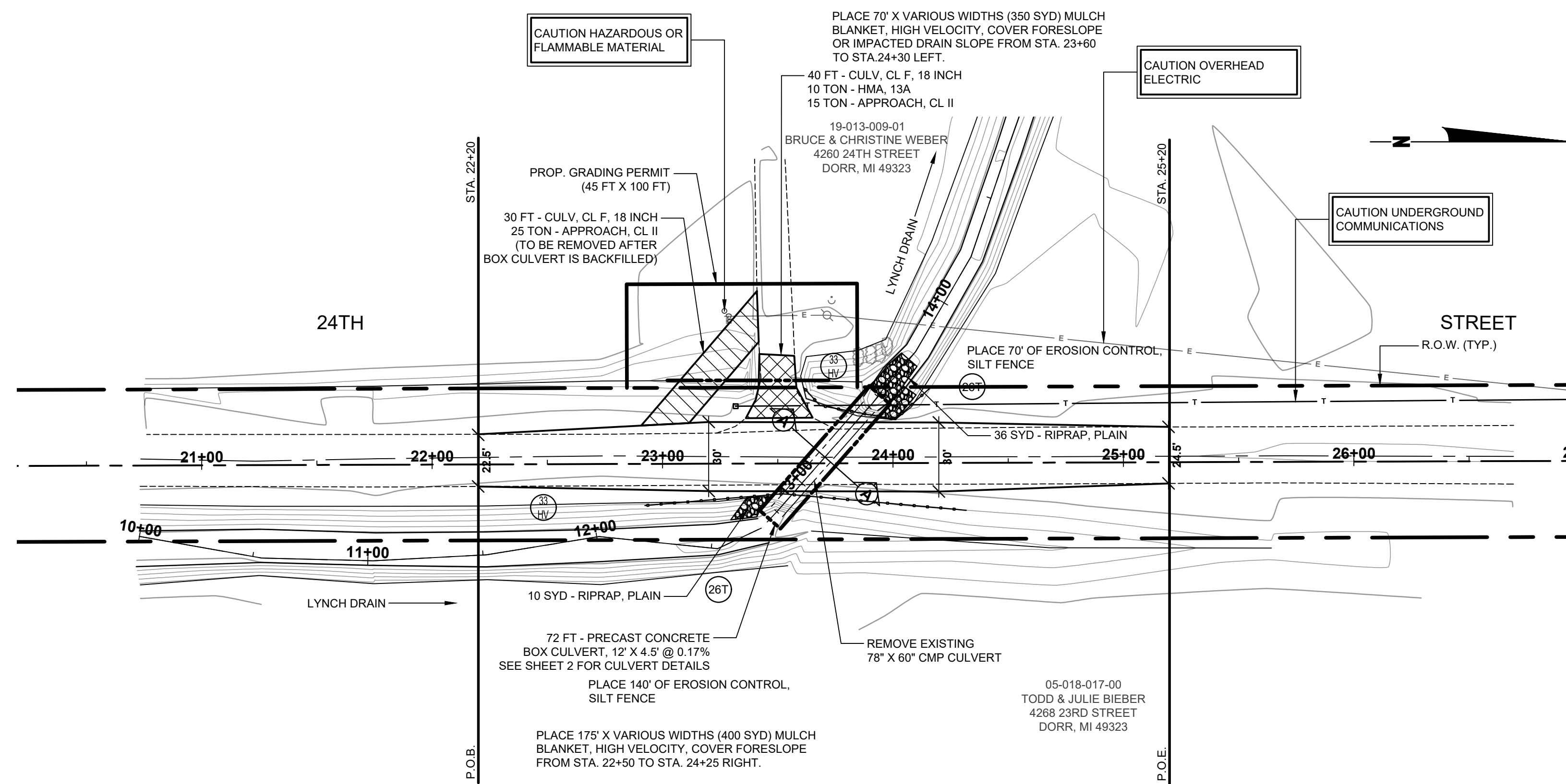
REVISIONS	1	2	3	4	5	6	7

24TH STREET CULVERT REPLACEMENT
SALEM/DORR TOWNSHIP - 1,370 FT NORTH OF 142ND AVENUE

TYPICAL SECTIONS, DETAILS, & NOTES

DRAWN BY: RPB
REVIEWED BY: RPB
DATE: SEPTEMBER, 2022
SCALE: AS NOTED

LH 400077 2



SOIL EROSION & SEDIMENTATION CONTROL NOTES

- ALL CONSTRUCTION METHODS WILL BE DONE IN COMPLIANCE WITH THE MICHIGAN SOIL EROSION AND SEDIMENTATION CONTROL ACT. THE CONTRACTOR WILL BE RESPONSIBLE FOR OBTAINING A "SOIL EROSION PERMIT" FROM THE COUNTY AND/OR A "PERMIT BY RULE/NOTICE OF COVERAGE" FROM THE MDEQ PRIOR TO START OF CONSTRUCTION. THE CONTRACTOR WILL BE RESPONSIBLE FOR COMPLYING WITH ALL REQUIREMENTS OF THE COUNTY "SOIL EROSION PERMIT" AND FOR ALL CERTIFIED STORM WATER INSPECTION SERVICE REQUIRED BY THE "PERMIT BY RULE" EROSION CONTROL MEASURES SHOWN ON THE PLANS ARE THE MINIMUM REQUIREMENTS AND WILL NOT RELIEVE THE CONTRACTOR'S RESPONSIBILITY FOR PROVIDING ALL REQUIRED EROSION CONTROL MEASURES.
 - AVOID UNNECESSARY DISTURBING OR REMOVING OF EXISTING VEGETATED TOPSOIL OR EARTH COVER, THESE COVER AREAS ACT AS SEDIMENT FILTERS.
 - ALL TEMPORARY SOIL EROSION PROTECTION WILL REMAIN IN PLACE UNTIL REMOVAL IS REQUIRED FOR FINAL CLEAN UP AND APPROVAL.
 - GEOTEXTILE SILT FENCE WILL BE INSTALLED AS REQUIRED WHEN CROSSING CREEKS OR WHEN ADJACENT TO WETLANDS OR SURFACE WATER BODIES TO PREVENT SILTATION AND ELSEWHERE AS DIRECTED BY THE ENGINEER. SEEDING AND/OR SODDING WILL BE INSTALLED ON CREEK BANKS IMMEDIATELY AFTER CONSTRUCTION TO PREVENT EROSION.
 - MAINTENANCE, CLEANING, AND REMOVAL OF THE VARIOUS SEDIMENT CONTROL MEASURES WILL BE INCLUDED IN THE VARIOUS EROSION CONTROL ITEMS.
 - SOIL TYPE LOCATIONS ARE APPROXIMATED FROM THE UNITED STATES DEPARTMENT OF AGRICULTURE'S WEB SOIL SURVEY MAPS. DETAILED PROPERTIES FOR EACH SOIL TYPE CAN BE FOUND ON THEIR WEBSITE: WEB.SOILSURVEY.NRCS.USDA.GOV
 - TEMPORARY EROSION CONTROL MEASURES WILL NOT BE MANDATORY IF STORMWATER IS DETERMINED TO BE TOPOGRAPHICALLY INCAPABLE OF LEAVING SITE.
- # NUMBER IN CIRCLE REFERS TO NUMBERED DETAILS ON MDOT STANDARD PLAN R-86 SERIES, SOIL EROSION & SEDIMENTATION CONTROL MEASURES. "P" DENOTES PERMANENT MEASURE AND "T" DENOTES TEMPORARY MEASURE. SOIL EROSION CONTROL PLANS DENOTE MINIMUM EROSION MEASURES REQUIRED AS DESCRIBED BELOW.

STAGING NOTES

- INSTALL TEMPORARY EROSION CONTROL MEASURES.
- CONSTRUCT THE TEMPORARY CHANNEL WITH A 6A STONE PILE AT EACH END AS A PLUG. AFTER LINING THE CHANNEL WITH GEOTEXTILE, OPEN THE DOWNSTREAM PLUG, ALLOW THE WATER TO EQUALIZE, AND THEN REMOVE THE UPSTREAM PLUG.
- REMOVE THE EXISTING 78" X 60" CMP CULVERT.
- INSTALL THE 12" X 4.5' PRECAST CONCRETE BOX CULVERT.
- OPEN THE CHANNEL FROM THE DOWN STREAM END AND ALLOW THE WATER TO EQUALIZE. OPEN THE UPSTREAM SIDE OF THE NEW CHANNEL AND PLUG THE TEMPORARY CHANNEL.
- BACKFILL THE TEMPORARY CHANNEL AND PRECAST CONCRETE BOX.
- INSTALL PERMANENT SOIL EROSION CONTROL MEASURES.

REVISIONS	
1	
2	
3	
4	
5	
6	
7	

DRAWN BY:
REVIEWED BY: RPB
DATE: SEPTEMBER, 2022
SCALE: 1" = 40'H, 5'V