

ALLEGAN COUNTY ROAD COMMISSION

34TH STREET RECONSTRUCTION PROJECT 140TH AVENUE NORTH 0.5 MILES SALEM TOWNSHIP

NOTES

EXCEPT WHERE OTHERWISE INDICATED ON THESE PLANS OR IN THE PROPOSAL AND SUPPLEMENTAL SPECIFICATIONS CONTAINED THEREIN, ALL MATERIALS AND WORKMANSHIP SHALL BE IN ACCORDANCE WITH THE 2020 MICHIGAN DEPARTMENT OF TRANSPORTATION STANDARD SPECIFICATIONS FOR CONSTRUCTION.

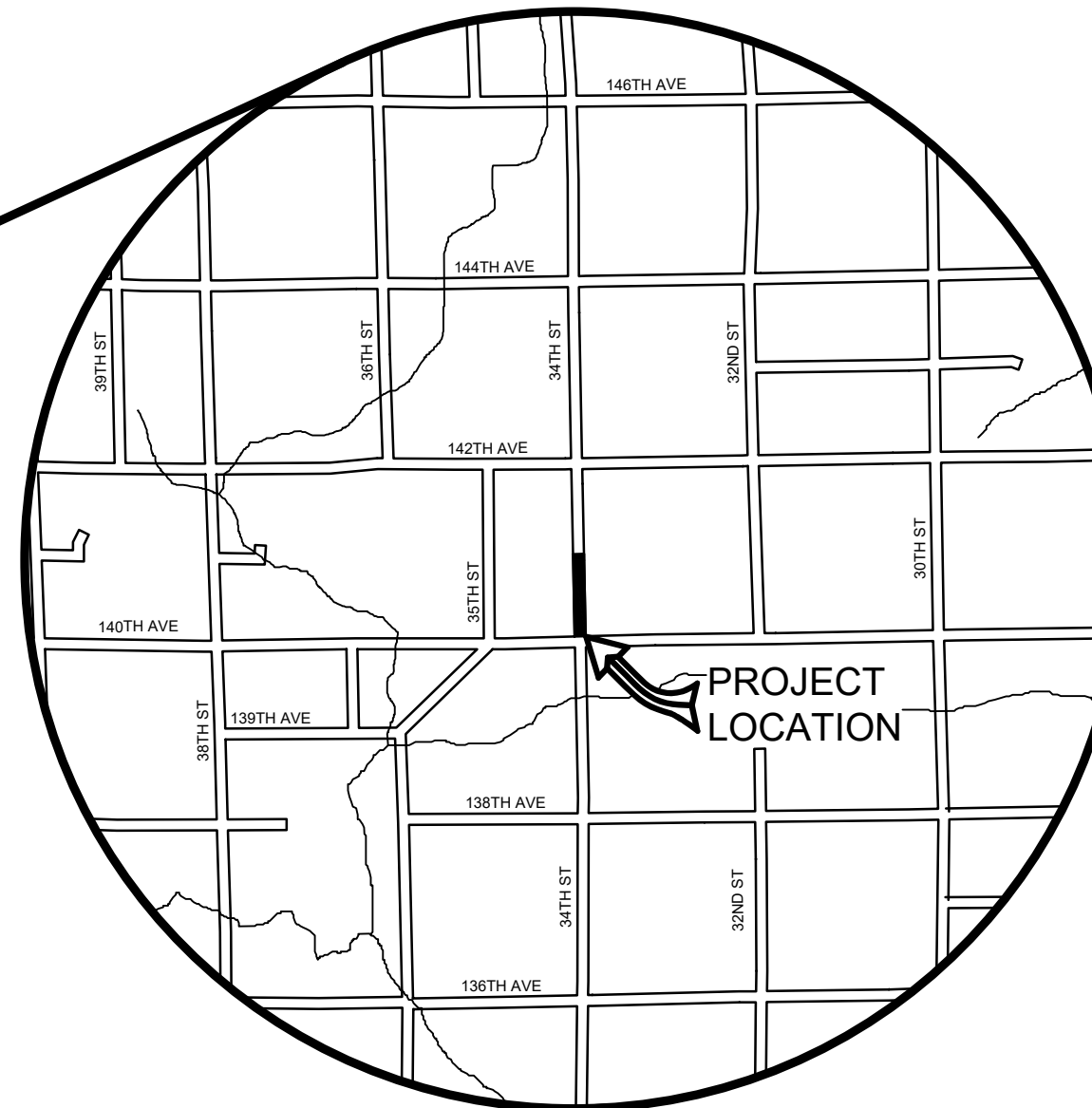
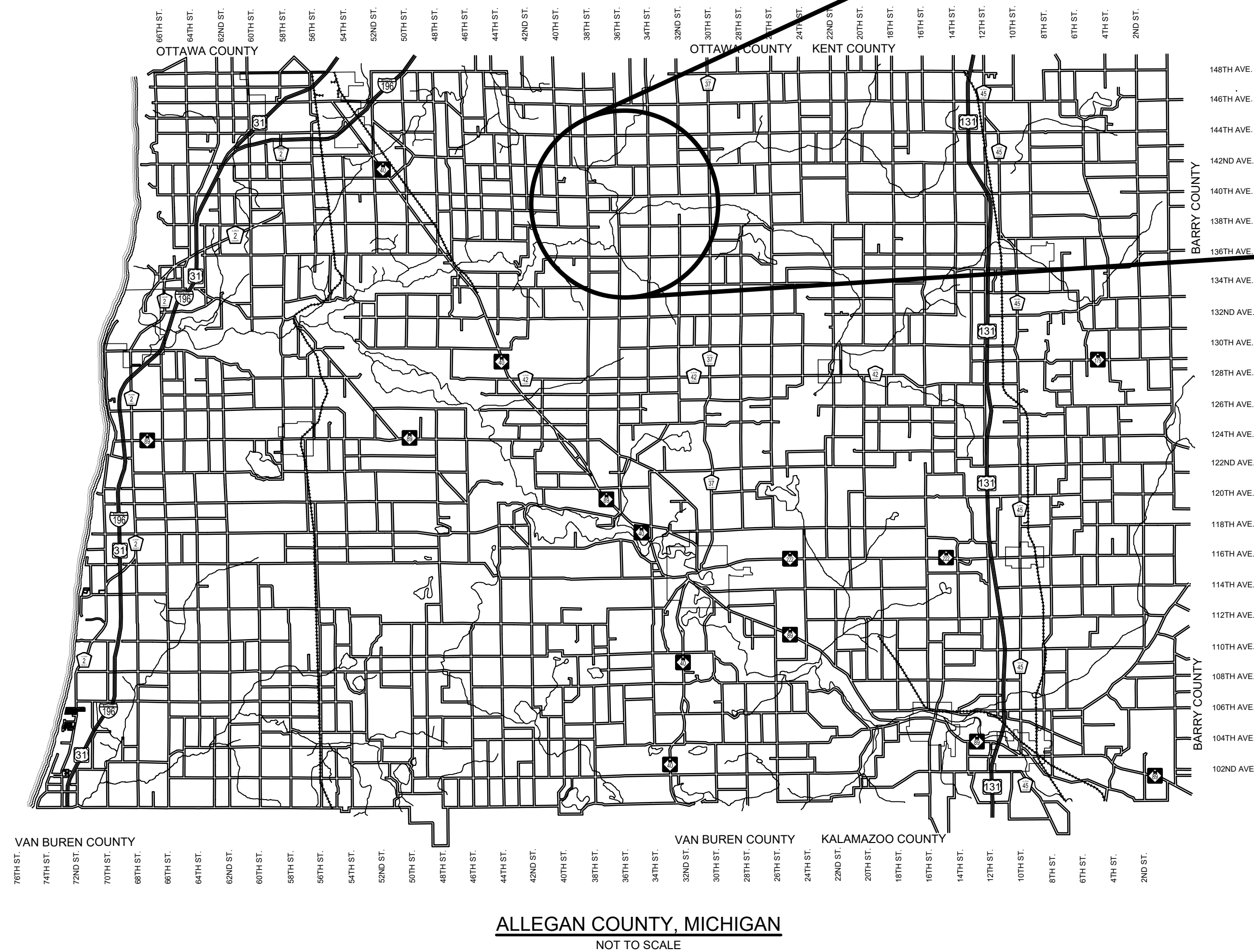
THE PLACING OF PAVEMENT MARKINGS AND TRAFFIC CONTROL SIGNS SHALL BE DONE IN ACCORDANCE WITH THE 2011 MICHIGAN MANUAL OF UNIFORM TRAFFIC CONTROL DEVICES AS AMENDED.

THE IMPROVEMENTS COVERED BY THESE PLANS ARE IN ACCORDANCE WITH THE AMERICAN ASSOCIATION OF STATE HIGHWAY AND TRANSPORTATION OFFICIALS, 2011 EDITION, A POLICY ON GEOMETRIC DESIGN OF HIGHWAYS AND STREETS AND WITH THE GUIDELINES FOR GEOMETRIC DESIGN OF VERY LOW-VOLUME LOCAL ROADS (ADT<400), 1ST EDITION.

THE CONTRACTOR SHALL DIAL MISS DIG @ 811 FOR PROTECTION OF UNDER GROUND UTILITIES AND IN CONFORMANCE WITH PUBLIC ACT 174 OF 2013 A MINIMUM OF THREE FULL WORKING DAYS, EXCLUDING SATURDAYS, SUNDAYS AND HOLIDAYS PRIOR TO BEGINNING EACH EXCAVATION IN AREAS WHERE PUBLIC UTILITIES HAVE NOT BEEN PREVIOUSLY LOCATED. MEMBERS WILL BE ROUTINELY NOTIFIED. THIS DOES NOT RELIEVE THE CONTRACTOR OF THE RESPONSIBILITY OF NOTIFYING UTILITY OWNERS WHO MAY NOT BE A PART OF THE "MISS DIG" ALERT SYSTEM.

INDEX OF PLANS

- 1 - COVER SHEET
- 2 - TYPICAL SECTIONS, DETAILS, & NOTES
- 3 - PLAN AND PROFILE - STA. 10+00 TO STA. 30+00
- 4 - PLAN AND PROFILE - STA. 20+00 TO STA. 30+00
- 5 - PLAN AND PROFILE - STA. 30+00 TO STA. 40+00 & CUL-DE-SAC
- 6 - CROSS SECTIONS - STA. 10+25 TO STA. 19+00
- 7 - CROSS SECTIONS - STA. 20+00 TO STA. 27+00
- 8 - CROSS SECTIONS - STA. 28+00 TO STA. 33+00
- 9 - CROSS SECTIONS - CUL-DE-SAC
- 10 - CROSS SECTIONS - CUL-DE-SAC
- 11 - SOIL EROSION & SEDIMENTATION CONTROL PLAN



UTILITY CONTACTS

ELECTRIC
GREAT LAKES ENERGY
1049 133RD AVENUE
WAYLAND, MI 49348
269-792-0532
MR. JEFF HICKS
jhicks@glenergy.com

TELEPHONE
FRONTIER
601 N. U.S. 131
THREE RIVERS, MI 49093
269-370-4046
MR. LANCE WEBLEY
lance.webley@ftr.com

AT&T
955 36TH STREET
GRAND RAPIDS, MI 49508
616-246-7238
MR. BRAD DYKENS
bd1636@att.com

GAS
MICHIGAN GAS UTILITIES
1708 EATON DRIVE
GRAND HAVEN, MI 49417
616-844-7514
MR. SETH PURUCKER
seth.purucker@michigangasutilities.com

MISS DIG 811

Board of County Road Commissioners
Of Allegan County

1308 LINCOLN ROAD
ALLEGAN, MICHIGAN 49010-9762
www.alleganroads.org
TELEPHONE (269) 673-2184 FAX (269) 673-5922

REVISIONS						
No.	Date	Description	By	Check	Appr.	Scale
1						
2						
3						
4						
5						
6						
7						

34TH STREET RECONSTRUCTION PROJECT
SALEM TOWNSHIP - 140TH AVENUE NORTH 0.5 MILES

COVER SHEET

CONTRACT FOR ROAD IMPROVEMENTS
0.5 MILES OF ROADWAY RECONSTRUCTION INCLUDING CLEARING, GRADE ESTABLISHMENT, SAND SUBBASE, AGGREGATE BASE, CULVERT REPLACEMENTS, AND RESTORATION ON 34TH STREET FROM 140TH AVENUE NORTH 0.5 MILES IN SALEM TOWNSHIP, ALLEGAN COUNTY.

PREPARED UNDER THE SUPERVISION OF:

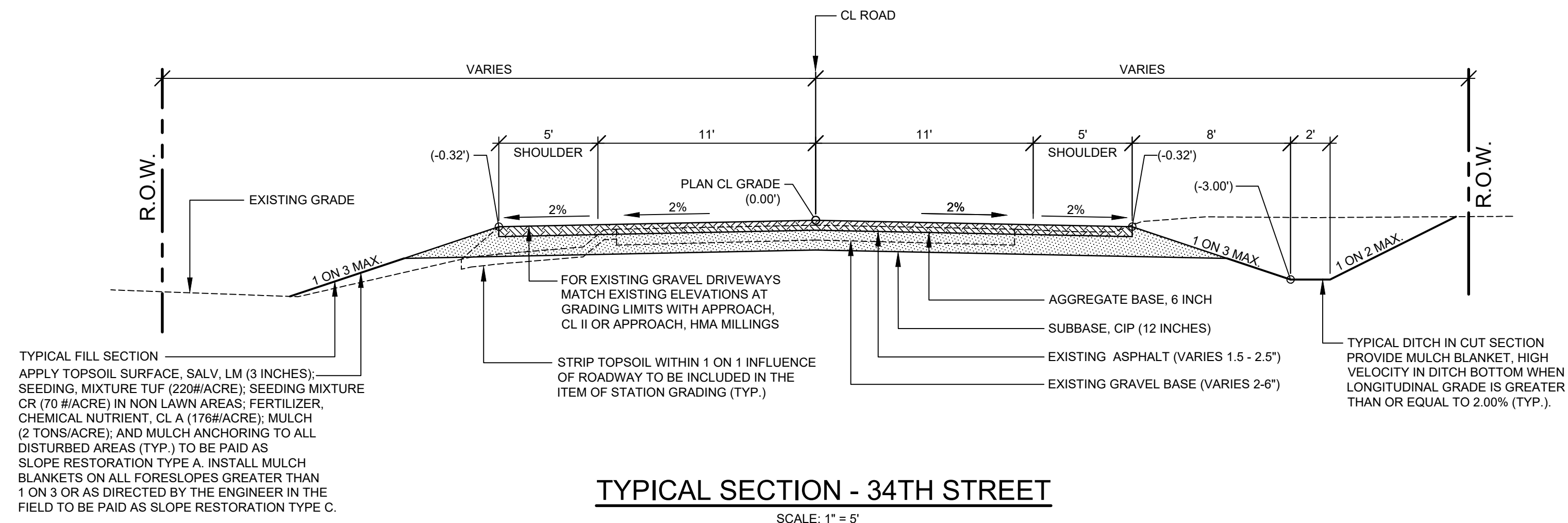


Addison Carter Wolf
April 19, 2023

DRAWN BY: ACW
REVIEWED BY: RK
DATE: MARCH 2023
SCALE: NONE

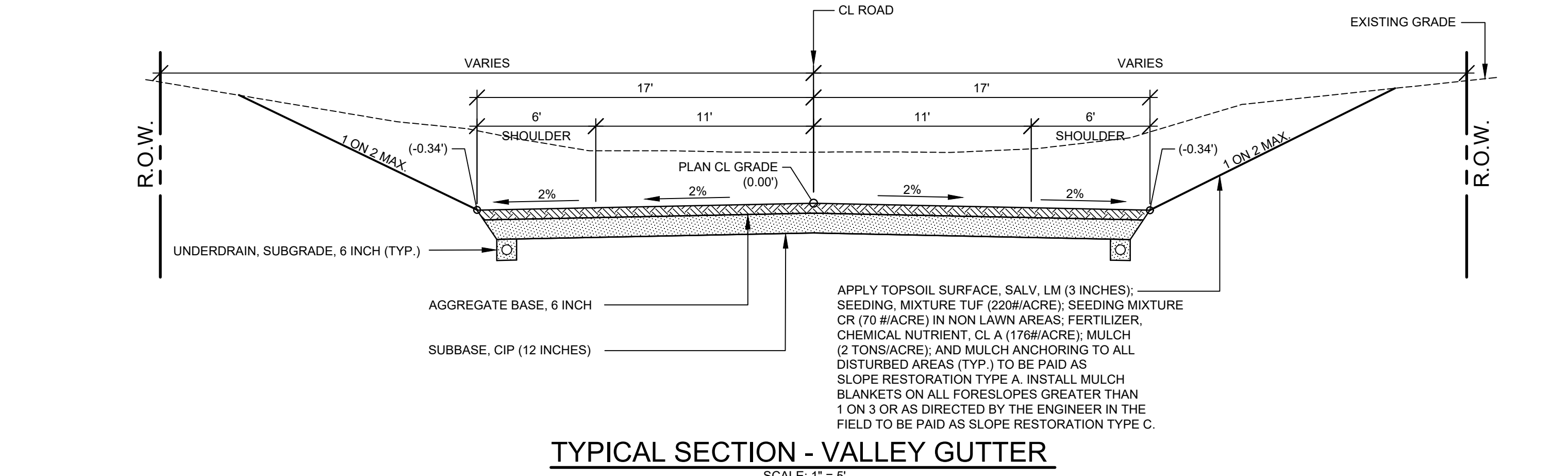
ADDISON C. WOLF
REGISTERED PROFESSIONAL ENGINEER No. 6201310174

LH 4065 1



TYPICAL SECTION - 34TH STREET

SCALE: 1" = 5'
THIS SECTION APPLIES TO:
P.O.B TO STA. 33+50



TYPICAL SECTION - VALLEY GUTTER

SCALE: 1" = 5'
THIS SECTION APPLIES TO:
STA. 26+75 TO 33+17 LEFT

PROJECT NOTES

THE "2020 STANDARD SPECIFICATIONS FOR CONSTRUCTION" AND "STANDARD PLANS" BY THE MICHIGAN DEPARTMENT OF TRANSPORTATION (MDOT) ARE HEREBY INCORPORATED INTO THESE CONTRACT DOCUMENTS. COPIES OF THESE STANDARDS ARE AVAILABLE FOR INSPECTION AT THE OFFICE OF THE ENGINEER.

THE CONTRACTOR WILL BE RESPONSIBLE FOR CONTACTING THE ALLEGAN COUNTY ROAD COMMISSION TO NOTIFY THEM THAT WORK IS COMMENCING.

THE CONTRACTOR SHOULD NOTE THAT STATION GRADING WILL INCLUDE THE REMOVAL OF FENCES, CULVERTS, BRUSH, TREES SMALLER THAN 8", CONCRETE FOUNDATIONS, AND MISCELLANEOUS ITEMS AS REQUIRED AND WILL ALSO INCLUDE ALL EARTH EXCAVATION, EMBANKMENT, AND ALL OTHER OPERATIONS NECESSARY TO DEVELOP THE DESIRED CROSS SECTION. ALL TOPSOIL AND OTHER UNSUITABLE MATERIAL LOCATED BENEATH THE PROPOSED PAVEMENT SECTION WILL BE REMOVED TO THE SUBGRADE ELEVATION AS PART OF STATION GRADING. ALL TOPSOIL REMOVED MAY BE STOCKPILED AND REUSED AS TOPSOIL SURFACE, SALV, LM.

ALL FILL FOR THIS PROJECT MUST BE OBTAINED AND FURNISHED BY THE CONTRACTOR. ALL REQUIRED FILL SHALL BE SELECTED EXCAVATED MATERIAL FROM THE SITE APPROVED BY THE ENGINEER, OR MDOT CLASS II GRANULAR MATERIAL FROM BORROW. EXCESS FILL WILL BE REMOVED FROM SITE BY THE CONTRACTOR. NO BORROW OR SOIL REMOVAL ARRANGEMENTS HAVE BEEN PREARRANGED FOR THIS PROJECT AND WILL BE THE TOTAL RESPONSIBILITY OF THE CONTRACTOR.

THE SOIL BORINGS WERE TAKEN BY GREAT LAKES DRILLING COMPANY, P.O. BOX 51, ALLEGAN, MI 49010 ON SEPTEMBER 6, 2016. THE TEST BORINGS REPRESENT POINT INFORMATION AND MAY NOT HAVE ENCOUNTERED ALL THE TYPES AND MATERIALS WHICH ARE PRESENT AT THE SITE. THESE BORING LOGS DO NOT CONSTITUTE A GUARANTEE OF THE SOIL OR GROUNDWATER CONDITIONS, OR THAT THE TEST BORINGS ARE AN EXACT REPRESENTATION OF THE SOIL OR GROUNDWATER CONDITIONS AT ALL POINTS ON THE SITE.

SEE PLAN AND PROFILE SHEETS FOR SOIL BORING DATA.

DRIVE REPLACEMENT WILL BE AS SHOWN ON THE PLANS OR AS DIRECTED BY THE ENGINEER IN THE FIELD.

THE ITEM OF SUBBASE, CIP WILL BE PAID FOR AT PLAN QUANTITY EXCEPT IN THE CASE OF A DESIGN CHANGE OR DEMONSTRATED ERROR.

AS PART OF THIS PROJECT THE CONTRACTOR WILL COORDINATE WITH THE ALLEGAN COUNTY ROAD COMMISSION TO PRESERVE AND RESET ALL GOVERNMENT CORNERS WITHIN THE PROJECT LIMITS.

CONTRACTOR WILL RELOCATE ALL MAILBOXES TO A TEMPORARY CENTRAL LOCATION APPROVED BY THE POSTAL SERVICE PRIOR TO CONSTRUCTION. CONTRACTOR SHALL INSTALL A 1" x 3" STAKE WITH THE RESPECTIVE PROPERTY ADDRESS WRITTEN ON IT IN THE FRONT YARD OF EACH RESIDENCE TO ASSIST WITH IDENTIFICATION FOR EMERGENCY VEHICLES. PAYMENT FOR RELOCATION WILL BE INCLUDED IN THE ITEM OF PROJECT CLEANUP. AT THE COMPLETION OF THE PROJECT SAID MAILBOXES SHALL BE RESET AT THEIR APPROPRIATE LOCATIONS.

ALL DISTURBED AREAS NOT TO BE PAVED WILL BE RESTORED WITH TOPSOIL SURFACE, SALV, LM (3 INCHES), MDOT SEED MIXTURE TUF (220#/ACRE); SEEDING MIXTURE CR (70 #/ACRE) IN NON LAWN AREAS; FERTILIZER, CHEMICAL NUTRIENT, CL A (176#/ACRE); AND MULCH AND MULCH ANCHORING (2 TON/ACRE); TO BE PAID AS SLOPE RESTORATION, TYPE A. SEE SECS PLAN FOR AREAS TO USE HIGH VELOCITY MULCH BLANKET, TO BE PAID AS SLOPE RESTORATION TYPE C.

ADEQUATE DUST CONTROL MEASURES WILL BE MAINTAINED BY THE CONTRACTOR AS DIRECTED BY THE ENGINEER IN THE FIELD, TO BE INCLUDED IN THE VARIOUS ITEMS OF WORK.

MULCH BLANKET, HIGH VELOCITY WILL BE PLACED ON THE BOTTOM OF ALL DITCHES WHEN THE LONGITUDINAL GRADE IS GREATER THAN OR EQUAL TO 2.00% UNLESS OTHERWISE NOTED, OR AS DIRECTED BY THE ENGINEER IN THE FIELD TO BE PAID AS SLOPE RESTORATION TYPE C.

WHEN FIELD DRAIN TILES ARE ENCOUNTERED IN THE EXISTING DITCHES, THE CONTRACTOR WILL EXTEND THEM AS REQUIRED WITH UNDERDRAIN, SUBGRADE 4" OR 6" AND ADJUST THE DITCH GRADES AS NECESSARY TO PROVIDE POSITIVE DRAINAGE AS DIRECTED BY THE ENGINEER IN THE FIELD. THE COST OF THE CONNECTION WILL BE INCLUDED IN THE NEW PIPE ITEM. IF THE ENGINEER DETERMINES THAT AN EXISTING TILE IS TOO LONG THE CONTRACTOR WILL REMOVE THE TILE AS NECESSARY, TO BE INCLUDED IN THE ITEM OF STATION GRADING.

THE CONTRACTOR IS RESPONSIBLE FOR MAINTAINING EXISTING DRAINAGE PATTERNS, AND WILL RESOLVE ANY DRAINAGE PROBLEMS ON ADJACENT PROPERTIES WHICH MAY RESULT FROM THE CONTRACTOR'S ACTIVITIES.

DATUM REFERS TO NAVD88 DATUM.

DIMENSIONS TAKE PRECEDENCE OVER SCALE. CONTRACTOR TO VERIFY ALL DIMENSIONS IN FIELD.

UTILITY NOTES

FOR PROTECTION OF UNDERGROUND UTILITIES AND IN CONFORMANCE WITH PUBLIC ACT 174 OF 2013, THE CONTRACTOR WILL CONTACT "MISS DIG" AT 811, A MINIMUM OF 72 HOURS, EXCLUDING SATURDAYS, SUNDAYS, AND HOLIDAYS, PRIOR TO BEGINNING EACH EXCAVATION IN AREAS WHERE PUBLIC UTILITIES HAVE NOT BEEN PREVIOUSLY LOCATED. MEMBERS WILL BE ROUTINELY NOTIFIED. THIS DOES NOT RELIEVE THE CONTRACTOR OF THE RESPONSIBILITY OF NOTIFYING UTILITY OWNERS WHO MAY NOT BE A PART OF THE "MISS DIG" ALERT SYSTEM.

THE CONTRACTOR WILL LOCATE ALL ACTIVE UNDERGROUND UTILITIES PRIOR TO STARTING WORK AND WILL CONDUCT HIS OPERATIONS IN A MANNER AS TO ENSURE THAT THOSE UTILITIES NOT REQUIRING RELOCATION WILL NOT BE DISTURBED.

PRELIMINARY UTILITY COORDINATION WAS PERFORMED AND ALL UTILITIES HAVE VERIFIED LOCATIONS.

FRONTIER COMMUNICATIONS HAS FACILITIES ALONG THE PROJECT AND WILL BE ABANDONING THEIR LINE.

GREAT LAKES ENERGY HAS BEGUN COORDINATION TO RELOCATE UTILITY POLE AT STATION 29+05 LT.

MICHIGAN GAS UTILITIES HAS A GAS MAIN ALONG 140TH AVENUE THAT CROSSES UNDER 34TH STREET. CAUTIONARY MEASURES SHALL BE TAKEN WHILE WORKING IN THIS AREA.

MISCELLANEOUS QUANTITIES

DESCRIPTION	QUANTITY	UNIT
SUBGRADE UNDERCUTTING, TYPE II	500	CYD
AGGREGATE, 6A	50	TON
GEOTEXTILE, STABILIZATION	1,000	SYD
RIPRAP, PLAIN	100	SYD
EROSION CONTROL, SILT FENCE	2,000	FT
EROSION CONTROL, CHECK DAM	300	FT
APPROACH, CL II	60	TON
APPROACH, HMA MILLINGS	50	TON
CULV, CL E, CONC, 18 INCH	48	FT
CULV END SECT, CONC, 18 INCH	2	EA
CULV, CL F, 12 INCH	40	FT
CULV, CL F, 18 INCH	60	FT

**Board of County Road Commissioners
Of Allegan County**
1308 LINCOLN ROAD
ALLEGAN, MICHIGAN 49010-9762
www.alleganroads.org
TELEPHONE (269) 673-2184 FAX (269) 673-5922

REVISIONS
1
2
3
4
5
6
7

34TH STREET RECONSTRUCTION PROJECT
SALEM TOWNSHIP - 140TH AVENUE NORTH 0.5 MILES
TYPICAL SECTIONS, DETAILS, & NOTES

DRAWN BY: ACW
REVIEWED BY:
DATE: MARCH 2023
SCALE: AS NOTED

LH 4065 2

SOIL BORINGS

SB #1	0 - 4" BROWN FINE TO MEDIUM SAND AND GRAVEL
	4" - 12" BROWN FINE TO MEDIUM SAND
	12" - 36" BROWN AND BLACK PEATY TOPSOIL
	36" - 120" GRAY SILTY FINE TO MEDIUM SAND
	120" END OF BORING
SB #2	0 - 5" BROWN FINE TO MEDIUM SAND AND GRAVEL
	5" - 24" BROWN FINE TO MEDIUM SAND
	24" - 60" BROWN PEATY TOPSOIL
	60" - 120" BROWN FINE TO MEDIUM SAND
	120" END OF BORING
SB #3	0 - 5" BROWN FINE TO MEDIUM SAND AND GRAVEL
	5" - 36" BROWN FINE TO MEDIUM SAND
	36" - 78" BROWN PEATY TOPSOIL
	78" - 120" BROWN SILTY FINE TO MEDIUM SAND
	120" END OF BORING

10+35 TELE RISER BOX 30.1'
RELOCATE - 10+35 SIGN, STOP 16.0'

10+88 12" DEAD TREE 60.8'

11+87 12" POPULAR 47.7'
11+92 27" MAPLE 30.2'

14+95 9" TREE 33.8'

RELOCATE - 16+08 SIGN, STOP AHEAD 10.2'

03-19-019-019-00
GARETH & ELAINE PRICE
4011 35TH STREET
DORR, MI 49323

03-19-019-020-00
JO ANN BRENNER
2768 142ND AVE
DORR, MI 49323

03-19-020-014-00
STEVEN & DANIELLE BERENS
3361 140TH AVE
WAYLAND, MI 49348

140TH AVENUE

34TH

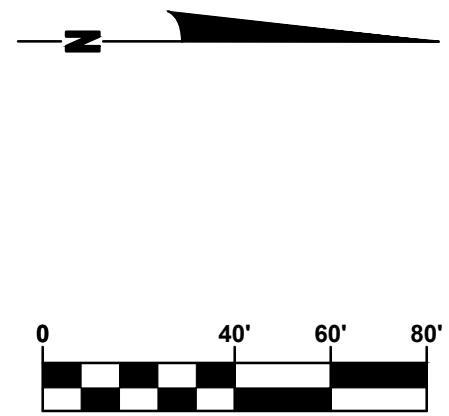
STREET

10+27 GUY WIRE 30.1'
10+40 BM PP W/SIDE 29.6'
10+40 POWER POLE 30.3'

13+23 POWER POLE 30.6'

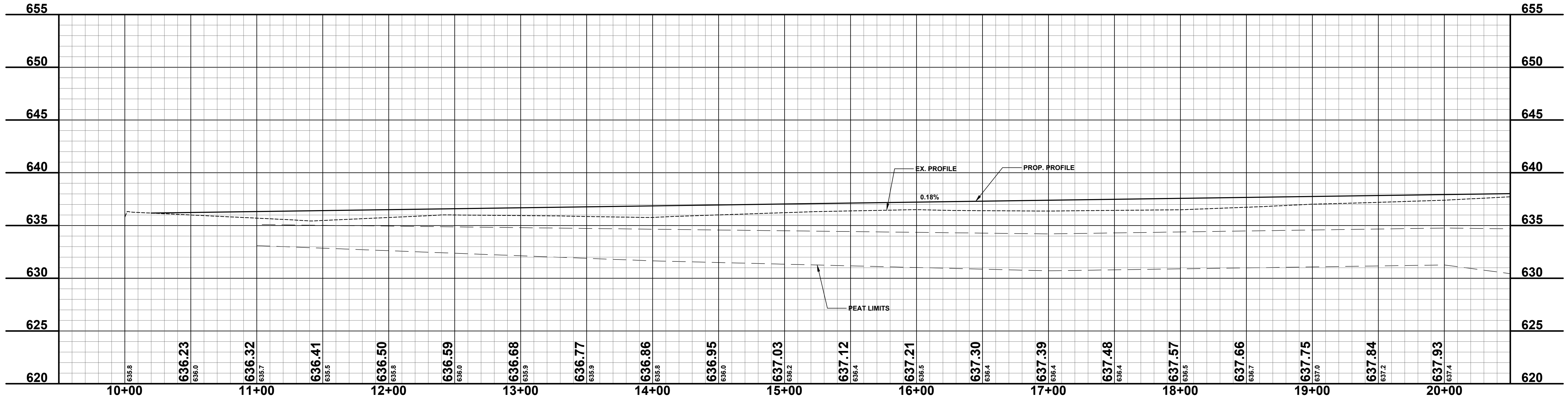
16+12 POWER POLE 30.1'

19+00 POWER POLE 32.1'



LEGEND

- REGRADE EXISTING DRIVE AS REQUIRED AND SURFACE WITH APPROACH, CLASS II TO A DEPTH OF 6" AS DIRECTED BY THE ENGINEER IN THE FIELD, PAID FOR AS APPROACH, CL II BY THE TON.
- SAWCUT AND REMOVE EXISTING HMA PAVEMENT. REGRADE EXISTING DRIVE OR APPROACH AS REQUIRED AND SURFACE WITH APPROACH, CL II; 165#/SYD HMA, 13A (LEVELING); AND 165#/SYD HMA, 13A (TOP). (PAVING UNDER SEPARATE CONTRACT IN THE FUTURE)
- SAWCUT AND REMOVE EXISTING CONCRETE PAVEMENT. REGRADE EXISTING DRIVE AS REQUIRED AND SURFACE WITH APPROACH, CL II; 165#/SYD HMA, 13A (LEVELING); AND 165#/SYD HMA, 13A (TOP). (PAVING UNDER SEPARATE CONTRACT IN THE FUTURE)



**Board of County Road Commissioners
Of Allegan County**
1308 LINCOLN ROAD
ALLEGAN, MICHIGAN 49010-9762
TELEPHONE (269) 673-2184 www.alleganroads.org FAX (269) 673-5922

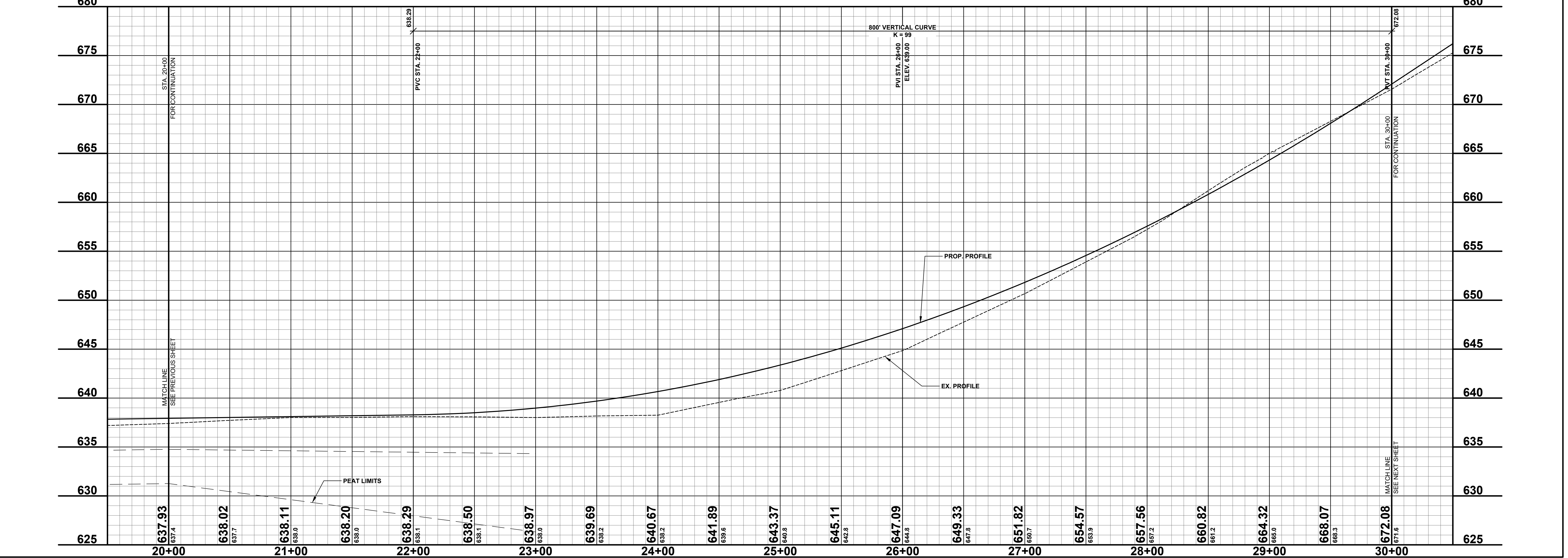
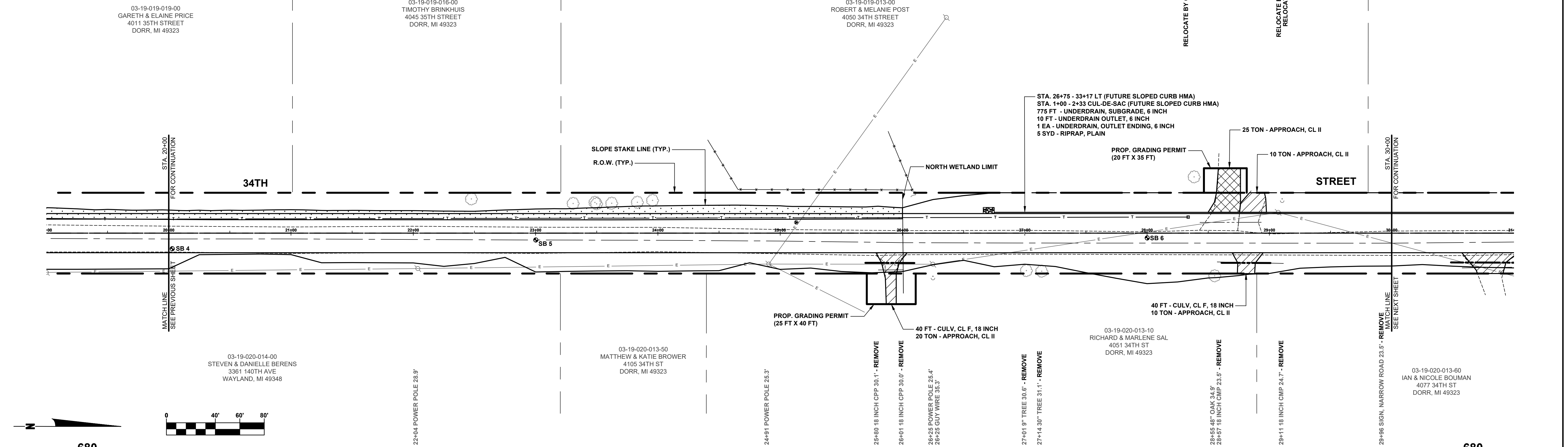
REVISIONS
1
2
3
4
5
6
7

34TH STREET RECONSTRUCTION PROJECT
SALEM TOWNSHIP - 140TH AVENUE NORTH 0.5 MILES
PLAN & PROFILE - STA. 10+00 TO STA. 20+00

DRAWN BY: ACW
REVIEWED BY:
DATE: MARCH 2023
SCALE: 1"= 40'H, 5V

SOIL BORINGS

SB #4	0 - 6" BROWN FINE TO MEDIUM SAND AND GRAVEL
	6" - 30" BROWN FINE TO MEDIUM SAND
	30" - 78" BROWN PEATY TOPSOIL
	78" - 120" BROWN SILTY FINE TO MEDIUM SAND
	120" END OF BORING
SB #5	0 - 6" BROWN FINE TO MEDIUM SAND AND GRAVEL
	6" - 48" BROWN FINE TO MEDIUM SAND
	48" - 144" BROWN PEATY TOPSOIL
	144" - 180" BROWN SILTY FINE TO MEDIUM SAND
	180" END OF BORING
SB #6	0 - 8" BROWN FINE TO MEDIUM SAND AND GRAVEL
	8" - 60" BROWN FINE TO MEDIUM SAND
	60" END OF BORING



**Board of County Road Commissioners
Of Allegan County**
1308 LINCOLN ROAD
ALLEGAN, MICHIGAN 49010-9762
www.alleganroads.org
TELEPHONE (269) 673-2184 FAX (269) 673-5922

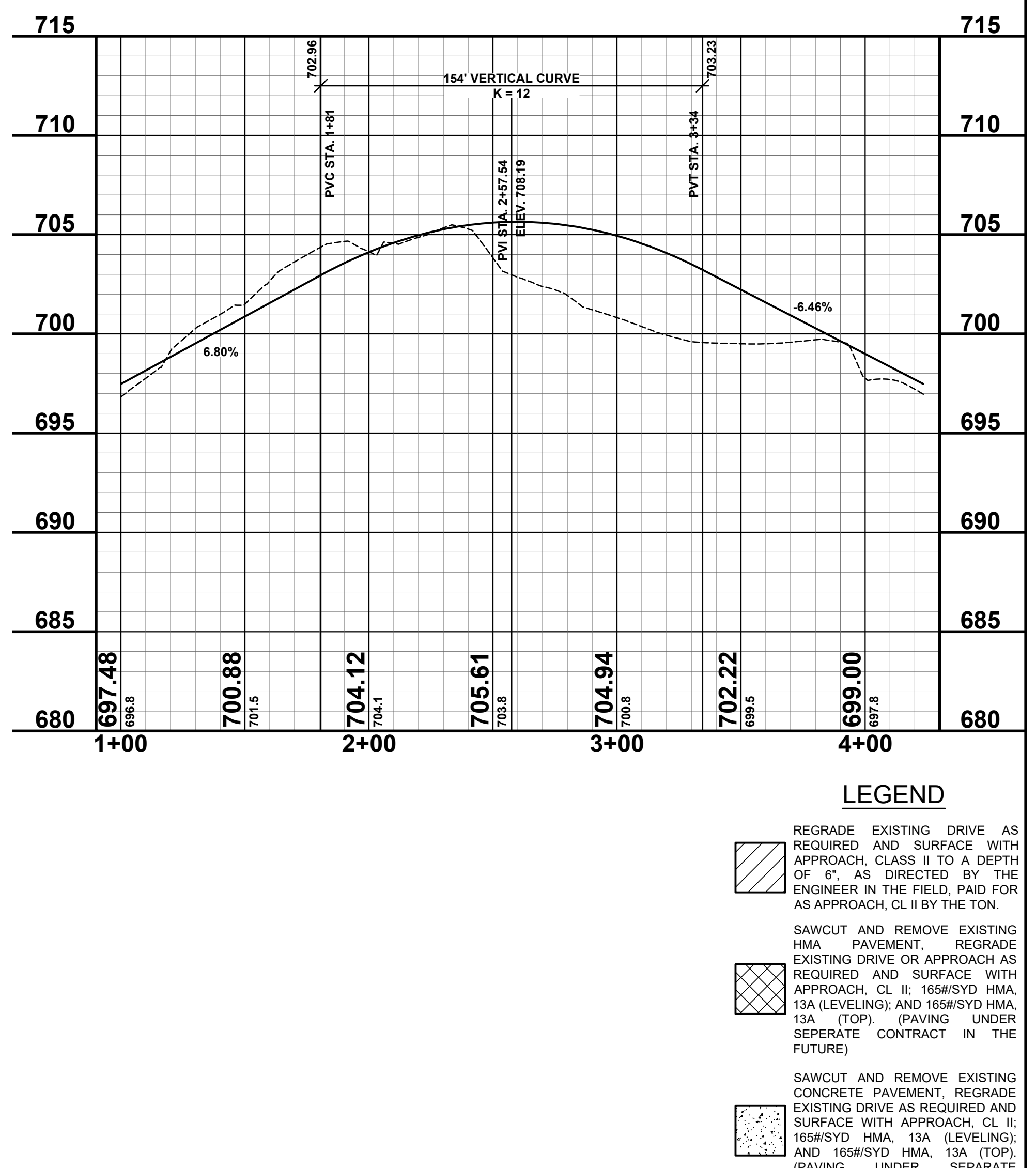
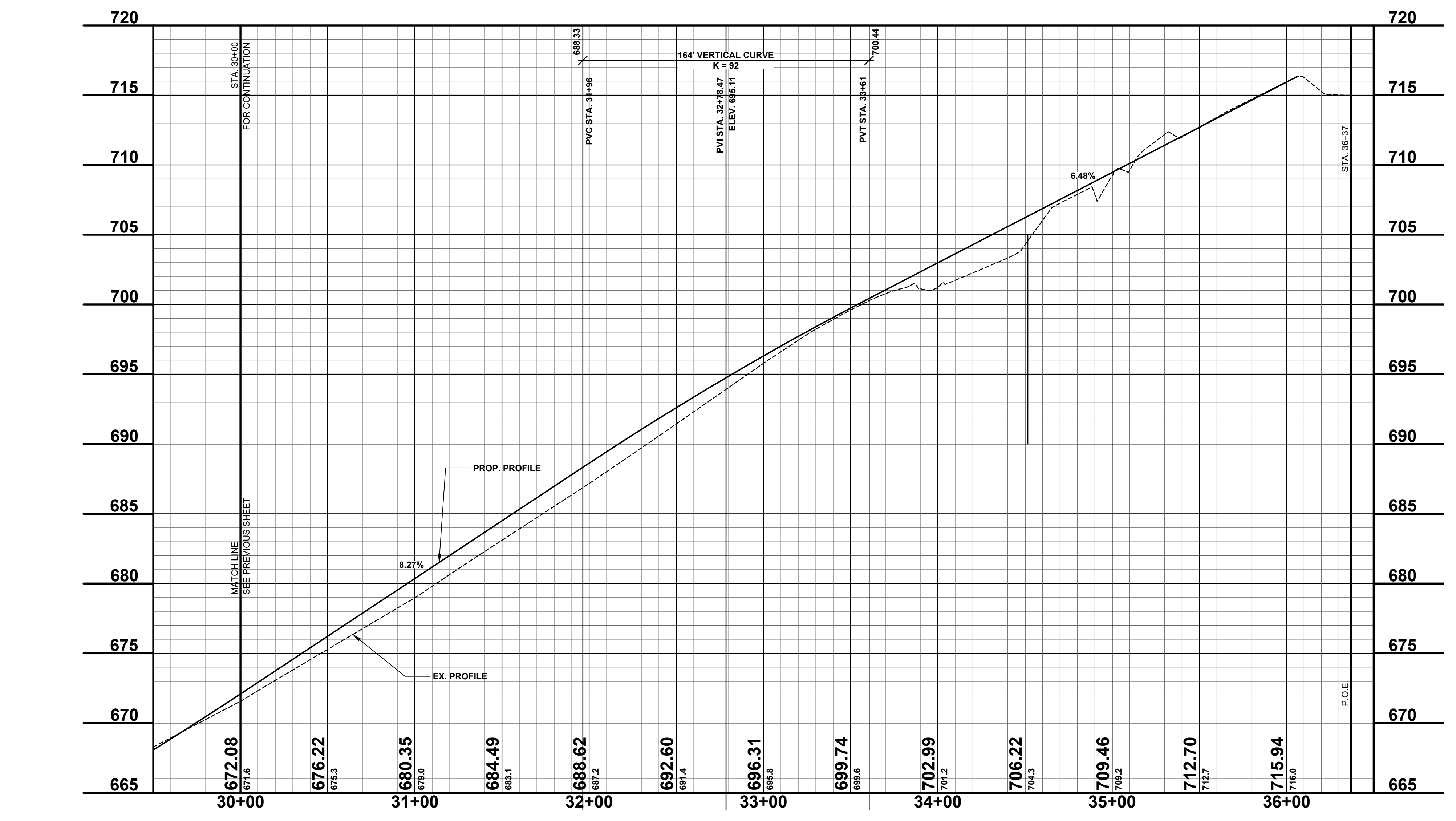
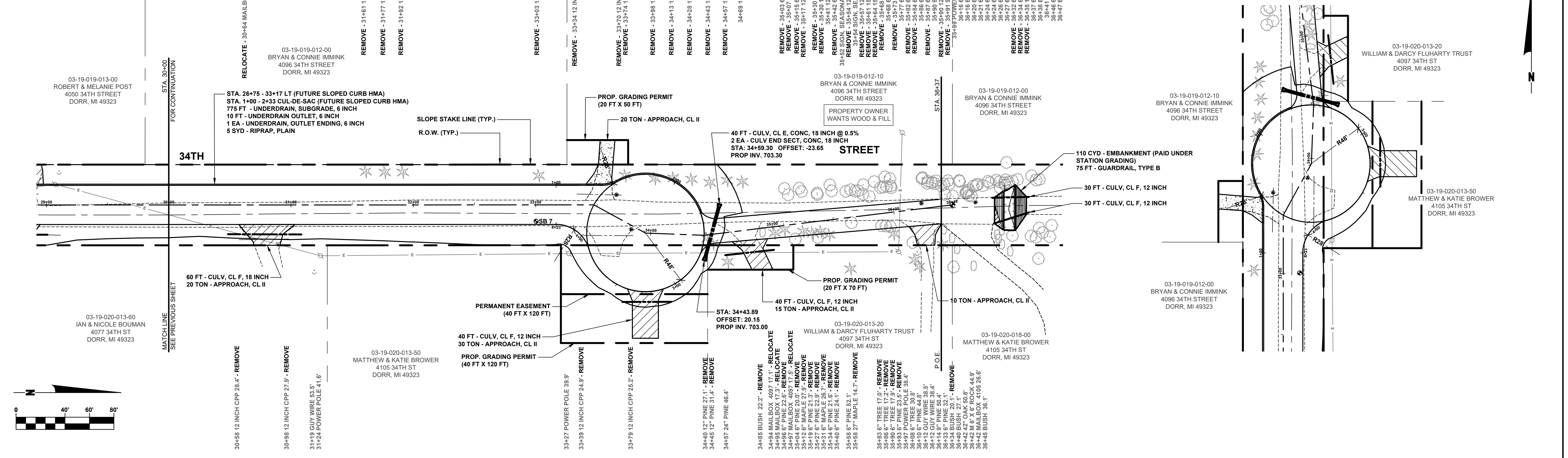
REVISIONS

1	
2	
3	
4	
5	
6	
7	

34TH STREET RECONSTRUCTION PROJECT
SALEM TOWNSHIP - 140TH AVENUE NORTH 0.5 MILES
PLAN & PROFILE - STA. 20+00 TO STA. 30+00

DRAWN BY: ACW
REVIEWED BY:
DATE: MARCH 2023
SCALE: 1" = 40'H, 5'V

SB #7	SOIL BORINGS
0 - 5'	BROWN FINE TO MEDIUM SAND AND GRAVEL
5' - 60'	BROWN FINE TO MEDIUM SAND
60'	END OF BORING



LEGEND

- REGRADE EXISTING DRIVE AS REQUIRED AND SURFACE WITH APPROACH, CLASS II TO A DEPTH OF 6", AS DIRECTED BY THE ENGINEER IN THE FIELD, PAID FOR AS APPROACH, CL II BY THE TON.
- SAWCUT AND REMOVE EXISTING HMA PAVEMENT, REGRADE EXISTING DRIVE OR APPROACH AS REQUIRED AND SURFACE WITH APPROACH, CL II; 165#/SYD HMA, 13A (LEVELING); AND 165#/SYD HMA, 13A (TOP). (PAVING UNDER SEPARATE CONTRACT IN THE FUTURE)
- SAWCUT AND REMOVE EXISTING CONCRETE PAVEMENT, REGRADE EXISTING DRIVE AS REQUIRED AND SURFACE WITH APPROACH, CL II; 165#/SYD HMA, 13A (LEVELING); AND 165#/SYD HMA, 13A (TOP). (PAVING UNDER SEPARATE CONTRACT IN THE FUTURE)

**Board of County Road Commissioners
Of Allegan County**

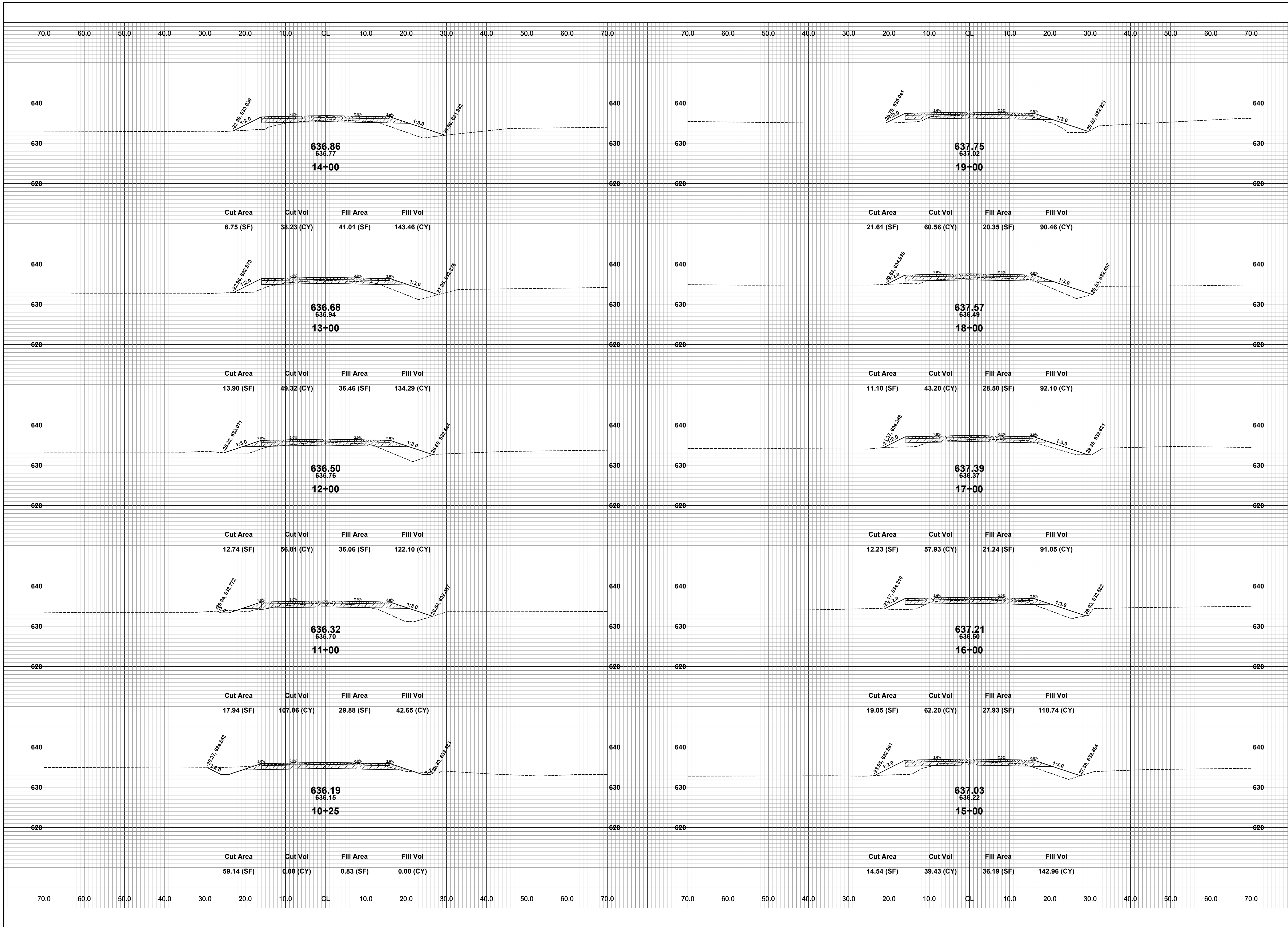
1308 LINCOLN ROAD
ALLEGAN, MICHIGAN 49010-9762
TELEPHONE (269) 673-2184 www.alleganroads.org FAX (269) 673-5922

REVISIONS	
1	
2	
3	
4	
5	
6	
7	

34TH STREET RECONSTRUCTION PROJECT
SALEM TOWNSHIP - 140TH AVENUE NORTH 0.5 MILES

PLAN & PROFILE - STA. 30+00 TO STA. 40+00 & CUL-DE-SAC

DRAWN BY: ACW
REVIEWED BY:
DATE: MARCH 2023
SCALE: 1"= 40', 5V

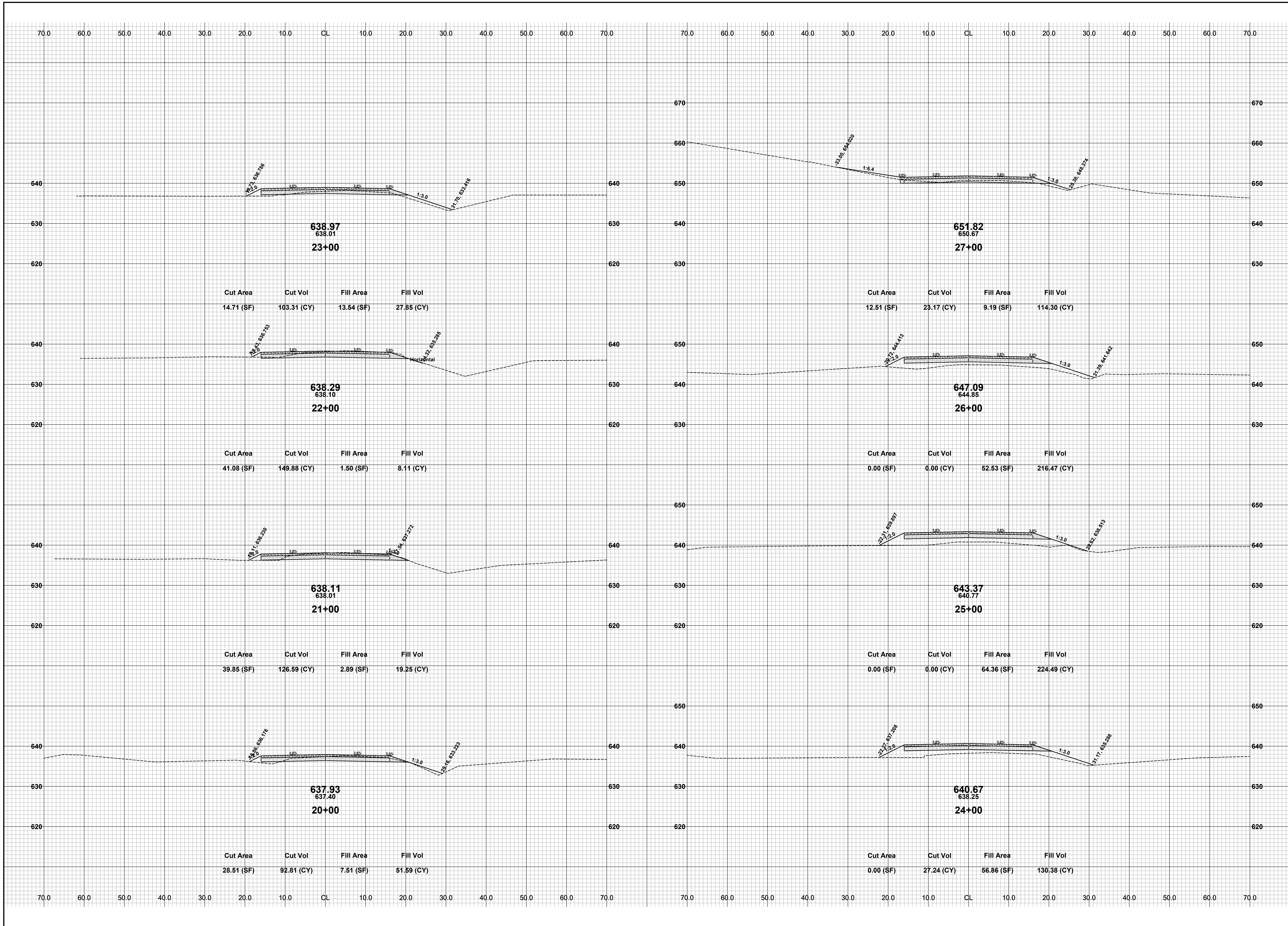


**Board of County Road Commissioners
Of Allegan County**
1308 LINCOLN ROAD
ALLEGAN, MICHIGAN 49010-9762
TELEPHONE (269) 673-2184 www.alleganroads.org FAX (269) 673-5922

REVISIONS	
1	
2	
3	
4	
5	
6	
7	

34TH STREET RECONSTRUCTION PROJECT
SALEM TOWNSHIP - 140TH AVENUE 0.5 MILES NORTH
CROSS SECTIONS - STA. 10+25 TO STA. 19+00

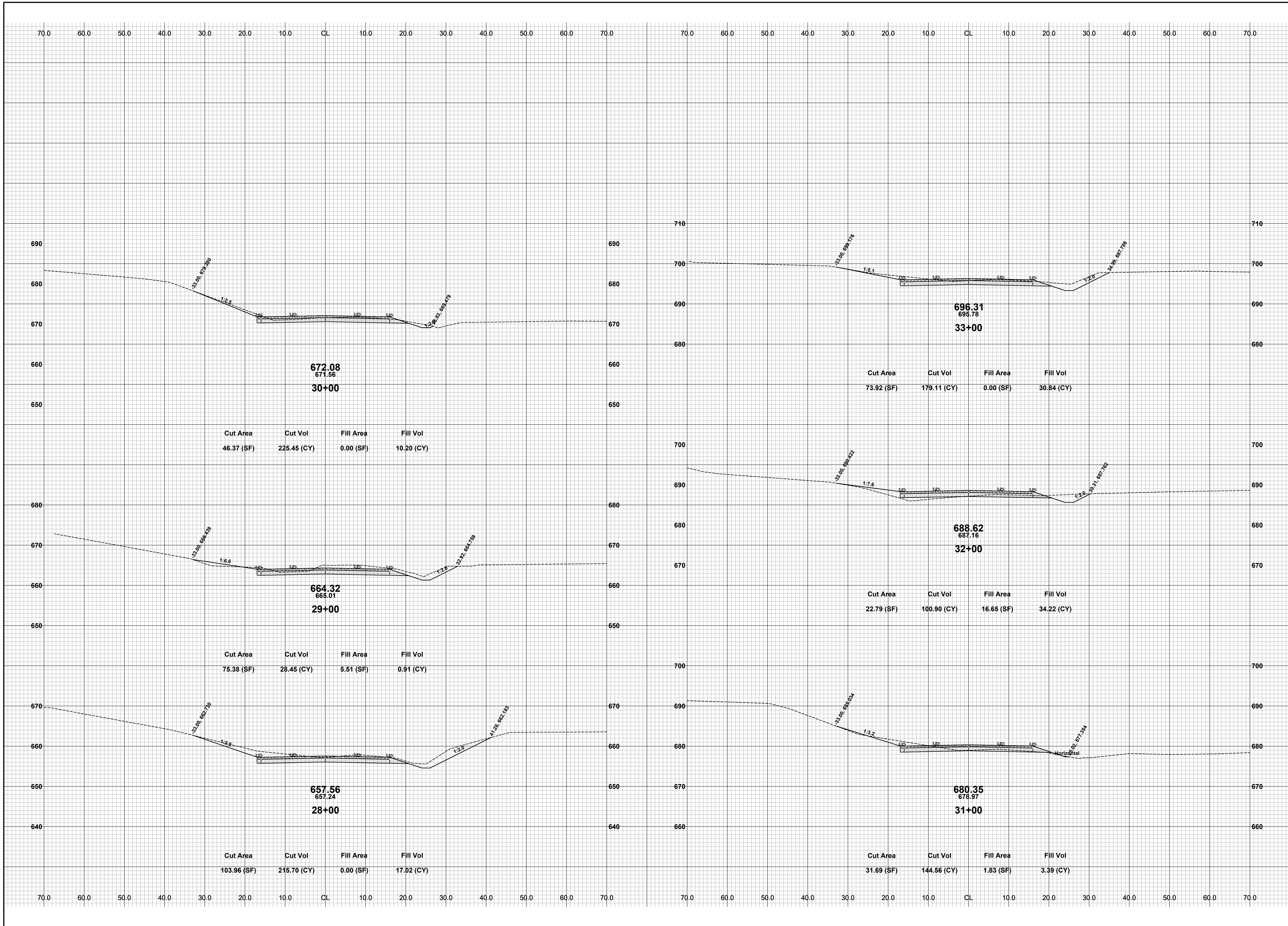
DRAWN BY:
REVIEWED BY: RPB
DATE: JANUARY 2023
SCALE: 1"= 10'



REVISIONS	
1	
2	
3	
4	
5	
6	
7	

34TH STREET RECONSTRUCTION PROJECT
SALEM TOWNSHIP - 140TH AVENUE 0.5 MILES NORTH
CROSS SECTIONS - STA. 20+00 TO STA. 27+00

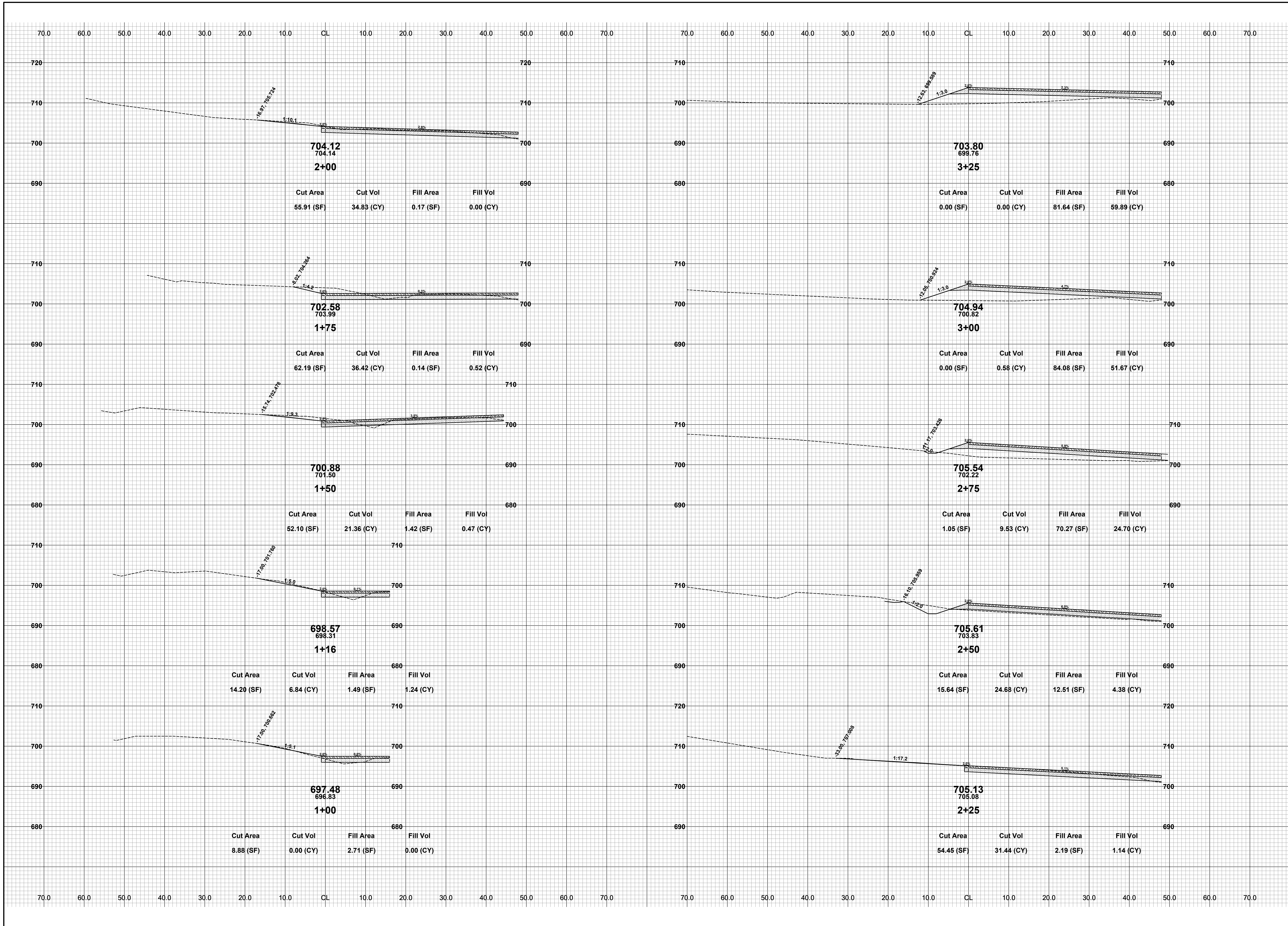
DRAWN BY:
REVIEWED BY: RPB
DATE: JANUARY 2023
SCALE: 1"= 10'



REVISIONS	
1	
2	
3	
4	
5	
6	
7	

34TH STREET RECONSTRUCTION PROJECT
 SALEM TOWNSHIP - 140TH AVENUE NORTH 0.5 MILES
 CROSS SECTIONS - STA. 28+00 TO STA. 33+00

DRAWN BY: ACW
 REVIEWED BY:
 DATE: MARCH 2023
 SCALE: 1" = 10'



REVISIONS	
1	
2	
3	
4	
5	
6	
7	

34TH STREET RECONSTRUCTION PROJECT
SALEM TOWNSHIP - 140TH AVENUE 0.5 MILES NORTH
CROSS SECTIONS - CUL-DE-SAC

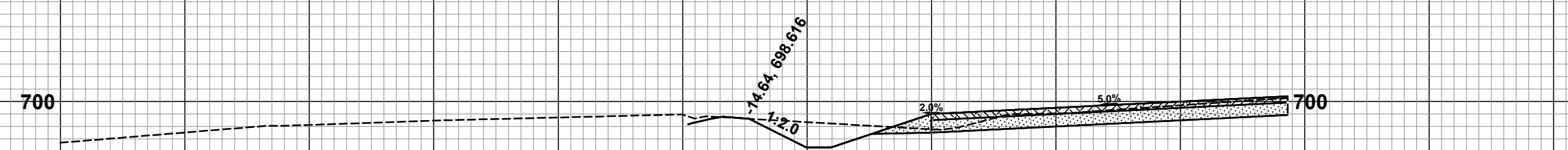
DRAWN BY: ACW
REVIEWED BY:
DATE: MARCH 2023
SCALE: 1"= 10'

70.0 60.0 50.0 40.0 30.0 20.0 10.0 CL 10.0 20.0 30.0 40.0 50.0 60.0 70.0 70.0 60.0 50.0 40.0 30.0 20.0 10.0 CL 10.0 20.0 30.0 40.0 50.0 60.0 70.0



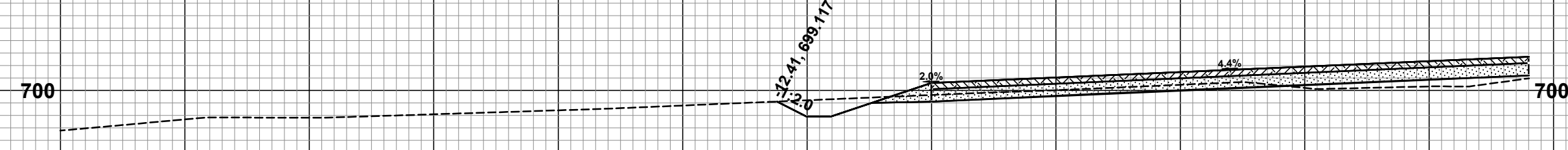
697.48
696.96
4+23.49

Cut Area	Cut Vol	Fill Area	Fill Vol
40.61 (SF)	42.82 (CY)	0.00 (SF)	0.01 (CY)



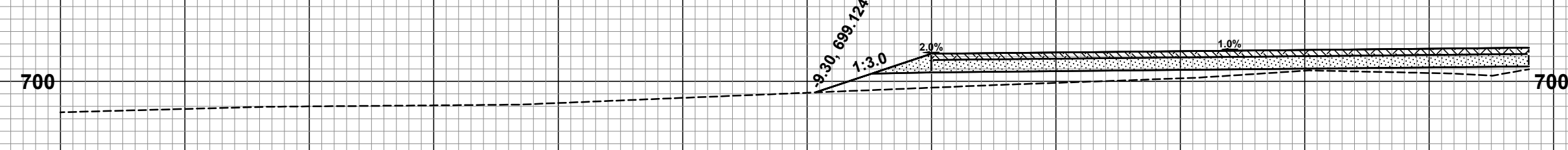
699.00
697.78
4+00

Cut Area	Cut Vol	Fill Area	Fill Vol
45.80 (SF)	32.83 (CY)	0.06 (SF)	5.38 (CY)



700.61
699.64
3+75

Cut Area	Cut Vol	Fill Area	Fill Vol
21.64 (SF)	9.13 (CY)	8.86 (SF)	13.85 (CY)



702.22
699.50
3+50

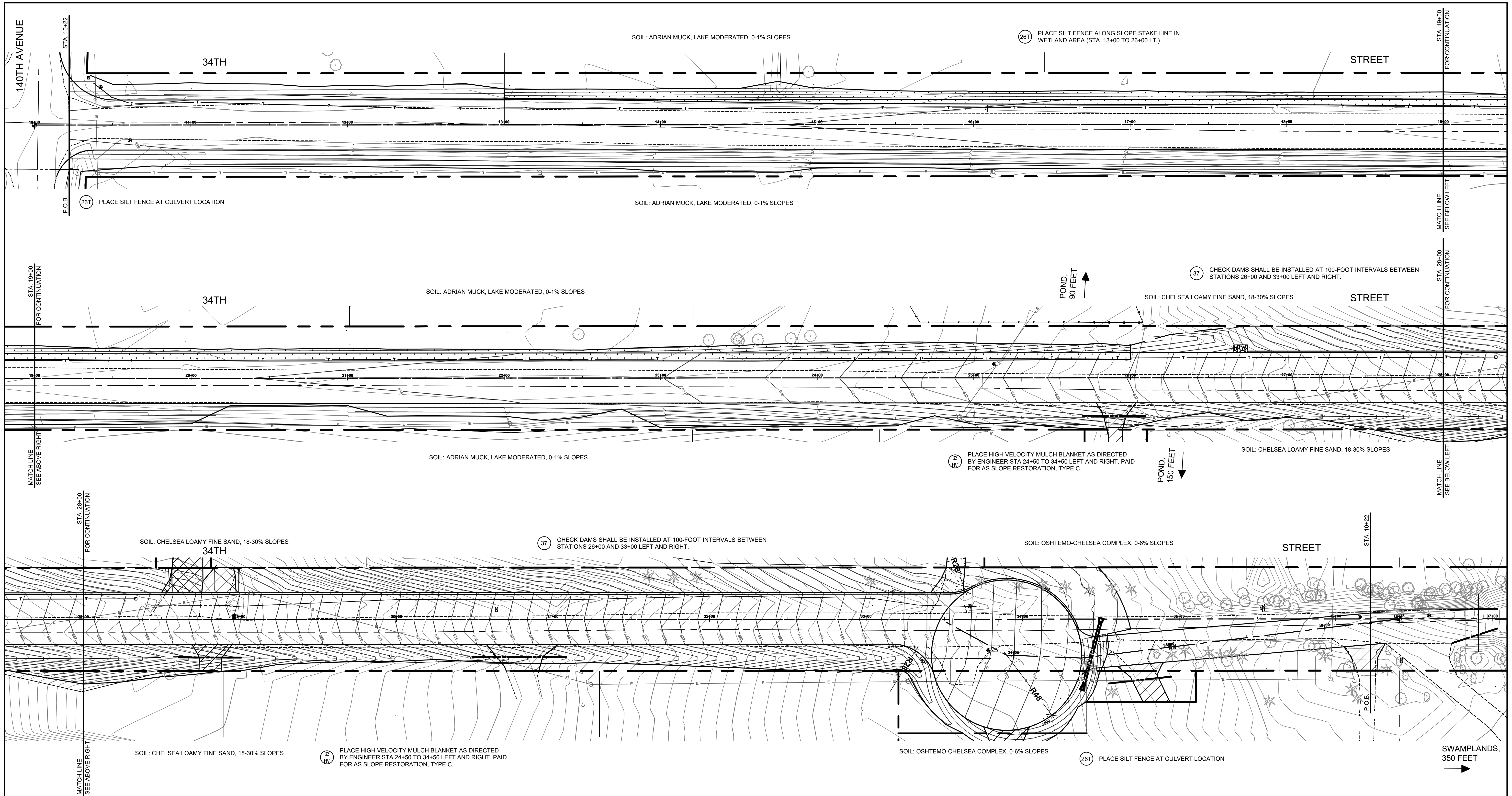
Cut Area	Cut Vol	Fill Area	Fill Vol
0.00 (SF)	0.00 (CY)	39.26 (SF)	42.77 (CY)

70.0 60.0 50.0 40.0 30.0 20.0 10.0 CL 10.0 20.0 30.0 40.0 50.0 60.0 70.0 70.0 60.0 50.0 40.0 30.0 20.0 10.0 CL 10.0 20.0 30.0 40.0 50.0 60.0 70.0

REVISIONS	
1	
2	
3	
4	
5	
6	
7	

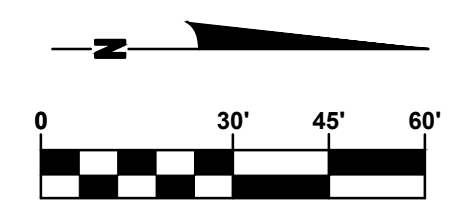
34TH STREET RECONSTRUCTION PROJECT
SALEM TOWNSHIP - 140TH AVENUE 0.5 MILES NORTH
CROSS SECTIONS - CUL-DE-SAC

DRAWN BY: ACW
REVIEWED BY:
DATE: MARCH 2023
SCALE: 1"= 10'



SOIL EROSION & SEDIMENTATION CONTROL NOTES

1. ALL CONSTRUCTION METHODS WILL BE DONE IN COMPLIANCE WITH THE MICHIGAN SOIL EROSION AND SEDIMENTATION CONTROL ACT. THE CONTRACTOR WILL BE RESPONSIBLE FOR OBTAINING A "SOIL EROSION PERMIT" FROM THE COUNTY AND/OR A "PERMIT BY RULE/NOTICE OF COVERAGE" FROM THE MDEQ PRIOR TO START OF CONSTRUCTION. THE CONTRACTOR WILL BE RESPONSIBLE FOR COMPLYING WITH ALL REQUIREMENTS OF THE COUNTY "SOIL EROSION PERMIT" AND FOR ALL CERTIFIED STORM WATER INSPECTION SERVICE REQUIRED BY THE "PERMIT BY RULE." EROSION CONTROL MEASURES SHOWN ON THE PLANS ARE THE MINIMUM REQUIREMENTS AND WILL NOT RELIEVE THE CONTRACTOR'S RESPONSIBILITY FOR PROVIDING ALL REQUIRED EROSION CONTROL MEASURES.
 2. AVOID UNNECESSARY DISTURBING OR REMOVING OF EXISTING VEGETATED TOPSOIL OR EARTH COVER. THESE COVER AREAS ACT AS SEDIMENT FILTERS.
 3. ALL TEMPORARY SOIL EROSION PROTECTION WILL REMAIN IN PLACE UNTIL REMOVAL IS REQUIRED FOR FINAL CLEAN UP AND APPROVAL.
 4. GEOTEXTILE SILT FENCE WILL BE INSTALLED AS REQUIRED WHEN CROSSING CREEKS OR WHEN ADJACENT TO WETLANDS OR SURFACE WATER BODIES TO PREVENT SILTATION AND ELSEWHERE AS DIRECTED BY THE ENGINEER. SEEDING AND/OR SODDING WILL BE INSTALLED ON CREEK BANKS IMMEDIATELY AFTER CONSTRUCTION TO PREVENT EROSION.
 5. MAINTENANCE, CLEANING, AND REMOVAL OF THE VARIOUS SEDIMENT CONTROL MEASURES WILL BE INCLUDED IN THE VARIOUS EROSION CONTROL ITEMS.
 6. SOIL TYPE LOCATIONS ARE APPROXIMATED FROM THE UNITED STATES DEPARTMENT OF AGRICULTURE'S WEB SOIL SURVEY MAPS. DETAILED PROPERTIES FOR EACH SOIL TYPE CAN BE FOUND ON THEIR WEBSITE: WEBSOILSURVEY.NRCS.USDA.GOV
 7. TEMPORARY EROSION CONTROL MEASURES WILL NOT BE MANDATORY IF STORMWATER IS DETERMINED TO BE TOPOGRAPHICALLY INCAPABLE OF LEAVING SITE.
 8. SLOPE STAKE LINES AS CALLED OUT IN THE PLAN SHEETS DEFINE THE EARTH CHANGE LIMITS FOR THIS PROJECT.
 9. ALLEGAN COUNTY ROAD COMMISSION ASSUMES RESPONSIBILITY FOR MAINTENANCE OF PERMANENT SOIL EROSION & SEDIMENTATION CONTROL MEASURES ONE YEAR AFTER FINAL PROJECT ACCEPTANCE AS DEFINED UNDER THE SOIL EROSION AND SEDIMENTATION CONTROL OPERATING PROCEDURES FOR THE ALLEGAN COUNTY ROAD COMMISSION.
- 41 NUMBER IN CIRCLE REFERS TO NUMBERED DETAILS ON MDOT STANDARD PLAN R-86 SERIES, SOIL EROSION & SEDIMENTATION CONTROL MEASURES. "P" DENOTES PERMANENT MEASURE AND "T" DENOTES TEMPORARY MEASURE. SOIL EROSION CONTROL PLANS DENOTE MINIMUM EROSION MEASURES REQUIRED AS DESCRIBED BELOW.
 - 39P ALL DISTURBED AREAS NOT PAVED OR GRAVELED SHALL BE RESTORED UNDER THE PAY ITEM SLOPE RESTORATION TYPE A. THIS PAY ITEM INCLUDES PLACING MDT SEEDING MIXTURE TUF APPLIED AT A RATE OF 220 LB/ACRE, FERTILIZER, CHEMICAL NUTRIENT, CL A APPLIED AT A RATE OF 176 LB/ACRE, MULCH AT A RATE OF 2 TON/ACRE AND MULCH ANCHORING.
 - 3T TEMPORARY SEEDING WILL BE PLACED AT LOCATIONS DETERMINED BY THE ENGINEER IN THE FIELD AND WILL INCLUDE SEEDING MIXTURE, CR APPLIED AT A RATE OF 70 LB/ACRE AND MULCH INCLUDED IN SLOPE RESTORATION TYPE A.
 - 4T DUST CONTROL MAY BE REQUIRED ON THE SUBGRADE CONSTRUCTION AND WILL INCLUDE APPLYING FRESH WATER TO BE INCLUDED IN THE ITEM OF STATION GRADING. DUST CONTROL ON THE AGGREGATE BASE COURSE WILL BE ACCOMPLISHED BY APPLYING FRESH WATER (INCLUDED IN THE ITEM OF AGGREGATE BASE, _ INCH) AS DIRECTED BY THE PROJECT ENGINEER.
 - 7P INSTALL RIPRAP, PLAIN OR RIPRAP, HEAVY AS DIRECTED BY THE ENGINEER IN THE FIELD. THE RIPRAP, PLAIN AND RIPRAP, HEAVY PAY ITEMS WILL INCLUDE A GEOTEXTILE UNDERLAYMENT.
 - 26T SILT FENCE WILL BE INSTALLED AT CREEK CROSSINGS, ADJACENT TO ALL WETLANDS AND SURFACE WATERS, AND OTHER LOCATIONS AS DIRECTED BY THE ENGINEER. EACH SILT FENCE WILL BE INSTALLED GENERALLY ALONG THE SAME CONTOUR ELEVATION.
 - 32 CONTRACTOR WILL PROVIDE DOZER TRACKING PERPENDICULAR TO THE SLOPE TO REDUCE WATER AND WIND EROSION. THIS WILL BE PERFORMED AT LOCATIONS SHOWN OR AS DIRECTED BY THE ENGINEER IN THE FIELD, TO BE INCLUDED IN THE ITEM OF EMBANKMENT.
 - 35V HIGH VELOCITY MULCH BLANKETS WILL BE USED ON STEEP BANKS. PROVIDE MULCH BLANKET, HIGH VELOCITY CENTERED ON ALL DITCH BOTTOMS WITH A LONGITUDINAL GRADE OF 2.00% OR GREATER AND AT OTHER LOCATIONS AS DIRECTED BY THE ENGINEER IN THE FIELD. PAID AS SLOPE RESTORATION TYPE C.
 - 37 CHECK DAMS WILL BE INSTALLED AT THE LOCATIONS SHOWN ON THE PLAN OR AS DIRECTED BY THE ENGINEER IN THE FIELD.



**Board of County Road Commissioners
Of Allegan County**
1308 LINCOLN ROAD
ALLEGAN, MICHIGAN 49010-9762
www.alleganroads.org
TELEPHONE (269) 673-2184 FAX (269) 673-5922

REVISIONS	
1	
2	
3	
4	
5	
6	
7	

34TH STREET RECONSTRUCTION PROJECT
SALEM TOWNSHIP - 140TH AVENUE NORTH 0.5 MILES
SESC PLAN - P.O.B. TO P.O.E.

DRAWN BY: ACW
REVIEWED BY:
DATE: MARCH 2023
SCALE: 1"= 40'H, 5V